



2007




Honors Transfer

Learning Community Outcomes Report

Prepared by:

Office of Planning, Research & Institutional Effectiveness



Section Contents



Term Enrollment by Course

Term Enrollment by Demographic

Overall Success and Retention

Success and Retention by Subject

Grade Distribution by Subject



Honors Transfer Program Enrollment by Course: 2003/04 to 2006/07
Unduplicated Headcount

<u>Term Desc</u>	<u>Crn</u>	<u>Subject</u>	<u>Section</u>	<u>Course Title</u>	<u>Counts</u>
Fall 2003	80772	SPAN	130AA	Intermediate Spanish - Honors	4
	83877	ENGL	100AH	Composition - HONORS	26
	84374	ENGL	110JH	Comp, Lit. & Crit. Think Honor	11
	84877	ENGL	165AH	Crit. Think & Adv. Com -Honors	23
	88767	HIST	101AH	History Western Civ II -Honors	24
	88784	PSYC	100AH	General Psychology - Honors	29
	89249	MATH	251AH	Calc./Analytic Geom. I-Honors	11
	89298	BIOL	675AH	Honors Colloq. in Biology	15
	89310	CRER	650AH	Honors Seminar	23
	89586	PHYS	210AH	General Physics I-Honors	15
	89587	PHYS	211JH	General Phys I Calc Sup-Honors	5
	89640	MATH	241AH	Applied Calculus I-Honors	4
	89694	PSYC	690AH	Special Projects - Honors	1
	Total				
Spring 2004	30296	ENGL	100AH	Composition - Honors	28
	30316	ENGL	110AH	Comp, Lit, Critical - Honors	19
	30685	PHIL	100JH	Intro to Philosophy - HONORS	21
	30760	SPAN	110AH	Elementary Spanish -Honors	24
	35380	MATH	251AH	Calc/Anal. Geom - Honors	1
	36562	SPCH	150AH	Communicate Across Cltrs-Honor	21
	37695	MUS.	202AH	Music Appreciation- Honors	20
	38083	PSYC	300AH	Social Psychology - hONORS	25
	38700	HIST	240AH	Ethnic Groups in CA - Honors	24
	38736	BIOL	675AH	Honors Colloq. in Biology	18
	38783	CRER	650AH	Honors Seminar	13
	38836	GEOL	210AH	General Geology - Honors	4
	39196	MATH	242AH	Applied Calculus II - Honors	9
	39363	PHYS	220AH	General Physics II - Honors	6
Total					233
Fall 2004	80765	SPAN	110AH	Elementary Spanish -Honors	13
	83877	ENGL	100AH	Composition - HONORS	21
	84877	ENGL	165AH	Crit. Think & Adv. Com -Honors	16
	89249	MATH	251AH	Calc./Analytic Geom. I-Honors	20
	89298	BIOL	675AH	Honors Colloq. in Biology	20
	89310	CRER	650AH	Honors Seminar	17
	89866	SPCH	100AH	Fundamentals of Speech-Honors	27
	89867	ART	102AH	History of Art II - Honors	15
	89879	MATH	200AH	Probability&Statistics-Honors	6
	89882	PHYS	270AH	Physics with Calc. III-Honors	7
	89884	ECON	100AH	Macro Economics - Honors	27
	89887	ANTH	110AH	Cultural Anthropology - Honors	26
	89902	HIST	201JH	United States History I-HONORS	26
	Total				

Honors Transfer Program Enrollment by Course: 2003/04 to 2006/07
Unduplicated Headcount

<u>Term Desc</u>	<u>Crn</u>	<u>Subject</u>	<u>Section</u>	<u>Course Title</u>	<u>Counts</u>
Spring 2005	30296	ENGL	100AH	Composition - Honors	19
	30316	ENGL	110AH	Comp, Lit, Critical - Honors	23
	30708	PSYC	100AH	General Psychology - Honors	21
	30760	SPAN	120AH	Elementary Spanish -Honors	10
	35380	MATH	251AH	Calc/Anal. Geom - Honors	12
	37695	MUS.	202AH	Music Appreciation- Honors	15
	38700	HIST	240AH	Ethnic Groups in CA - Honors	22
	38736	BIOL	675AH	Honors Colloq. in Biology	21
	38836	GEOL	210AH	General Geology - Honors	5
	39196	MATH	242AH	Applied Calculus II - Honors	8
	39363	PHYS	220AH	General Physics II - Honors	5
	39585	MATH	200AH	Elem Probability&Stats-Honors	9
	39587	PHYS	221AH	Gen Phys II Calc Suplm-Honors	3
	39717	ENGL	100JH	Composition - Honors	7
		Total			
Fall 2005	80028	ART	105AH	Art of Asia/ Near East-Honors	28
	80765	SPAN	110AH	Elementary Spanish -Honors	2
	83877	ENGL	100AH	Composition - HONORS	28
	84324	HIST	240JH	Hist-Ethnic Groups of CA-Hon	25
	84877	ENGL	165AH	Crit. Think & Adv. Com -Honors	10
	88767	HIST	101AH	History Western Civ II -Honors	12
	88786	PHIL	100AH	Intro to Philosophy-Honors	22
	89112	ENGL	100JH	Composition - Honors	14
	89249	MATH	251AH	Calc./Analytic Geom. I-Honors	16
	89298	BIOL	675AH	Honors Colloq. in Biology	16
	89310	CRER	650AH	Honors Seminar	15
	89577	ANTH	125AH	Physical Anthropology - Honors	15
	89879	MATH	200AH	Probability&Statistics-Honors	11
	89882	PHYS	270AH	Physics with Calc. III-Honors	7
	89884	ECON	100AH	Macro Economics - Honors	23
	90081	GEOL	210AH	General Geology - Honors	6
	90082	SPCH	127AH	Argumentation Honors	21
	90085	MATH	252AH	Calculus/Analy Geom II-Honors	9
	90142	PHIL	680AH	Intro-ScientificReason.-Honors	5
	90154	ENGL	680AH	Honors Topic in Literature	1
90158	PHIL	680BH	Greek Myth,Fable&Legend-Honors	14	
	Total				300
Spring 2006	30296	ENGL	100AH	Composition - Honors	19
	30316	ENGL	110AH	Comp, Lit, Critical - Honors	21
	30760	SPAN	120AH	Elementary Spanish -Honors	8
	35380	MATH	251AH	Calc/Anal. Geom - Honors	1
	35545	PHIL	300AH	Intro to World Religions-Honor	26
	37695	MUS.	202AH	Music Appreciation- Honors	9
	38736	BIOL	675AH	Honors Colloq. in Biology	11

**Honors Transfer Program Enrollment by Course: 2003/04 to 2006/07
Unduplicated Headcount**

<u>Term Desc</u>	<u>Crn</u>	<u>Subject</u>	<u>Section</u>	<u>Course Title</u>	<u>Counts</u>
	38836	GEOL	210AH	General Geology - Honors	9
	39196	MATH	242AH	Applied Calculus II - Honors	6
	39585	MATH	200AH	Elem Probability&Stats-Honors	5
	39933	SPCH	100AH	Fundamentals of Speech - Honor	12
	39967	ENGL	110JH	Comp, Lit, Crit Think - Honor	4
	40030	CHEM	220AH	General Chemistry II - Honors	6
	40032	PSYC	200AH	Developmental Psychology-Honor	22
	40049	HIST	201JH	United States History I-Honors	23
	40050	PHIL	320JH	Asian Philosophy-Honors	11
	40074	ANTH	110AH	Cultural Anthropology-Honors	14
	40136	MATH	252AH	Calc/Analytic Geom II - Honors	7
	Total				214
Fall 2006	80029	ART	115AH	Art, Music and Ideas-Honors	31
	80600	MUS.	115AH	Music, Art and Ideas-Honors	13
	80765	SPAN	110AH	Elementary Spanish -Honors	12
	83877	ENGL	100AH	Composition - HONORS	23
	88767	HIST	101AH	History Western Civ II -Honors	15
	88786	PHIL	100AH	Intro to Philosophy-Honors	24
	89112	ENGL	100JH	Composition - Honors	18
	89125	ENGL	110AH	Comp, Lit. & Crit. Think/Honor	18
	89249	MATH	251AH	Calc./Analytic Geom. I-Honors	7
	89577	ANTH	125AH	Physical Anthropology - Honors	6
	89879	MATH	200AH	Probability&Statistics-Honors	6
	89882	PHYS	270AH	Physics with Calc. III-Honors	7
	89884	ECON	100AH	Macro Economics - Honors	28
	90081	GEOL	210AH	General Geology - Honors	2
	90082	SPCH	127AH	Argumentation Honors	16
	90085	MATH	252AH	Calculus/Analy Geom II-Honors	9
	90154	ENGL	680AH	Honors Topic in Literature	2
	90476	HIST	201AH	United States History I-Honors	17
	90557	MATH	241AH	Applied Calculus I - Honors	4
	90603	PSYC	268AH	Black Psychology-Honors	11
	90753	ENGL	690AV	Special Projects - Honors	1
	Total				270
Spring 2007	30296	ENGL	100AH	Composition - Honors	16
	30316	ENGL	110AH	Comp, Lit, Critical - Honors	18
	30760	SPAN	120AH	Elementary Spanish -Honors	15
	34142	SPCH	150AH	Intercultural Comm -Honors	19
	35380	MATH	251AH	Calc/Anal. Geom - Honors	13
	37642	HIST	100AH	Western Civ I -Honors	17
	38836	GEOL	210AH	General Geology - Honors	4
	39196	MATH	242AH	Applied Calculus II - Honors	3
	39585	MATH	200AH	Elem Probability&Stats-Honors	5
	39967	ENGL	110JH	Comp, Lit, Crit Think - Honor	3

**Honors Transfer Program Enrollment by Course: 2003/04 to 2006/07
Unduplicated Headcount**

<u>Term Desc</u>	<u>Crn</u>	<u>Subject</u>	<u>Section</u>	<u>Course Title</u>	<u>Counts</u>
	40074	ANTH	110AH	Cultural Anthropology-Honors	16
	40136	MATH	252AH	Calc/Analytic Geom II - Honors	8
	40603	HIST	240AH	Hist-Ethnic Groups inCA-Honors	16
	40650	PLSC	210AH	American Politics-Honors	12
	40653	PHIL	240AH	Introduction to Ethics-Honors	16
	40800	MUS.	250AH	World Music - Honors	20
	Total				201
Fall 2007	80029	ART	115AH	Art, Music and Ideas-Honors	28
	80600	MUS.	115AH	Music, Art and Ideas-Honors	7
	80765	SPAN	110AH	Elementary Spanish -Honors	11
	83877	ENGL	100AH	Composition - Honors	20
	89112	ENGL	100JH	Composition - Honors	11
	89125	ENGL	110AH	Comp, Lit. & Crit. Think/Honor	16
	89182	SPCH	100AH	Public Speaking - Honors	6
	89249	MATH	251AH	Calc./Analytic Geom. I-Honors	17
	89298	BIOL	675AH	Honors Colloq. in Biology	7
	89310	CRER	650AH	Honors Seminar	20
	89879	MATH	200AH	Probability&Statistics-Honors	9
	89882	PHYS	270AH	Physics with Calc. III-Honors	7
	89884	ECON	100AH	Macro Economics - Honors	19
	90081	GEOL	210AH	General Geology - Honors	3
	90085	MATH	252AH	Calculus/Analy Geom II-Honors	14
	90557	MATH	241AH	Applied Calculus I - Honors	5
	90603	PSYC	268AH	Black Psychology-Honors	3
	91048	SPAN	120AH	Advanced Elem. Spanish - Honor	9
	91052	SPAN	130AH	Intermediate Spanish - Honors	11
	91060	LIT.	111JH	The Short Story - Honors	20
	91211	ANTH	110AH	Cultural Anthropology-Honors	25
	91225	PSYC	300AH	Social Psychology-Honors	20
	Total				288

**Honors Transfer Program Demographics
Fall 2003 to Fall 2007**

Gender	Fall 2003		Fall 2004		Fall 2005		Fall 2006		Fall 2007		Total FA03-FA07 and % Change FA06-FA07	
	Count	%	Count	%	Count	%	Count	%	Count	%	Count	%
Female	81	58%	85	46%	115	53%	92	44%	102	46%	475	11%
Male	59	42%	97	53%	98	45%	111	53%	114	52%	479	3%
Unreported			1	1%	5	2%	7	3%	5	2%	18	-29%
Total	140	100%	183	100%	218	100%	210	100%	221	100%	972	5%

Age	Fall 2003		Fall 2004		Fall 2005		Fall 2006		Fall 2007		Total FA03-FA07 and % Change FA06-FA07	
	Count	%	Count	%	Count	%	Count	%	Count	%	Count	%
Under 18	2	1%	5	3%	4	2%	11	5%	6	3%	28	-45%
Age 18-22	92	66%	127	69%	153	70%	163	78%	159	72%	694	-2%
Age 23-28	25	18%	27	15%	40	18%	17	8%	33	15%	142	94%
Age 29-39	15	11%	17	9%	14	6%	13	6%	15	7%	74	15%
Age 40-49	2	1%	4	2%	4	2%	3	1%	3	1%	16	0%
Age 60+			1	1%	1	0%	2	1%	1	0%	5	-50%
Age 50-59	4	3%	2	1%	2	1%	1	0%	4	2%	13	300%
Total	140	100%	183	100%	218	100%	210	100%	221	100%	972	5%

Ethnicity	Fall 2003		Fall 2004		Fall 2005		Fall 2006		Fall 2007		Total FA03-FA07 and % Change FA06-FA07	
	Count	%	Count	%	Count	%	Count	%	Count	%	Count	%
African American	2	1%	6	3%	5	2%	14	7%	13	6%	40	-7%
Asian	45	32%	55	30%	53	24%	65	31%	63	29%	281	-3%
Filipino	20	14%	24	13%	35	16%	31	15%	31	14%	141	0%
Hispanic	23	16%	38	21%	35	16%	34	16%	36	16%	166	6%
White	40	29%	50	27%	59	27%	43	20%	50	23%	242	16%
Native American					2	1%					2	
Other	4	3%	2	1%	10	5%	3	1%	7	3%	26	133%
Unknown	6	4%	8	4%	19	9%	20	10%	21	10%	74	5%
Total	140	100%	183	100%	218	100%	210	100%	221	100%	972	5%

Enrollment Status	Fall 2003		Fall 2004		Fall 2005		Fall 2006		Fall 2007		Total FA03- FA07 and % Change FA06 FA07	
	Count	%	Count	%	Count	%	Count	%	Count	%	Count	%
Continuing	97	69%	122	67%	146	67%	119	57%	138	62%	622	16%
Current K-12			1	1%	1	0%	2	1%	1	0%	5	-50%
First-Time	18	13%	33	18%	38	17%	66	31%	41	19%	196	-38%
First-Time Transfer	10	7%	16	9%	15	7%	11	5%	15	7%	67	36%
Returning	12	9%	9	5%	13	6%	8	4%	18	8%	60	125%
Returning Transfer	3	2%	2	1%	5	2%	4	2%	8	4%	22	100%
Total	140	100%	183	100%	218	100%	210	100%	221	100%	972	5%

Educational Goal	Fall 2003		Fall 2004		Fall 2005		Fall 2006		Fall 2007		Total FA03-FA07 and % Change FA06-FA07	
	Count	%	Count	%	Count	%	Count	%	Count	%	Count	%
AA/AS & Transfer	80	57%	118	64%	139	64%	130	62%	100	57%	567	-23%
AA/AS w/o Transfer	3	2%	3	2%	9	4%	4	2%	2	1%	21	-50%
Acquire Job Skills							3	1%	3	2%	6	0%
Certificate w/o Transfer					1	0%	1	0%	1	1%	3	0%
Transfer w/o AA/AS	39	28%	45	25%	44	20%	64	30%	54	31%	246	-16%
Educational Development	2	1%	9	5%	7	3%	3	1%	3	2%	24	0%
Improve Basic Skills									1	1%	1	
Undecided	16	11%	8	4%	18	8%	5	2%	12	7%	59	140%
Total	140	100%	183	100%	218	100%	210	100%	176	100%	927	-16%

Honors Transfer Program Demographics Spring 2004 to Spring 2007

Gender	Spring 2004		Spring 2005		Spring 2006		Spring 2007		Total SP04-SP07 and % Change SP06-SP07	
	Count	%	Count	%	Count	%	Count	%	Count	%
Female	107	55%	83	55%	107	58%	96	57%	393	-10%
Male	85	44%	65	43%	76	41%	70	41%	296	-8%
Unreported	1	1%	2	1%	2	1%	3	2%	8	50%
Total	193	100%	150	100%	185	100%	169	100%	697	-9%

Age	Spring 2004		Spring 2005		Spring 2006		Spring 2007		Total SP04-SP07 and % Change SP06-SP07	
	Count	%	Count	%	Count	%	Count	%	Count	%
Under 18	3	2%	3	2%	5	3%	2	1%	13	-60%
Age 18-22	130	67%	109	73%	126	68%	136	80%	501	8%
Age 23-28	34	18%	22	15%	29	16%	17	10%	102	-41%
Age 29-39	12	6%	10	7%	14	8%	8	5%	44	-43%
Age 40-49	10	5%	4	3%	6	3%	2	1%	22	-67%
Age 60+			1	1%	1	1%	2	1%	4	100%
Age 50-59	4	2%	1	1%	4	2%	2	1%	11	-50%
Total	193	100%	150	100%	185	100%	169	100%	697	-9%

Ethnicity	Spring 2004		Spring 2005		Spring 2006		Spring 2007		Total SP04-SP07 and % Change SP06-SP07	
	Count	%	Count	%	Count	%	Count	%	Count	%
African American	6	3%	4	3%	8	4%	7	4%	25	-13%
Asian	49	25%	44	29%	54	29%	43	25%	190	-20%
Filipino	31	16%	18	12%	24	13%	27	16%	100	13%
Hispanic	40	21%	34	23%	27	15%	35	21%	136	30%
White	54	28%	34	23%	48	26%	42	25%	178	-13%
Native American					1	1%	2	1%	3	100%
Other	8	4%	7	5%	10	5%	2	1%	27	-80%
Unknown	5	3%	9	6%	13	7%	11	7%	38	-15%
Total	193	100%	150	100%	185	100%	169	100%	697	-9%

Enrollment Status	Spring 2004		Spring 2005		Spring 2006		Spring 2007		Total SP04-SP07 and % Change SP06-SP07	
	Count	%	Count	%	Count	%	Count	%	Count	%
Continuing	163	84%	130	87%	155	84%	148	88%	596	-5%
Current K-12	1	1%	1	1%	3	2%			5	-100%
First-Time	12	6%	7	5%	4	2%	2	1%	25	-50%
First-Time Transfer	5	3%	6	4%	8	4%	9	5%	28	12%
Returning	11	6%	5	3%	9	5%	5	3%	30	-44%
Returning Transfer	1	1%	1	1%	6	3%	5	3%	13	-17%
Total	193	100%	150	100%	185	100%	169	100%	697	-9%

Educational Goal	Spring 2004		Spring 2005		Spring 2006		Spring 2007		Total SP04-SP07 and % Change SP06-SP07	
	Count	%	Count	%	Count	%	Count	%	Count	%
AA/AS & Transfer	115	60%	95	63%	121	65%	120	71%	451	-1%
AA/AS w/o Transfer	9	5%	4	3%	5	3%			18	-100%
Certificate w/o Transfer	1	1%			1	1%			2	-100%
Transfer w/o AA/AS	48	25%	37	25%	42	23%	36	21%	163	-14%
Acquire Job Skills	1	1%			1	1%	2	1%	4	100%
Complete HS Credits					1	1%			1	-100%
Educational Development	4	2%	4	3%	4	2%	1	1%	13	-75%
Update Job Skills	1	1%			1	1%			2	-100%
Undecided	14	7%	10	7%	9	5%	10	6%	43	11%
Total	193	100%	150	100%	185	100%	169	100%	697	-9%

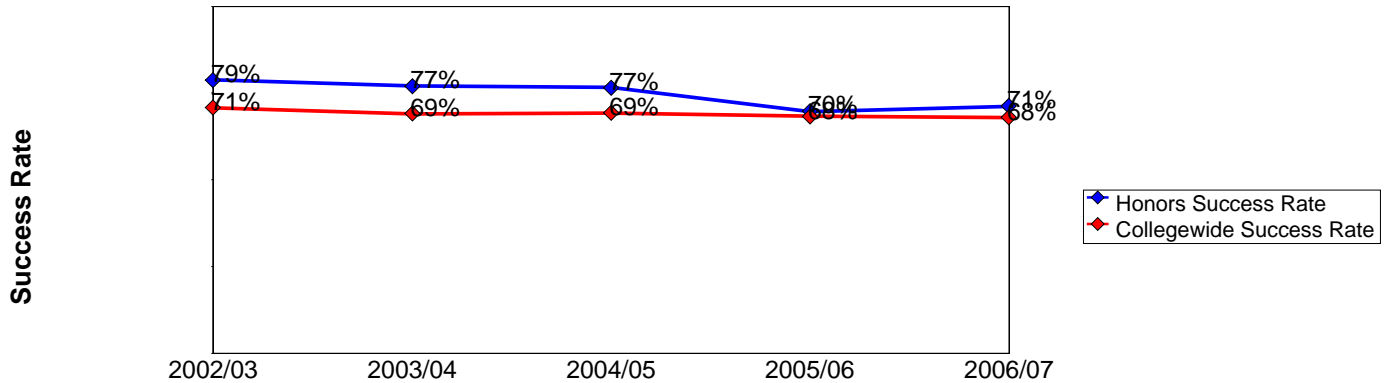
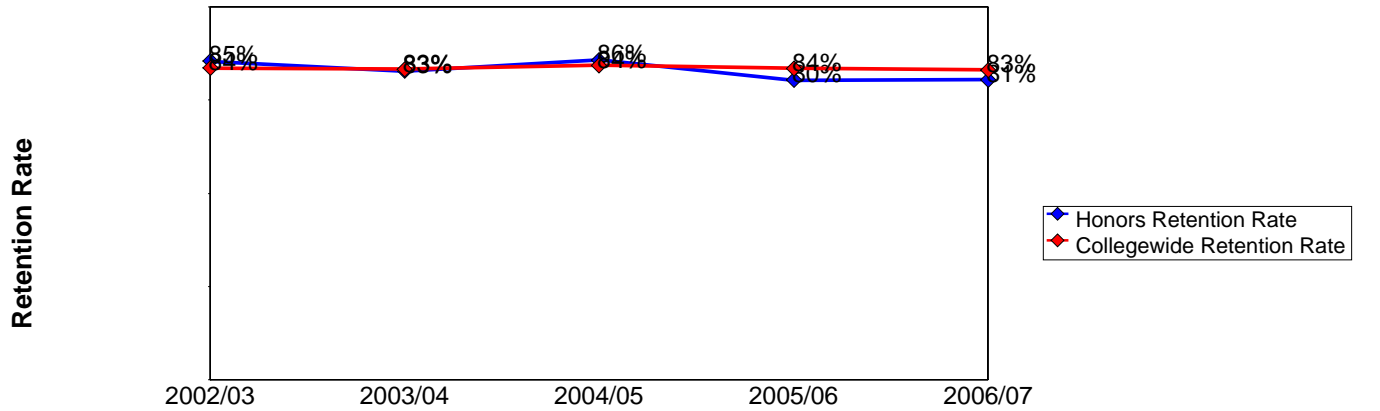
Source: SMCCD Data Warehouse

Note: Counts exclude honors students enrolled in non-honors-specific courses.

Office of Planning, Research & Institutional Effectiveness

Honors Overall Success and Retention 2002/03 to 2006/07

	Head Count	Retention Count	Retention Rate	Success Count	Success Rate
2002/03	384	328	85%	302	79%
2003/04	443	367	83%	341	77%
2004/05	444	381	86%	340	77%
2005/06	524	421	80%	365	70%
2006/07	477	384	81%	340	71%



Retention Count: Number of students with A,B,C,D,F,CR,NC, I grades.

Retention Rate: The percentage of students who complete a course with a grade of A,B,C,D,F,CR,NC, I out of total enrollments.

Success Count: Number of students with A,B,C,CR grades.

Success Rate: The percentage of students who complete a course with a grade of A,B,C,CR out of total enrollments.

**Honors Success and Retention by Subject
2002/03 to 2006/07**

Anthropology

	Head Count	Retention Count	Retention Rate	Success Count	Success Rate
2002/03	2	2	100%	2	100%
2003/04	1	1	100%	1	100%
2004/05	26	24	92%	19	73%
2005/06	29	21	72%	17	59%
2006/07	24	21	88%	17	71%

Art

	Head Count	Retention Count	Retention Rate	Success Count	Success Rate
2002/03	30	27	90%	25	83%
2004/05	16	14	88%	13	81%
2005/06	29	21	72%	18	62%
2006/07	34	32	94%	30	88%

Biology

	Head Count	Retention Count	Retention Rate	Success Count	Success Rate
2002/03	65	60	92%	58	89%
2003/04	60	60	100%	59	98%
2004/05	69	67	97%	66	96%
2005/06	47	43	91%	43	91%

Business

	Head Count	Retention Count	Retention Rate	Success Count	Success Rate
2002/03	3	3	100%	3	100%
2005/06	1	1	100%	1	100%

Chemistry

	Head Count	Retention Count	Retention Rate	Success Count	Success Rate
2003/04	1	1	100%	1	100%
2005/06	6	6	100%	6	100%

Career and Personal Development

	Head Count	Retention Count	Retention Rate	Success Count	Success Rate
2002/03	11	11	100%	11	100%
2003/04	34	31	91%	29	85%
2004/05	16	16	100%	16	100%
2005/06	13	13	100%	13	100%

Source: SMCCD Data Warehouse

Retention Count: Number of students with A,B,C,D,F,CR,NC, I grades.

Retention Rate: The percentage of students who complete a course with a grade of A,B,C,D,F,CR,NC, I out of total enrollments.

Success Count: Number of students with A,B,C,CR grades.

Success Rate: The percentage of students who complete a course with a grade of A,B,C,CR out of total enrollments.

**Honors Success and Retention by Subject
2002/03 to 2006/07**

Early Childhood Education

	Head Count	Retention Count	Retention Rate	Success Count	Success Rate
2006/07	1	1	100%	1	100%

Economics

	Head Count	Retention Count	Retention Rate	Success Count	Success Rate
2003/04	1	1	100%	1	100%
2004/05	27	26	96%	22	81%
2005/06	21	17	81%	15	71%
2006/07	29	21	72%	19	66%

English

	Head Count	Retention Count	Retention Rate	Success Count	Success Rate
2002/03	108	84	78%	77	71%
2003/04	105	75	71%	66	63%
2004/05	84	70	83%	59	70%
2005/06	91	69	76%	58	64%
2006/07	95	74	78%	64	67%

Geology

	Head Count	Retention Count	Retention Rate	Success Count	Success Rate
2002/03	8	8	100%	8	100%
2003/04	4	4	100%	4	100%
2004/05	5	5	100%	5	100%
2005/06	15	15	100%	12	80%
2006/07	6	6	100%	6	100%

History

	Head Count	Retention Count	Retention Rate	Success Count	Success Rate
2002/03	47	40	85%	30	64%
2003/04	51	40	78%	38	75%
2004/05	52	39	75%	33	63%
2005/06	57	47	82%	43	75%
2006/07	66	55	83%	47	71%

Math

	Head Count	Retention Count	Retention Rate	Success Count	Success Rate
2002/03	5	4	80%	4	80%
2003/04	18	14	78%	13	72%
2004/05	46	36	78%	29	63%
2005/06	58	39	67%	34	59%
2006/07	58	40	69%	35	60%

Source: SMCCD Data Warehouse

Retention Count: Number of students with A,B,C,D,F,CR,NC, I grades.

Retention Rate: The percentage of students who complete a course with a grade of A,B,C,D,F,CR,NC, I out of total enrollments

Success Count: Number of students with A,B,C,CR grades.

Success Rate: The percentage of students who complete a course with a grade of A,B,C,CR out of total enrollments.

**Honors Success and Retention by Subject
2002/03 to 2006/07**

Music

	Head Count	Retention Count	Retention Rate	Success Count	Success Rate
2002/03	1	1	100%	1	100%
2003/04	21	17	81%	15	71%
2004/05	15	10	67%	7	47%
2005/06	10	9	90%	7	70%
2006/07	33	26	79%	23	70%

Philosophy

	Head Count	Retention Count	Retention Rate	Success Count	Success Rate
2002/03	29	26	90%	23	79%
2003/04	19	16	84%	11	58%
2004/05	1	1	100%	1	100%
2005/06	72	59	82%	50	69%
2006/07	43	31	72%	29	67%

Political Science

	Head Count	Retention Count	Retention Rate	Success Count	Success Rate
2006/07	12	12	100%	10	83%

Physics

	Head Count	Retention Count	Retention Rate	Success Count	Success Rate
2002/03	15	14	93%	14	93%
2003/04	22	20	91%	20	91%
2004/05	15	14	93%	14	93%
2005/06	7	6	86%	6	86%
2006/07	7	7	100%	7	100%

Psychology

	Head Count	Retention Count	Retention Rate	Success Count	Success Rate
2002/03	31	23	74%	21	68%
2003/04	54	47	87%	45	83%
2004/05	21	16	76%	15	71%
2005/06	23	19	83%	17	74%
2006/07	11	9	82%	5	45%

Source: SMCCD Data Warehouse

Retention Count: Number of students with A,B,C,D,F,CR,NC, I grades.

Retention Rate: The percentage of students who complete a course with a grade of A,B,C,D,F,CR,NC, I out of total enrollments.

Success Count: Number of students with A,B,C,CR grades.

Success Rate: The percentage of students who complete a course with a grade of A,B,C,CR out of total enrollments.

**Honors Success and Retention by Subject
2002/03 to 2006/07**

Sociology

	Head Count	Retention Count	Retention Rate	Success Count	Success Rate
2005/06	1	1	100%	1	100%

Social Science

	Head Count	Retention Count	Retention Rate	Success Count	Success Rate
2002/03	1	1	100%	1	100%

Spanish

	Head Count	Retention Count	Retention Rate	Success Count	Success Rate
2002/03	11	10	91%	10	91%
2003/04	30	21	70%	21	70%
2004/05	24	22	92%	22	92%
2005/06	10	8	80%	8	80%
2006/07	25	23	92%	22	88%

Speech

	Head Count	Retention Count	Retention Rate	Success Count	Success Rate
2002/03	17	14	82%	14	82%
2003/04	22	19	86%	17	77%
2004/05	27	21	78%	19	70%
2005/06	34	27	79%	16	47%
2006/07	33	26	79%	25	76%

Source: SMCCD Data Warehouse

Retention Count: Number of students with A,B,C,D,F,CR,NC, I grades.

Retention Rate: The percentage of students who complete a course with a grade of A,B,C,D,F,CR,NC, I out of total enrollments.

Success Count: Number of students with A,B,C,CR grades.

Success Rate: The percentage of students who complete a course with a grade of A,B,C,CR out of total enrollments.

**Honors Grades by Subject
2002/03 to 2006/07**

Anthropology

		A		B		C		D		F		W	
30023	2006/07	1	3%										
36011	2002/03	2	6%										
40074	2005/06	5	14%	3	17%	1	50%			1	9%	4	31%
	2006/07	5	14%	6	33%					3	27%	2	15%
40075	2005/06	1	3%										
	2006/07	1	3%										
89577	2002/03	1	3%										
	2005/06	6	17%	1	6%			1	50%	2	18%	4	31%
	2006/07	3	8%			1	50%			1	9%	1	8%
89887	2004/05	11	31%	8	44%			1	50%	4	36%	2	15%

Art

		A		B		C		D		F		I		W	
30025	2002/03	1	2%												
	2004/05	1	2%												
30026	2004/05	1	2%												
36803	2006/07	1	2%												
38720	2002/03	19	31%	4	25%	1	11%			2	50%			3	20%
40076	2006/03	1	2%												
40718	2006/07	2	3%												
80028	2005/06	6	10%	6	38%	5	56%	2	67%	1	25%			8	53%
80029	2006/07	23	38%	2	13%	2	22%			1	25%	1	100%	2	13%
89867	2004/05	6	10%	4	25%	1	11%	1	33%					2	13%

Biology

		A		B		C		F		W	
30140	2002/03	1	1%								
	2003/04	1	1%								
30142	2003/04			3	7%						
	2004/05			1	2%						
	2006/07	1	1%								
30143	2002/03	1	1%	1	2%						
	2003/04	1	1%								
	2004/05	1	1%								
30144	2006/07	1	1%								
30146	2002/03					1	8%				
	2003/04	1	1%								
30147	2002/03			1	2%						
30149	2003/04	1	1%								
30150	2004/05	2	1%	1	2%						
30151	2002/03	1	1%	3	7%						
	2003/04	4	2%	1	2%						
	2004/05	1	1%	1	2%						
	2006/07	2	1%	1	2%						

Biology

		A		B		C		F		W	
84828	2004/05	1	1%								
88900	2003/04	1	1%								
89298	2002/03	14	8%					1	25%	4	36%
	2003/04	13	8%	2	5%						
	2004/05	14	8%	4	9%					1	9%
	2005/06	12	7%							3	27%
89578	2005/06	1	1%								

Business

A

30161	2002/03	3	75%
80192	2005/06	1	25%

Chemistry

A B C

40030	2005/06	3	75%	2	100%	1	100%
80197	2002/03	1	25%				

Career and Personal Development

A B C D F CR W

38783	2003/04	8	15%	1	25%	1	33%			1	100%	1	14%	1	33%
89310	2002/03	9	16%	1	25%					1	14%				
	2003/04	16	29%			2	67%	1	100%					2	67%
	2004/05	9	16%	2	50%					5	71%				
	2005/06	13	24%												

Early Childhood Education

A

36436	200703	1	100%
-------	--------	---	------

Economy

A B C D F W

30285	2006/07	1	7%										
30286	2003/04			1	4%								
	2004/05			1	4%								
36554	2004/05	1	7%										
89884	2004/05	3	20%	9	38%	8	44%	3	50%	1	50%	1	8%
	2005/06	7	47%	4	17%	4	22%	1	17%	1	50%	4	31%
	2006/07	3	20%	9	38%	6	33%	2	33%			8	62%

English

A C D F CR I W

30296	2002/03	1	1%	7	13%	4	19%	1	4%				2	2%
	2003/04	5	4%	3	6%	1	5%						9	8%
	2004/05	5	4%	2	4%	1	5%						7	6%
	2005/06	6	4%					2	8%		1	50%	4	4%
	2006/07	4	3%			1	5%						6	5%

English

		A		C		D		F		CR	I	W		
30316	2002/03	3	2%	4	8%	1	5%					5	5%	
	2003/04	2	1%	3	6%	1	5%	4	16%			2	2%	
	2004/05	5	4%	2	4%	1	5%	2	8%			3	3%	
	2005/06	2	1%	3	6%						1	50%	6	5%
	2006/07	4	3%	3	6%	2	10%					1	1%	
30319	2004/05	1	1%											
30326	2003/04	1	1%											
38497	2006/07			1	2%									
38996	2002/03											1	1%	
39717	2004/05	5	4%			1	5%					1	1%	
39967	2005/06	2	1%											
	2006/07	3	2%											
83582	2003/04	1	1%											
83877	2002/03	3	2%	1	2%							4	4%	
	2003/04	6	4%	2	4%	1	5%	1	4%			7	6%	
	2004/05	9	7%	3	6%	3	14%	1	4%			3	3%	
	2005/06	13	10%	3	6%	2	10%					6	5%	
	2006/07	10	7%									6	5%	
84367	2003/04	1	1%											
84374	2003/04	2	1%	2	4%							4	4%	
84877	2002/03	10	7%					1	4%			6	5%	
	2003/04	7	5%					1	4%			8	7%	
	2004/05	2	1%	5	10%			2	8%					
	2005/06			4	8%	2	10%					1	1%	
	2006/07	10	7%									6	5%	
89112	2002/03	5	4%	1	2%							6	5%	
	2005/06	3	2%	1	2%			3	12%			5	5%	
	2006/07	10	7%					4	16%					
89125	2006/07	4	3%	2	4%			3	12%			8	7%	
90753	2006/07									1	100%			

Geology

		A		B		C		D		F	
38836	2002/03	2	8%	2	29%						
	2003/04	3	12%	1	14%						
	2004/05	5	19%								
	2005/06	5	19%	1	14%	1	50%	1	50%	1	100%
	2006/07	2	8%	1	14%	1	50%				
38837	2002/03	4	15%								
90081	2005/06	3	12%	2	29%			1	50%		
	2006/07	2	8%								

History

		A		B		C	D	F	I	W
30443	2003/04	1	1%	1	2%					
30445	2003/04	1	1%							
30446	2004/05	2	2%							

History

		A	B	C	D	F	I	W							
30457	2004/05	1	1%												
35937	2004/05	1	1%												
35938	2003/04	1	1%												
37642	2006/07	7	6%	5	9%			2	4%						
38700	2003/04	4	4%	8	15%	5	18%		6	12%					
	2004/05	3	3%	1	2%	3	11%	1	25%	1	4%	13	25%		
38704	2002/03	3	3%	2	4%	5	18%			9	36%		4	8%	
40049	2005/06	12	11%	4	7%	1	4%			1	4%		5	10%	
40603	2006/07	10	9%	2	4%	1	4%					1	100%	2	4%
80438	2006/07			1	2%										
80453	2002/03	1	1%												
80460	2002/03			1	2%										
84323	2006/07	1	1%												
84324	2005/06	7	6%	5	9%	5	18%	1	25%	1	4%			4	8%
88446	2003/04	1	1%												
88767	2002/03	10	9%	6	11%	2	7%			1	4%			3	6%
	2003/04	10	9%	5	9%	1	4%	1	25%	1	4%			5	10%
	2005/06	6	6%	2	4%	1	4%			1	4%			1	2%
	2006/07	7	6%	4	7%	2	7%							1	2%
89900	2004/05	1	1%												
89902	2004/05	14	13%	6	11%	1	4%			4	16%				
90476	2006/07	5	5%	1	2%	1	4%	1	25%	3	12%			6	12%

Math

		A	B	C	D	F	W							
30570	2005/06	1	2%	1	2%									
30574	2005/06			1	2%									
34638	2004/05	1	2%											
	2006/07	1	2%	1	2%									
35380	2002/03	2	4%											
	2003/04			1	2%									
	2004/05	1	2%	3	7%	2	11%	1	13%	4	40%	1	2%	
	2005/06											1	2%	
	2006/07	5	10%	2	5%			3	38%			3	6%	
39196	2003/04	3	6%	1	2%	1	5%			1	10%	2	4%	
	2004/05	1	2%	7	16%									
	2005/06	3	6%	2	5%							1	2%	
	2006/07	3	6%											
39585	2004/05	3	6%	1	2%	1	5%	1	13%				2	4%
	2005/06	1	2%	1	2%	2	11%						1	2%
	2006/07	1	2%	1	2%	2	11%						1	2%
40136	2005/06	2	4%					1	13%	1	10%		3	6%
	2006/07	3	6%	2	5%	1	5%			1	10%		1	2%
80578	2006/07	1	2%											
89249	2002/03	2	4%										1	2%
	2003/04	1	2%	4	9%								2	4%
	2004/05	1	2%	3	7%			1	13%				7	13%

Math

		A		B		C		D		F		W	
	2005/06	2	4%	4	9%	4	21%			1	10%	5	10%
	2006/07	3	6%	3	7%							1	2%
89640	2003/04	2	4%										
89879	2004/05	1	2%	2	5%	2	11%						
	2005/06	3	6%	1	2%	2	11%			1	10%	4	8%
	2006/07	1	2%			1	5%					4	8%
90085	2005/06	2	4%	1	2%	1	5%			1	10%	4	8%
	2006/07	2	4%	2	5%			1	13%			4	8%
90557	2006/07											4	8%

Music

		A		B		C		D		F		W	
30592	2002/03	1	3%										
37695	2003/04	5	16%	6	40%	3	50%			2	25%	4	24%
	2004/05	5	16%	1	7%	1	17%	1	50%	2	25%	5	29%
	2005/06	2	6%	2	13%	2	33%	1	50%	1	13%	1	6%
38745	2005/06	1	3%										
40800	2006/07	10	31%	4	27%					1	13%	5	29%
80600	2006/07	6	19%	2	13%					2	25%	2	12%
89548	2003/04	1	3%										
89682	2006/07	1	3%										

Philosophy

		A		B		C		D		F		NC		W	
30684	2006/07	1	2%												
30685	2003/04	5	10%	4	9%	2	11%			2	14%	3	100%	3	10%
30689	2006/07	1	2%												
35545	2005/06	4	8%	12	27%	3	16%			1	7%			5	16%
35940	2005/06			1	2%										
38710	2002/03	8	16%	9	20%	6	32%	1	50%	2	14%			3	10%
39514	2006/07	1	2%												
40050	2005/06	4	8%	4	9%	2	11%			1	7%				
40653	2006/07	6	12%	5	11%	1	5%							4	13%
84841	2004/05	1	2%												
88786	2005/06	7	14%	3	7%	2	11%			3	21%			7	23%
	2006/07	6	12%	6	13%	2	11%			2	14%			8	26%
90142	2005/06	3	6%	1	2%					1	7%				
90158	2005/06	3	6%			1	5%	1	50%	2	14%			1	3%

Physics

		A		B		C		W	
38850	2002/03	2	9%	11	38%	1	11%	1	20%
39363	2003/04	1	4%	3	10%	1	11%		
	2004/05	3	13%			1	11%	1	20%
39587	2004/05	3	13%						
89586	2003/04	3	13%	5	17%	4	44%	1	20%
89587	2003/04	2	9%	1	3%			1	20%
89882	2004/05	2	9%	4	14%	1	11%		

Physics

		A		B		C		W	
2005/06	3	13%	3	10%			1	20%	
2006/07	4	17%	2	7%	1	11%			

Psychology

		A		B		C		D		F		I		CR		W	
30708	2004/05	7	21%	5	12%	3	12%	1	33%							5	19%
37645	2005/06	1	3%														
38083	2003/04	5	15%	8	19%	9	35%	1	33%	1	20%					1	4%
40032	2005/06	7	21%	6	14%	3	12%			2	40%					4	15%
83188	2006/07	1	3%														
88784	2002/03	5	15%	10	23%	6	23%	1	33%	1	20%					8	31%
	2003/04	6	18%	12	28%	4	15%									6	23%
89694	2003/04													1	100%		
90603	2006/07	1	3%	2	5%	1	4%			1	20%	3	100%			2	8%

Sociology

A

30746	2006/03	1	100%
--------------	---------	---	------

Social Science

A

37704	2002/03	1	100%
--------------	---------	---	------

Spanish

		A		B		C		F		W	
30760	2003/04	12	18%	1	8%	1	25%			9	56%
	2004/05	7	11%	1	8%	1	25%				
	2005/06	4	6%	3	23%					1	6%
	2006/07	8	12%	4	31%					2	13%
37024	2004/05	1	2%								
80765	2004/05	11	17%							2	13%
	2005/06	1	2%							1	6%
	2006/07	9	14%	1	8%			1	100%		
80770	2004/05	1	2%								
80772	2003/04	3	5%	1	8%						
89179	2003/04	3	5%								
89180	2002/03	6	9%	2	15%	2	50%			1	6%

Source: SMCCD Data Warehouse

Retention Count: Number of students with A,B,C,D,F,CR,NC, I grades.

Retention Rate: The percentage of students who complete a course with a grade of A,B,C,D,F,CR,NC, I out of total enrollments.

Success Count: Number of students with A,B,C,CR grades.

Success Rate: The percentage of students who complete a course with a grade of A,B,C,CR out of total enrollments.