



Skyline  
COLLEGE  
ACHIEVE

---

# Enrollment and Outcomes Report

---

*Prepared for:*

South San Francisco Unified School District

*Prepared by:*

Office of Planning, Research and Institutional Effectiveness

Spring 2008

# Table of Contents

2007 Placement Results by Feeder High School.....	3
Enrollment of First-Time Freshmen by High School of Origin.....	4
Enrollment of First-Time Freshmen by High School of Origin & Ethnicity 2003/04 to 2007/08.....	5
Enrollment of First-Time Freshmen by Educational Goal and by High School of Origin 2003/04 to 2007/08.....	6
Concurrently Enrolled Students by High School of Origin.....	7
Success and Retention of First-Time Freshmen from South San Francisco Unified School District.....	8
Success and Retention in All Courses of First-Time Freshmen by High School Origin..	9
Success and Retention in Basic Skills Courses of First-Time Freshmen by High School of Origin.....	10
Success and Retention of Concurrently Enrolled Students by High School of Origin....	11
Fall to Spring Persistence of First-Time Freshmen from South San Francisco Unified School District.....	12

## Skyline College 2007 Placement Results by Feeder High School

	Capuchino High School		El Camino High School		Jefferson High School		Oceana High School		So. San Fran. High School		Terra Nova High School		Westmoor High School		All Test Takers	
	Count	%	Count	%	Count	%	Count	%	Count	%	Count	%	Count	%	Count	%
<b>English</b>																
UNDETERMINED	11	11%	22	13%	19	18%	2	2%	23	14%	3	2%	25	14%	324	13%
ENGL 826	21	22%	31	19%	35	32%	17	21%	37	23%	10	7%	31	17%	516	21%
ENGL 836	50	52%	78	47%	39	36%	43	52%	64	40%	75	50%	88	49%	1093	44%
ENGL 105	6	6%	11	7%	7	6%	4	5%	12	8%	25	17%	10	6%	216	9%
ENGL 100	8	8%	23	14%	8	7%	16	20%	23	14%	37	25%	25	14%	342	14%
<b>TOTAL</b>	<b>96</b>	<b>100%</b>	<b>165</b>	<b>100%</b>	<b>108</b>	<b>100%</b>	<b>82</b>	<b>100%</b>	<b>159</b>	<b>100%</b>	<b>150</b>	<b>100%</b>	<b>179</b>	<b>100%</b>	<b>2491</b>	<b>100%</b>
<b>Reading</b>																
UNDETERMINED	10	10%	20	12%	17	16%	2	2%	20	13%	2	1%	21	12%	291	12%
READ 826	22	23%	39	24%	34	31%	17	21%	41	26%	19	13%	37	21%	567	23%
READ 836	39	41%	69	42%	40	37%	35	43%	62	39%	61	41%	84	47%	973	39%
READ 420	25	26%	37	22%	17	16%	28	34%	36	23%	68	45%	37	21%	660	26%
<b>TOTAL</b>	<b>96</b>	<b>100%</b>	<b>165</b>	<b>100%</b>	<b>108</b>	<b>100%</b>	<b>82</b>	<b>100%</b>	<b>159</b>	<b>100%</b>	<b>150</b>	<b>100%</b>	<b>179</b>	<b>100%</b>	<b>2491</b>	<b>100%</b>
<b>Language</b>																
ESOL 810	0	0%	0	0%	1	8%	0	0%	1	4%	0	0%	2	6%	53	7%
ESOL 820	0	0%	2	25%	0	0%	1	50%	2	8%	0	0%	0	0%	70	9%
ESOL 830	0	0%	0	0%	1	8%	0	0%	4	17%	0	0%	3	8%	120	16%
ESOL 840	4	50%	0	0%	7	54%	1	50%	7	29%	0	0%	10	28%	234	30%
ESOL 400	4	50%	6	75%	4	31%	0	0%	10	42%	1	0%	21	58%	297	38%
<b>TOTAL</b>	<b>8</b>	<b>100%</b>	<b>8</b>	<b>100%</b>	<b>13</b>	<b>100%</b>	<b>2</b>	<b>100%</b>	<b>24</b>	<b>100%</b>	<b>1</b>	<b>0%</b>	<b>36</b>	<b>100%</b>	<b>774</b>	<b>100%</b>
<b>Math</b>																
UNDETERMINED	9	10%	11	7%	11	10%	10	13%	27	15%	1	1%	20	9%	268	11%
MATH 805 + 806	20	22%	19	12%	29	25%	14	18%	21	12%	9	7%	31	14%	513	20%
MATH 111	8	9%	16	10%	22	19%	8	10%	18	10%	13	10%	22	10%	273	11%
MATH 111, 110	27	30%	33	21%	27	24%	17	22%	41	23%	39	30%	52	23%	652	26%
MATH 115, 120, 122	12	13%	41	26%	18	16%	14	18%	41	23%	41	31%	56	24%	445	18%
BUS 120, 123; MATH 130, 150, 200, 201, 222, 241	14	15%	28	18%	3	3%	10	13%	22	12%	21	16%	34	15%	272	11%
MATH 251	1	1%	7	5%	4	4%	4	5%	8	4%	8	6%	14	6%	114	4%
<b>TOTAL</b>	<b>91</b>	<b>100%</b>	<b>155</b>	<b>100%</b>	<b>114</b>	<b>100%</b>	<b>77</b>	<b>100%</b>	<b>178</b>	<b>100%</b>	<b>132</b>	<b>100%</b>	<b>229</b>	<b>100%</b>	<b>2537</b>	<b>100%</b>

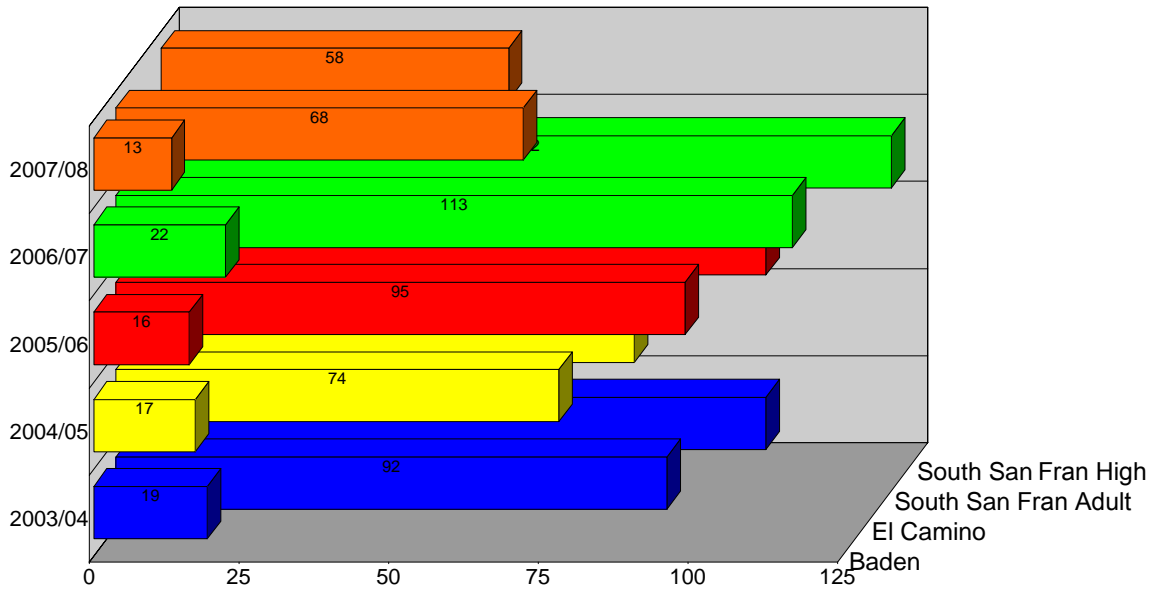
### Skyline College Enrollment of First-Time Freshmen by High School of Origin

	Baden	El Camino	South San Francisco Adult	South San Francisco High	Total
2003/04	19	92	4	101	216
2004/05	17	74	7	79	177
2005/06	16	95		101	212
2006/07	22	113		122	257
2007/08	13	68		58	139
<b>Total</b>	<b>87</b>	<b>442</b>	<b>11</b>	<b>461</b>	<b>1001</b>

Source: SMCCCD Data Warehouse

Note: Counts are of first-time freshmen whose age at term is 22 or under and enrolled as of first census.

### Enrollment by High School of Origin



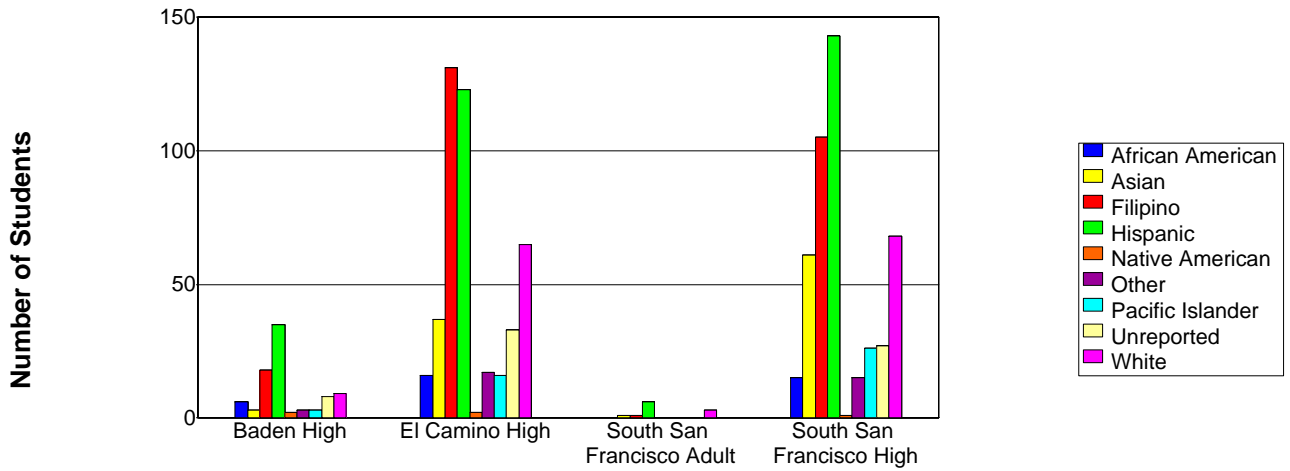
## Skyline College Enrollment of First-Time Freshman by High School of Origin & Ethnicity 2003/04 to 2007/08

	Baden	El Camino	South San Francisco Adult	South San Francisco High	Average
African American	5%	4%		3%	3%
Asian	2%	9%	5%	13%	10%
Filipino	23%	30%	14%	22%	26%
Hispanic	40%	27%	43%	29%	29%
Native American	2%	0%		0%	0%
Other	2%	4%		3%	3%
Pacific Islander	4%	3%		6%	4%
Unreported	11%	9%		6%	8%
White	11%	14%	38%	18%	15%

Source: SMCCCD Data Warehouse

Note: Counts are of first-time freshmen whose age at term is 22 or under.

### Ethnicity by High School of Origin



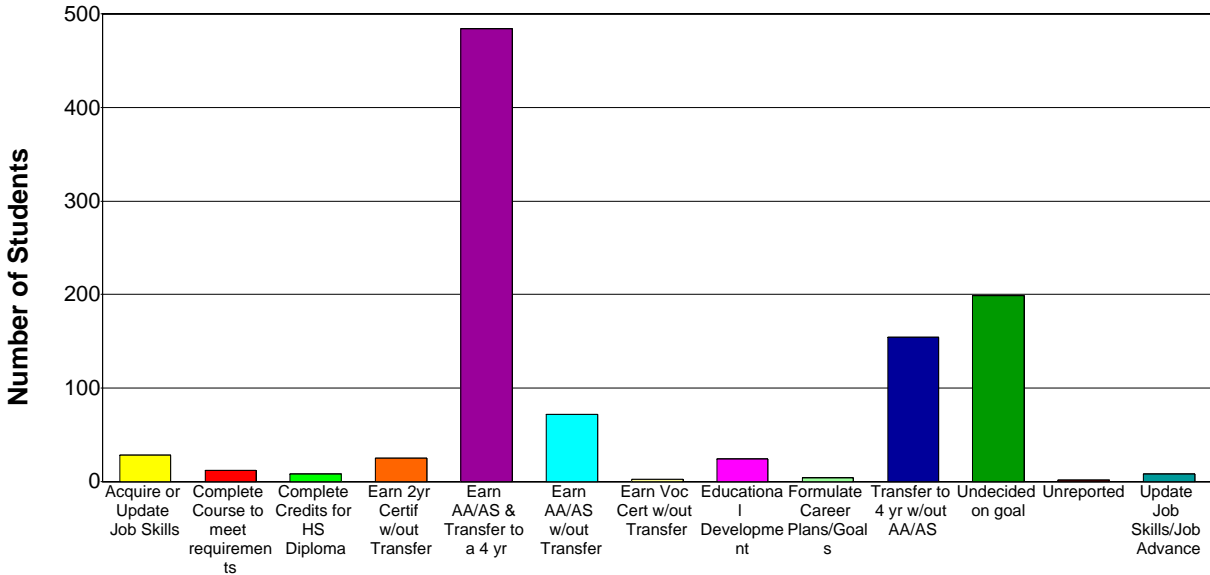
### Skyline College Enrollment of First-Time Freshmen by Educational Goal and by High School of Origin 2003/04 to 2007/08

	Bade	El Camin	South San Francisco	South San Francisco	Average
Acquire or Update Job Skills	1%	2%	5%	2%	2%
Complete Course to meet requirements	1%	2%		1%	1%
Complete Credits for HS Diploma	0%	1%		1%	1%
Earn 2yr Certif w/out Transfer	3%	1%	10%	2%	2%
Earn AA/AS & Transfer to a 4 yr	51%	52%	62%	52%	52%
Earn AA/AS w/out Transfer	10%	4%	5%	5%	5%
Earn Voc Cert w/out Transfer	0%	0%			0%
Educational Development	3%	3%		1%	2%
Formulate Career Plans/Goals		1%		0%	0%
Transfer to 4 yr w/out AA/AS	9%	16%		20%	17%
Undecided on goal	21%	18%	19%	17%	18%
Unreported		0%			0%
Update Job Skills/Job Advance	1%	0%		0%	0%

Source: SMCCCD Data Warehouse

Note: Counts are of first-time freshmen whose age at term is 22 or under and enrolled as of first census.

#### Ethnicity by High School of Origin

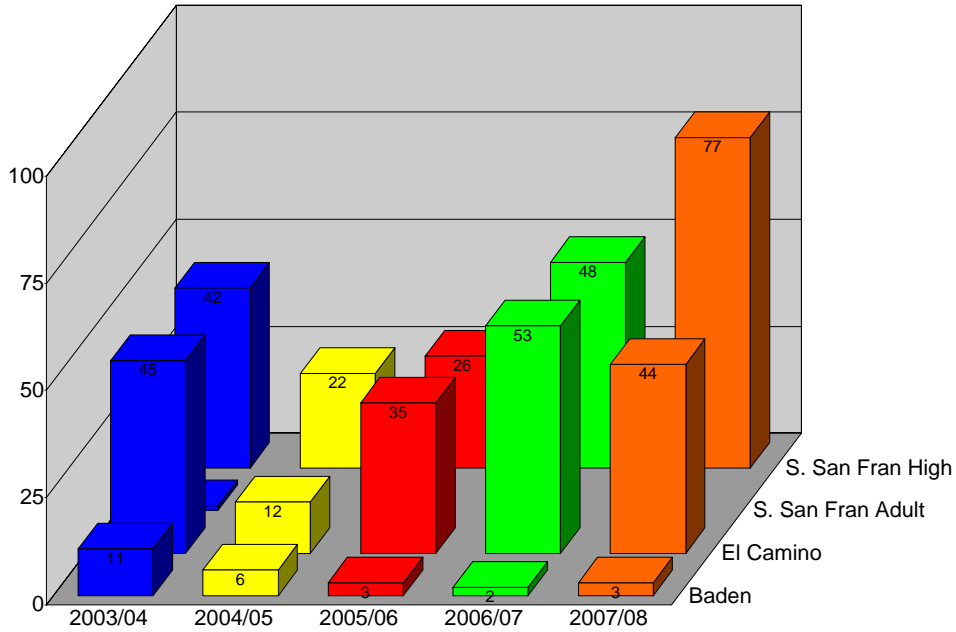


### Skyline College Concurrently Enrolled Students by High School of Origin

	Baden	El Camino	South San Francisco Adult	South San Francisco High	Total
2003/04	23	59	1	45	128
2004/05	11	18		29	58
2005/06	8	43		35	86
2006/07	5	67		73	145
2007/08	9	53		123	185
<b>Count</b>	<b>56</b>	<b>240</b>	<b>1</b>	<b>305</b>	<b>602</b>

Source: SMCCCD Data Warehouse

### Enrollment by High School of Origin



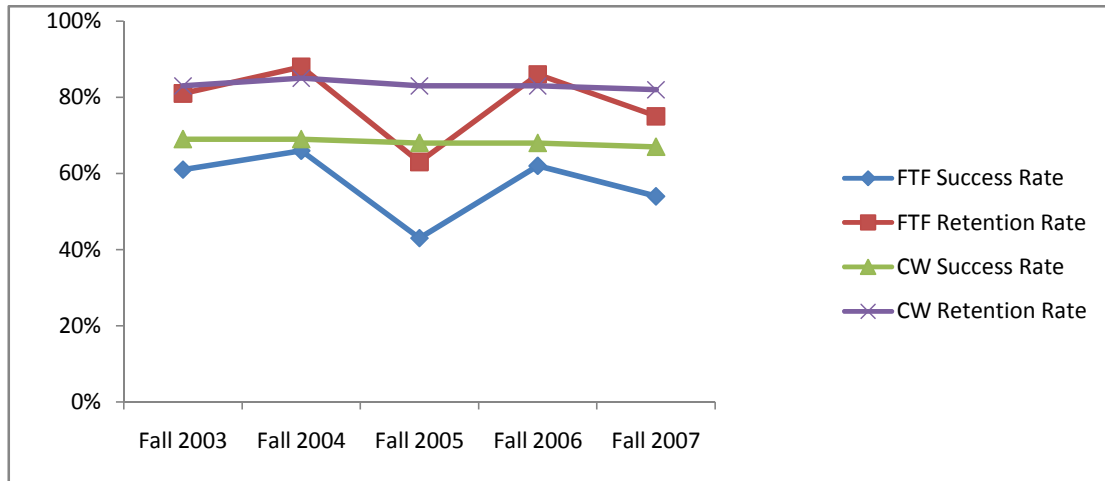
## Skyline College Success and Retention of First-Time Freshmen from South San Francisco Unified School District

### First-Time Freshmen All Courses

	FTF Success Rate	FTF Retention Rate
Fall 2003	61%	81%
Fall 2004	66%	88%
Fall 2005	43%	63%
Fall 2006	62%	86%
Fall 2007	54%	75%

### Collegewide All Courses

	CW Success Rate	CW Retention Rate
Fall 2003	69%	83%
Fall 2004	69%	85%
Fall 2005	68%	83%
Fall 2006	68%	83%
Fall 2007	67%	82%

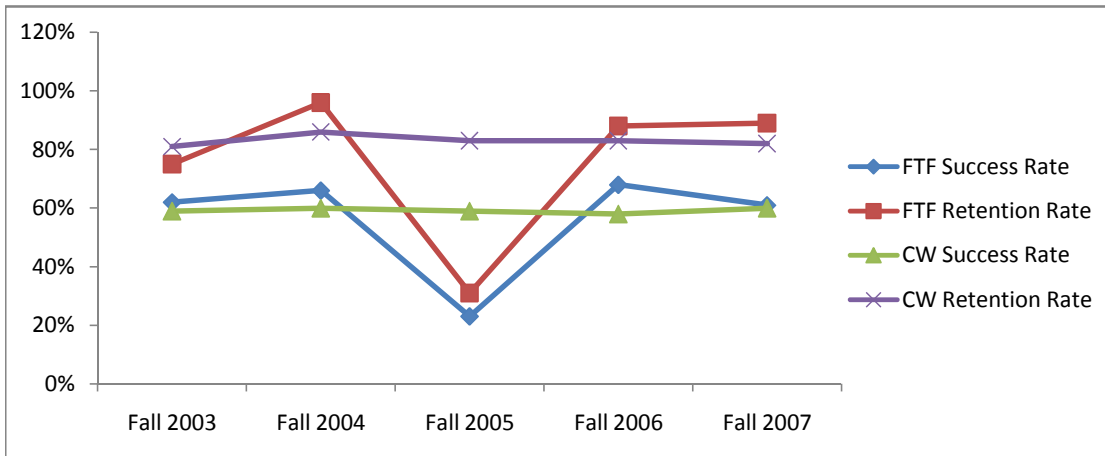


### First-Time Freshmen Basic Skills Courses

	FTF Success Rate	FTF Retention Rate
Fall 2003	62%	75%
Fall 2004	66%	96%
Fall 2005	23%	31%
Fall 2006	68%	88%
Fall 2007	61%	89%

### Collegewide Basic Skills Courses

	CW Success Rate	CW Retention Rate
Fall 2003	59%	81%
Fall 2004	60%	86%
Fall 2005	59%	83%
Fall 2006	58%	83%
Fall 2007	60%	82%



Source: SMCCCD Data Warehouse

Retention Rate: Percentage of students who complete course with A,B,C,D,F,CR,NC,W,I grades out of total enrollments  
 Success Rate: Percentage of students who complete course with A,B,C,CR grades out of total enrollments

## Skyline College Success and Retention in All Courses of First-Time Freshmen by High School of Origin

9

		Headcount Total	Success Count	Success Rate	Retention Count	Retention Rate
Fall 2003	Baden	36	16	44%	24	67%
	El Camino	246	154	63%	207	84%
	South San Francisco Adult	2	1	50%	2	100%
	South San Francisco High	200	123	62%	161	81%
	<b>Total</b>	<b>484</b>	<b>294</b>	<b>61%</b>	<b>394</b>	<b>81%</b>
Fall 2004	Baden	21	5	24%	16	76%
	El Camino	158	103	65%	137	87%
	South San Francisco Adult	7	5	71%	7	100%
	South San Francisco High	166	119	72%	150	90%
	<b>Total</b>	<b>352</b>	<b>232</b>	<b>66%</b>	<b>310</b>	<b>88%</b>
Fall 2005	Baden	27	15	56%	20	74%
	El Camino	329	148	45%	208	63%
	South San Francisco High	350	138	39%	214	61%
	<b>Total</b>	<b>706</b>	<b>301</b>	<b>43%</b>	<b>442</b>	<b>63%</b>
Fall 2006	Baden	54	23	43%	48	89%
	El Camino	360	233	65%	318	88%
	South San Francisco High	359	224	62%	300	84%
	<b>Total</b>	<b>773</b>	<b>480</b>	<b>62%</b>	<b>666</b>	<b>86%</b>
Fall 2007	Baden	12	2	17%	7	58%
	El Camino	180	93	52%	133	74%
	South San Francisco High	132	80	61%	102	77%
	<b>Total</b>	<b>324</b>	<b>175</b>	<b>54%</b>	<b>242</b>	<b>75%</b>

Source: SMCCCD Data Warehouse

Success Rate: The percentage of students who complete a course with a grade of A,B,C,CR out of total enrollments.

Retention Rate: The percentage of students who complete a course with a grade of A,B,C,D,F,CR,NC,I out of total enrollments.

## Skyline College Success and Retention in Basic Skills Courses of First-Time Freshmen by High School of Origin

10

		Headcount Total	Success Count	Success Rate	Retention Count	Retention Rate
Fall 2003	Baden	13	6	46%	7	54%
	El Camino	60	41	68%	51	85%
	South San Francisco High	40	23	57%	27	68%
	<b>Total</b>	<b>113</b>	<b>70</b>	<b>62%</b>	<b>85</b>	<b>75%</b>
Fall 2004	Baden	3			3	100%
	El Camino	47	33	70%	45	96%
	South San Francisco Adult	2			2	100%
	South San Francisco High	25	18	72%	24	96%
	<b>Total</b>	<b>77</b>	<b>51</b>	<b>66%</b>	<b>74</b>	<b>96%</b>
Fall 2005	Baden	4			1	25%
	El Camino	126	30	24%	41	33%
	South San Francisco High	144	32	22%	44	31%
	<b>Total</b>	<b>274</b>	<b>62</b>	<b>23%</b>	<b>86</b>	<b>31%</b>
Fall 2006	Baden	8	5	63%	8	100%
	El Camino	88	57	65%	79	90%
	South San Francisco High	75	54	72%	64	85%
	<b>Total</b>	<b>171</b>	<b>116</b>	<b>68%</b>	<b>151</b>	<b>88%</b>
Fall 2007	Baden	2			2	100%
	El Camino	16	9	56%	15	94%
	South San Francisco High	28	19	68%	24	86%
	<b>Total</b>	<b>46</b>	<b>28</b>	<b>61%</b>	<b>41</b>	<b>89%</b>

Source: SMCCCD Data Warehouse

Success Rate: The percentage of students who complete a course with a grade of A,B,C,CR out of total enrollments.

Retention Rate: The percentage of students who complete a course with a grade of A,B,C,D,F,CR,NC,I out of total enrollments.

## Skyline College Success and Retention of Concurrently Enrolled Students by High School of Origin

		Headcount Total	Success Count	Success Rate	Retention Count	Retention Rate
Fall 2003	Baden	2	1	50%	1	50%
	El Camino	1	1	100%	1	100%
	South San Francisco High	3	2	67%	3	100%
	<b>Total</b>	6	4	67%	5	83%
Fall 2004	Baden	1	1	100%	1	100%
	El Camino	2	1	50%	1	50%
	South San Francisco High	4			1	25%
	<b>Total</b>	7	2	29%	3	43%
Fall 2005	South San Francisco High	4	4	100%	4	100%
	<b>Total</b>	4	4	100%	4	100%
Fall 2006	El Camino	9	7	78%	8	89%
	South San Francisco High	16	12	75%	16	100%
	<b>Total</b>	25	19	76%	24	96%
Fall 2007	El Camino	5	2	40%	5	100%
	South San Francisco High	30	22	73%	30	100%
	<b>Total</b>	35	24	69%	35	100%

Data Source: SMCCCD Data Warehouse

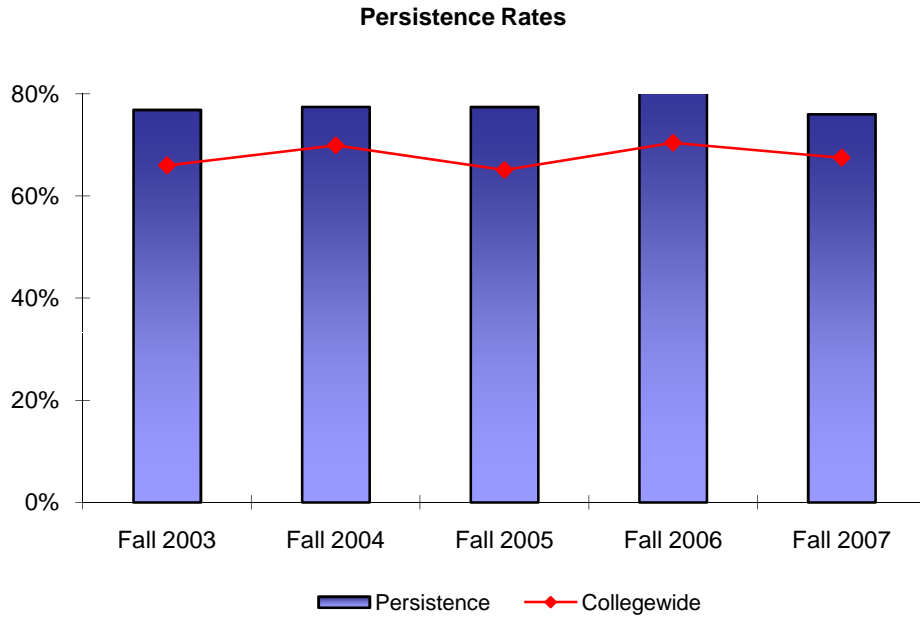
Note: No first-time freshman students from Thornton High School in the fall semesters.

Success Rate: The percentage of students who complete a course with a grade of A,B,C,CR out of total enrollments.

Retention Rate: The percentage of students who complete a course with a grade of A,B,C,D,F,CR,NC,I out of total enrollments.

**South San Francisco Unified School District  
Fall to Spring Persistence of  
First-Time Skyline College Students**

Cohort	Fall	Spring	Persistence	Collegewide
Fall 2003	147	113	76.9%	66.0%
Fall 2004	111	86	77.5%	69.9%
Fall 2005	164	127	77.4%	65.1%
Fall 2006	204	173	84.8%	70.4%
Fall 2007	96	73	76.0%	67.5%
<b>Average</b>			<b>79.2%</b>	<b>67.8%</b>



Note: Each fall cohort consists of students enrolled in at least one course that fall term with an A, B, C, D, F, CR, NC, W, or I grade notation. Persistence rates are a percentage of each cohort who enrolled in at least one course the following spring with an A, B, C, D, F, CR, NC, W, or I grade notation.

Source: SMCCCD Data Warehouse