



Skyline
COLLEGE
ACHIEVE

Enrollment and Outcomes Report

Prepared for:

Jefferson Union High School District

Prepared by:

Office of Planning, Research and Institutional Effectiveness

Spring 2008

Table of Contents

2007 Placement Results by Feeder High School.....	3
Enrollment of First-Time Freshmen by High School of Origin.....	4
Enrollment of First-Time Freshmen by High School of Origin & Ethnicity 2003/04 to 2007/08.....	5
Enrollment of First-Time Freshmen by Educational Goal and by High School of Origin 2003/04 to 2007/08.....	6
Concurrently Enrolled Students by High School of Origin.....	7
Success and Retention of First-Time Freshmen from Jefferson Union High School District.....	8
Success and Retention in All Courses of First-Time Freshmen by High School Origin..	9
Success and Retention in Basic Skills Courses of First-Time Freshmen by High School of Origin.....	10
Success and Retention of Concurrently Enrolled Students by High School of Origin....	11
Fall to Spring Persistence of First-Time Freshmen from Jefferson Union High School District.....	12

Skyline College 2007 Placement Results by Feeder High School

	Capuchino High School		El Camino High School		Jefferson High School		Oceana High School		So. San Fran. High School		Terra Nova High School		Westmoor High School		All Test Takers	
	Count	%	Count	%	Count	%	Count	%	Count	%	Count	%	Count	%	Count	%
English																
UNDETERMINED	11	11%	22	13%	19	18%	2	2%	23	14%	3	2%	25	14%	324	13%
ENGL 826	21	22%	31	19%	35	32%	17	21%	37	23%	10	7%	31	17%	516	21%
ENGL 836	50	52%	78	47%	39	36%	43	52%	64	40%	75	50%	88	49%	1093	44%
ENGL 105	6	6%	11	7%	7	6%	4	5%	12	8%	25	17%	10	6%	216	9%
ENGL 100	8	8%	23	14%	8	7%	16	20%	23	14%	37	25%	25	14%	342	14%
TOTAL	96	100%	165	100%	108	100%	82	100%	159	100%	150	100%	179	100%	2491	100%
Reading																
UNDETERMINED	10	10%	20	12%	17	16%	2	2%	20	13%	2	1%	21	12%	291	12%
READ 826	22	23%	39	24%	34	31%	17	21%	41	26%	19	13%	37	21%	567	23%
READ 836	39	41%	69	42%	40	37%	35	43%	62	39%	61	41%	84	47%	973	39%
READ 420	25	26%	37	22%	17	16%	28	34%	36	23%	68	45%	37	21%	660	26%
TOTAL	96	100%	165	100%	108	100%	82	100%	159	100%	150	100%	179	100%	2491	100%
Language																
ESOL 810	0	0%	0	0%	1	8%	0	0%	1	4%	0	0%	2	6%	53	7%
ESOL 820	0	0%	2	25%	0	0%	1	50%	2	8%	0	0%	0	0%	70	9%
ESOL 830	0	0%	0	0%	1	8%	0	0%	4	17%	0	0%	3	8%	120	16%
ESOL 840	4	50%	0	0%	7	54%	1	50%	7	29%	0	0%	10	28%	234	30%
ESOL 400	4	50%	6	75%	4	31%	0	0%	10	42%	1	0%	21	58%	297	38%
TOTAL	8	100%	8	100%	13	100%	2	100%	24	100%	1	0%	36	100%	774	100%
Math																
UNDETERMINED	9	10%	11	7%	11	10%	10	13%	27	15%	1	1%	20	9%	268	11%
MATH 805 + 806	20	22%	19	12%	29	25%	14	18%	21	12%	9	7%	31	14%	513	20%
MATH 111	8	9%	16	10%	22	19%	8	10%	18	10%	13	10%	22	10%	273	11%
MATH 111, 110	27	30%	33	21%	27	24%	17	22%	41	23%	39	30%	52	23%	652	26%
MATH 115, 120, 122	12	13%	41	26%	18	16%	14	18%	41	23%	41	31%	56	24%	445	18%
BUS 120, 123; MATH 130, 150, 200, 201, 222, 241	14	15%	28	18%	3	3%	10	13%	22	12%	21	16%	34	15%	272	11%
MATH 251	1	1%	7	5%	4	4%	4	5%	8	4%	8	6%	14	6%	114	4%
TOTAL	91	100%	155	100%	114	100%	77	100%	178	100%	132	100%	229	100%	2537	100%

Andy Davis, Assessment Coordinator

September 27, 2007

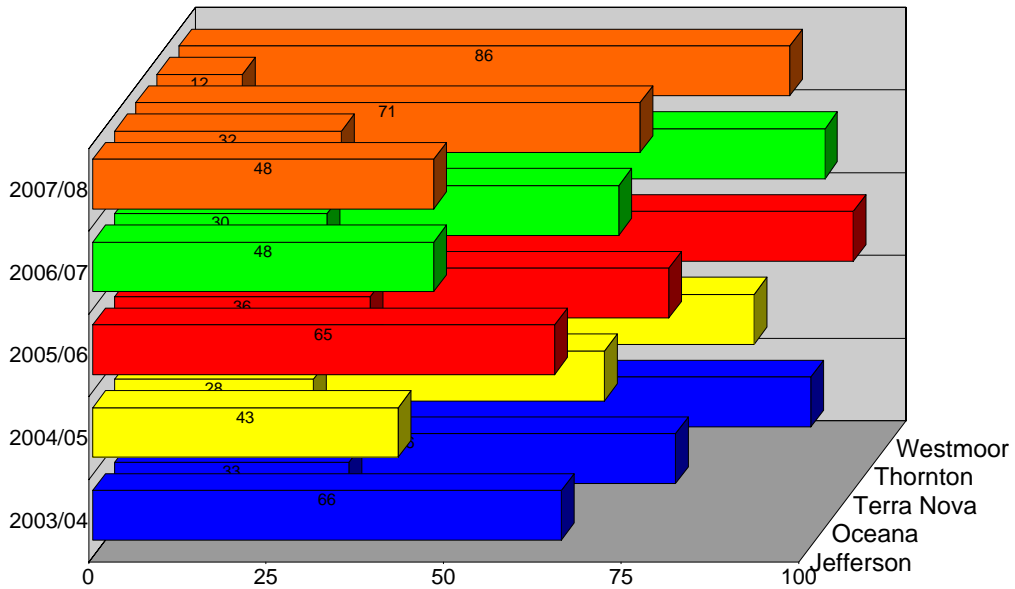
Skyline College Enrollment of First-Time Freshmen by High School of Origin

	Jefferson	Oceana High	Terra Nova	Thornton	Westmoor	Total
2003/04	66	33	76	17	89	281
2004/05	43	28	66	15	81	233
2005/06	65	36	75	15	95	286
2006/07	48	30	68	18	91	255
2007/08	48	32	71	12	86	249
Total	270	159	356	77	442	1304

Source: SMCCCD Data Warehouse

Note: Counts are of first-time freshmen whose age at term is 22 or under and enrolled as of first census.

Enrollment by High School of Origin



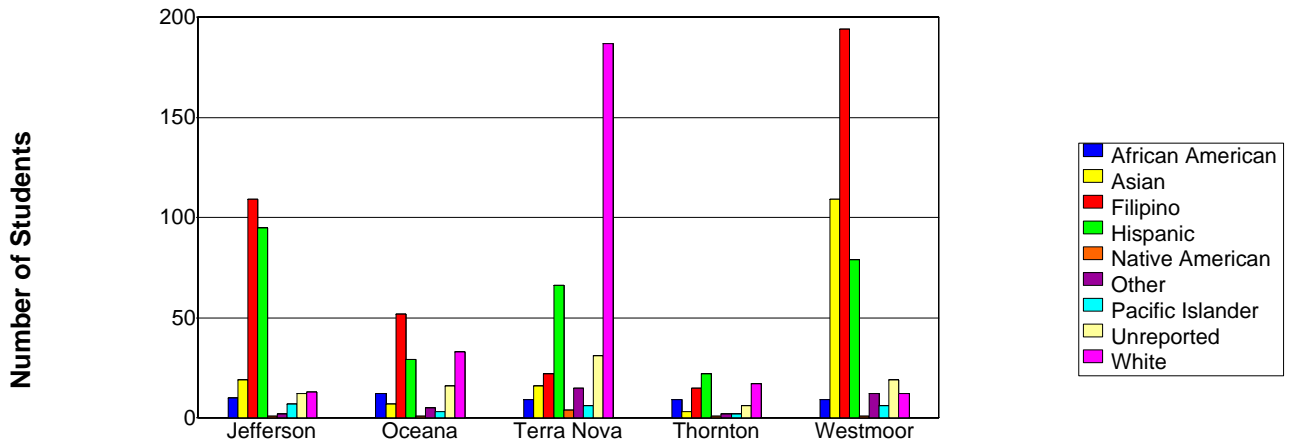
Skyline College Enrollment of First-Time Freshmen by High School of Origin & Ethnicity 2003/04 to 2007/08

	Jefferson	Oceana	Terra Nova	Thorton	Westmoor	Average
African American	4%	6%	2%	10%	2%	4%
Asian	8%	5%	4%	2%	24%	12%
Filipino	39%	33%	5%	23%	44%	30%
Hispanic	35%	20%	20%	26%	18%	22%
Native American	1%	0%	2%	2%	0%	1%
Other	1%	3%	4%	3%	3%	3%
Pacific Islander	3%	0%	2%	3%	1%	2%
Unreported	5%	10%	8%	8%	5%	7%
White	5%	21%	53%	23%	3%	20%

Source: SMCCCD Data Warehouse

Note: Counts are of first-time freshmen whose age at term is 22 or under and enrolled as of first census.

Ethnicity by High School of Origin



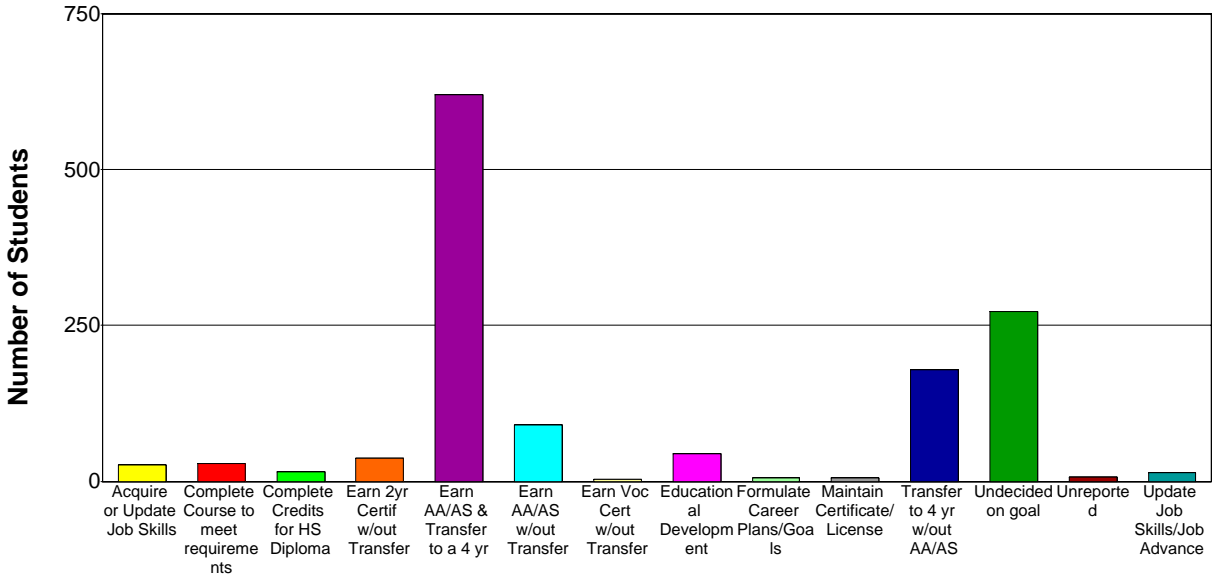
Skyline College Enrollment of First-Time Freshmen by Educational Goal and by High School of Origin 2003/04 to 2007/08

	Jefferson	Oceana	Terra Nova	Thorton	Westmoor	Average
Acquire or Update Job Skills	3%	0%	2%	8%	1%	2%
Complete Course to meet requirements	2%	1%	2%	1%	4%	2%
Complete Credits for HS Diploma	1%	1%	0%		1%	1%
Earn 2yr Certif w/out Transfer	1%	0%	2%	6%	1%	1%
Earn AA/AS & Transfer to a 4 yr	54%	49%	46%	49%	52%	50%
Earn AA/AS w/out Transfer	7%	6%	6%	5%	5%	6%
Earn Voc Cert w/out Transfer			0%	0%		0%
Educational Development	2%	1%	4%	1%	1%	2%
Formulate Career Plans/Goals	0%	2%	0%			0%
Maintain Certificate/License	0%		0%		0%	0%
Transfer to 4 yr w/out AA/AS	10%	16%	16%	11%	19%	15%
Undecided on goal	18%	21%	21%	16%	16%	18%
Unreported	1%	1%	0%	2%	0%	1%
Update Job Skills/Job Advance	1%	2%	1%	1%	0%	1%

Source: SMCCCD Data Warehouse

Note: Counts are of first-time freshmen whose age at term is 22 or under and enrolled as of first census.

Ethnicity by High School of Origin

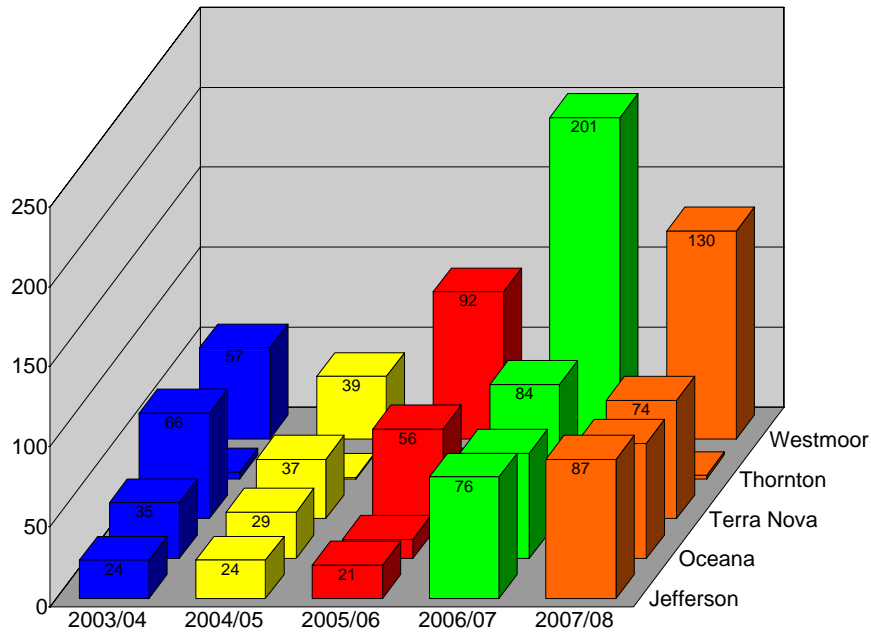


Skyline College Concurrently Enrolled Students by High School of Origin

	Jefferson	Oceana High	Terra Nova	Thornton	Westmoor	Total
2003/04	41	51	92	4	70	258
2004/05	33	40	58	2	48	181
2005/06	38	17	96	10	124	285
2006/07	123	100	139	4	310	676
2007/08	142	133	125	4	206	610
Count	377	341	510	24	758	2010

Source: SMCCCD Data Warehouse

Enrollment by High School of Origin



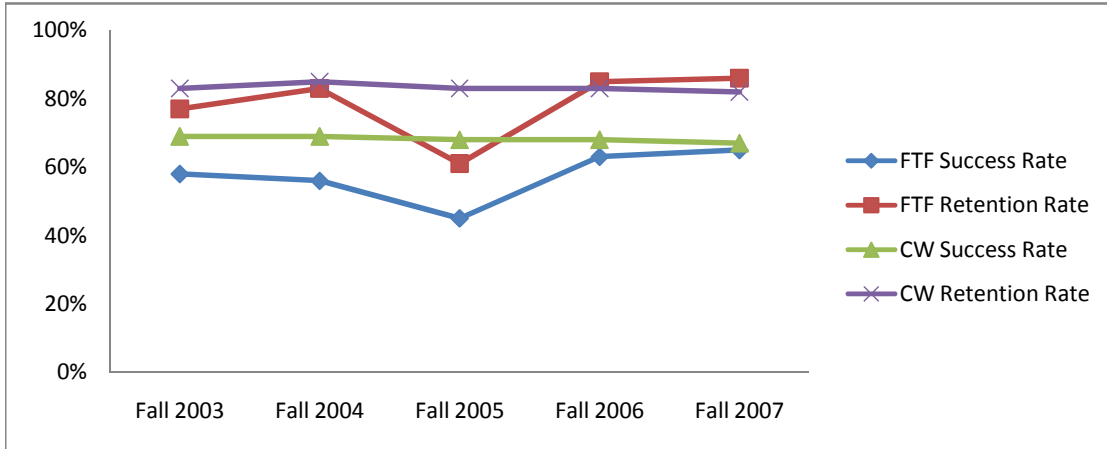
Skyline College Success and Retention of First-Time Freshmen from Jefferson Union High School District

First-Time Freshmen All Courses

	FTF Success Rate	FTF Retention Rate
Fall 2003	58%	77%
Fall 2004	56%	83%
Fall 2005	45%	61%
Fall 2006	63%	85%
Fall 2007	65%	86%

Collegewide All Courses

	CW Success Rate	CW Retention Rate
Fall 2003	69%	83%
Fall 2004	69%	85%
Fall 2005	68%	83%
Fall 2006	68%	83%
Fall 2007	67%	82%

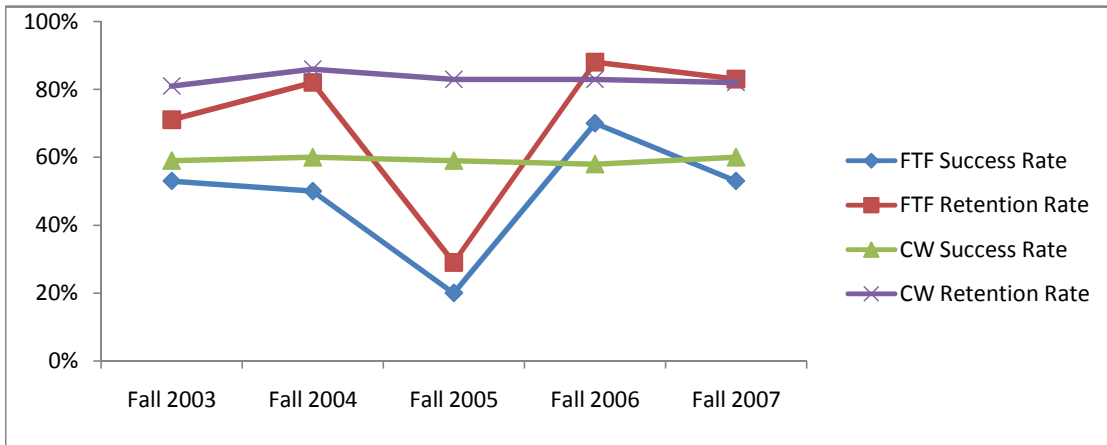


First-Time Freshmen Basic Skills Courses

	FTF Success Rate	FTF Retention Rate
Fall 2003	53%	71%
Fall 2004	50%	82%
Fall 2005	20%	29%
Fall 2006	70%	88%
Fall 2007	53%	83%

Collegewide Basic Skills Courses

	CW Success Rate	CW Retention Rate
Fall 2003	59%	81%
Fall 2004	60%	86%
Fall 2005	59%	83%
Fall 2006	58%	83%
Fall 2007	60%	82%



Source: SMCCCD Data Warehouse

Retention Rate: Percentage of students who complete course with A,B,C,D,F,CR,NC,W,I grades out of total enrollments
 Success Rate: Percentage of students who complete course with A,B,C,CR grades out of total enrollments

Skyline College Success and Retention in All Courses of First-Time Freshmen by High School of Origin

9

		Headcount Total	Success Count	Success Rate	Retention Count	Retention Rate
Fall 2003	Jefferson	133	82	62%	104	78%
	Oceana	72	41	57%	54	75%
	Terra Nova	177	109	62%	144	81%
	Thornton	24	3	13%	11	46%
	Westmoor	156	89	57%	122	78%
	Total	562	324	58%	435	77%
Fall 2004	Jefferson	54	32	59%	49	91%
	Oceana	66	32	48%	50	76%
	Terra Nova	110	62	56%	92	84%
	Thornton	31	14	45%	22	71%
	Westmoor	205	121	59%	173	84%
	Total	466	261	56%	386	83%
Fall 2005	Jefferson	208	80	38%	124	60%
	Oceana	132	73	55%	87	66%
	Terra Nova	244	118	48%	159	65%
	Thornton	33	6	18%	14	42%
	Westmoor	343	154	45%	206	60%
	Total	960	431	45%	590	61%
Fall 2006	Jefferson	128	78	61%	112	88%
	Oceana	77	51	66%	66	86%
	Terra Nova	187	128	68%	165	88%
	Thornton	31	9	29%	19	61%
	Westmoor	250	159	64%	209	84%
	Total	673	425	63%	571	85%
Fall 2007	Jefferson	85	41	48%	68	80%
	Oceana	73	43	59%	59	81%
	Terra Nova	143	104	73%	126	88%
	Thornton	29	14	48%	21	72%
	Westmoor	233	166	71%	209	90%
	Total	563	368	65%	483	86%

Source: SMCCCD Data Warehouse

Success Rate: The percentage of students who complete a course with a grade of A,B,C,CR out of total enrollments.

Retention Rate: The percentage of students who complete a course with a grade of A,B,C,D,F,CR,NC,I out of total enrollments.

Skyline College Success and Retention in Basic Skills Courses of First-Time Freshmen by High School of Origin

10

		Headcount Total	Success Count	Success Rate	Retention Count	Retention Rate
Fall 2003	Jefferson	39	22	56%	28	72%
	Oceana	16	9	56%	13	81%
	Terra Nova	34	18	53%	24	71%
	Thornton	8	2	25%	3	38%
	Westmoor	50	27	54%	37	74%
	Total	147	78	53%	105	71%
Fall 2004	Jefferson	6	3	50%	5	83%
	Oceana	15	6	40%	9	60%
	Terra Nova	22	12	55%	21	95%
	Thornton	14	2	14%	9	64%
	Westmoor	45	28	62%	40	89%
	Total	102	51	50%	84	82%
Fall 2005	Jefferson	88	17	19%	28	32%
	Oceana	42	10	24%	12	29%
	Terra Nova	78	19	24%	25	32%
	Thornton	19	3	16%	7	37%
	Westmoor	127	21	17%	32	25%
	Total	354	70	20%	104	29%
Fall 2006	Jefferson	39	30	77%	38	97%
	Oceana	12	6	50%	10	83%
	Terra Nova	19	16	84%	17	89%
	Thornton	10	4	40%	6	60%
	Westmoor	72	50	69%	63	88%
	Total	152	106	70%	134	88%
Fall 2007	Jefferson	15	6	40%	12	80%
	Oceana	11	7	64%	11	100%
	Terra Nova	10	5	50%	9	90%
	Thornton	4	1	25%	2	50%
	Westmoor	36	21	58%	29	81%
	Total	76	40	53%	63	83%

Source: SMCCCD Data Warehouse

Success Rate: The percentage of students who complete a course with a grade of A,B,C,CR out of total enrollments.

Retention Rate: The percentage of students who complete a course with a grade of A,B,C,D,F,CR,NC,I out of total enrollments.

Skyline College Success and Retention of Concurrently Enrolled Students by High School of Origin

		Headcount Total	Success Count	Success Rate	Retention Count	Retention Rate
Fall 2003	Jefferson	6	3	50%	3	50%
	Oceana	8	5	63%	6	75%
	Terra Nova	11	9	82%	10	91%
	Westmoor	5	4	80%	4	80%
	Total	30	21	70%	23	77%
Fall 2004	Jefferson	4	2	50%	3	75%
	Oceana	7	6	86%	7	100%
	Terra Nova	11	9	82%	11	100%
	Westmoor	6	2	33%	6	100%
	Total	28	19	68%	27	96%
Fall 2005	Jefferson	2	2	100%	2	100%
	Oceana	1				
	Terra Nova	12	9	75%	11	92%
	Westmoor	1				
	Total	16	11	69%	13	81%
Fall 2006	Jefferson	58	48	83%	50	86%
	Oceana	25	24	96%	25	100%
	Terra Nova	5	4	80%	4	80%
	Westmoor	94	61	65%	65	69%
	Total	182	137	75%	144	79%
Fall 2007	Jefferson	34	26	76%	29	85%
	Oceana	36	24	67%	25	69%
	Terra Nova	13	10	77%	12	92%
	Westmoor	47	39	83%	43	91%
	Total	130	99	76%	109	84%

Data Source: SMCCCD Data Warehouse

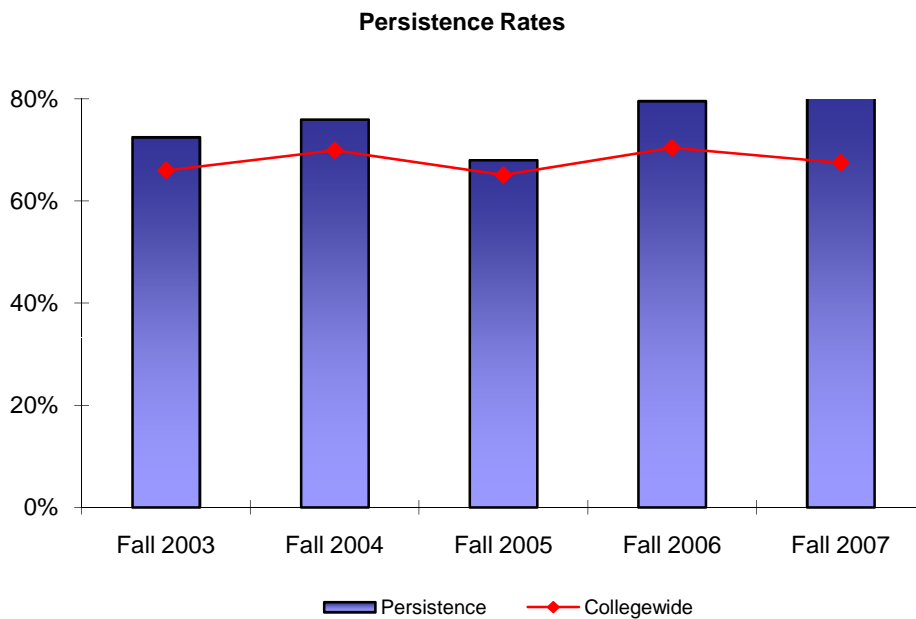
Note: No first-time freshman students from Thornton High School in the fall semesters.

Success Rate: The percentage of students who complete a course with a grade of A,B,C,CR out of total enrollments.

Retention Rate: The percentage of students who complete a course with a grade of A,B,C,D,F,CR,NC,I out of total enrollments.

Skyline College
Fall to Spring Persistence of First-Time Freshmen
from Jefferson Union High School District

Cohort	Fall	Spring	Persistence	Collegewide
Fall 2003	189	137	72.5%	66.0%
Fall 2004	154	117	76.0%	69.9%
Fall 2005	247	168	68.0%	65.1%
Fall 2006	137	109	79.6%	70.4%
Fall 2007	164	132	80.5%	67.5%
Average			74.4%	67.8%



Note: Each fall cohort consists of students enrolled in at least one course that fall term with an A, B, C, D, F, CR, NC, W, or I grade notation. Persistence rates are a percentage of each cohort who enrolled in at least one course the following spring with an A, B, C, D, F, CR, NC, W, or I grade notation.

Source: SMCCCD Data Warehouse