

Speech Department Student Characteristics 2006/07 through 2010/11

Unique Headcount by Term

FA06	FA07	FA08	FA09	FA10	SP07	SP08	SP09	SP10	SP11	SU06	SU07	SU08	SU09	SU10
515	605	610	702	659	600	531	622	627	669	285	256	231	294	213

Unique Headcount by Gender

	2006/07		2007/08		2008/09		2009/10		2010/11		Change 09/10-10/11	5 Year Row Total & Average	
Female	733	53%	704	51%	750	52%	804	50%	735	49%	-9%	3,726	51%
Male	598	45%	611	47%	636	46%	730	48%	738	50%	1%	3,313	47%
Unreported	24	2%	31	2%	26	2%	30	2%	17	1%	-43%	128	2%
Column Total	1,355	100%	1,346	100%	1,412	100%	1,564	100%	1,490	100%	-5%	7,167	100%

Unique Headcount by Ethnicity

	2006/07		2007/08		2008/09		2009/10		2010/11		Change 09/10-10/11	5 Year Row Total & Average	
African American	48	4%	68	6%	89	7%	85	6%	63	4%	-26%	353	5%
Asian	364	27%	357	26%	346	24%	400	25%	376	25%	-6%	1,843	25%
Filipino	304	22%	289	20%	305	22%	331	22%	294	20%	-11%	1,523	21%
Hispanic	229	17%	250	19%	262	18%	260	16%	271	17%	4%	1,272	17%
White	269	20%	231	17%	247	17%	280	17%	248	16%	-11%	1,275	17%
Other	48	4%	29	2%	5	0%	5	0%			-100%	87	1%
Unknown	93	7%	122	10%	158	12%	203	14%	238	17%	17%	814	12%
Column Total	1,355	100%	1,346	100%	1,412	100%	1,564	100%	1,490	100%	-5%	7,167	100%

Unqie Headcount by Age

	2006/07		2007/08		2008/09		2009/10		2010/11		Change 09/10-10/11	5 Year Row Total & Average	
Under 18	21	2%	31	3%	18	2%	29	2%	15	1%	-48%	114	2%
Age 18-22	845	65%	869	68%	888	69%	1,022	72%	1,017	75%	-0%	4,641	71%
Age 23-28	290	21%	264	18%	307	18%	298	15%	283	15%	-5%	1,442	17%
Age 29-39	134	9%	114	7%	138	8%	149	8%	127	6%	-15%	662	8%
Age 40-49	48	2%	54	3%	45	2%	45	2%	40	2%	-11%	232	2%
Age 50-59	18	1%	16	1%	18	1%	19	1%	11	0%	-42%	82	1%
Age 60+	3	0%	3	0%			6	0%	2	0%	-67%	14	0%
Column Total	1,359	100%	1,351	100%	1,414	100%	1,568	100%	1,495	100%	-5%	7,187	100%

Source: SMCCCD Data Warehouse

*Note: Counts and percents are based on census figures.

**Note: The variations in total numbers each year within the demographic segments are due to missing data points, and, in the case of age, also due to students crossing a category threshold during a year (18-22 in Fall, 23-28 in Spring).

Unique Headcount by Status

	2006/07		2007/08		2008/09		2009/10		2010/11		Change 09/10-10/11	5 Year Row Total & Average
Continuing	1,000	73%	988	68%	1,083	75%	1,186	76%	1,163	78%	-2%	5,420 75%
Currently K-12	7	1%	11	1%	10	1%	15	1%	4	0%	-73%	47 1%
First-Time	97	8%	86	9%	78	7%	72	6%	92	7%	28%	425 7%
First-Time Transfer	110	9%	121	13%	98	9%	130	10%	111	8%	-15%	570 10%
Returning	80	6%	87	5%	76	4%	104	5%	77	4%	-26%	424 5%
Returning Transfer	71	4%	60	3%	73	3%	67	3%	48	2%	-28%	319 3%
Column Total	1,365	100%	1,353	100%	1,418	100%	1,574	100%	1,495	100%	-5%	7,205 100%

Unique Headcount by Course-Taking Pattern (Fall and Spring only)

	2006/07		2007/08		2008/09		2009/10		2010/11		Change 09/10-10/11	5 Year Row Total & Average
Day	940	70%	905	70%	955	71%	1,058	70%	966	67%	-9%	4,824 70%
Day and Evening	2	0%	3	0%	1	0%	3	0%	3	0%	0%	12 0%
Evening	430	30%	449	30%	464	29%	523	29%	541	32%	3%	2,407 30%
Column Total	1,372	100%	1,357	100%	1,420	100%	1,584	100%	1,510	100%	-5%	7,243 100%

Unique Headcount by Educational Goal

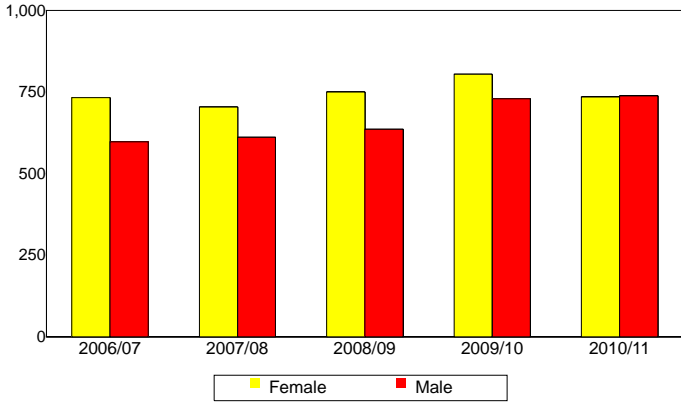
	2006/07		2007/08		2008/09		2009/10		2010/11		Change 09/10-10/11	5 Year Row Total & Average
Transfer	1,062	78%	765	57%	846	62%	982	65%	1,028	70%	5%	4,683 66%
AA/AS w/o Transfer	64	4%	47	3%	61	4%	64	4%	64	4%	0%	300 4%
Certificate w/o Transfer	9	0%	14	1%	15	1%	17	1%	11	0%	-35%	66 1%
Acquire/Update Job Skills	40	3%	46	3%	61	4%	81	5%	49	3%	-40%	277 4%
Complete HS Credits	3	0%	7	1%	13	1%	17	1%	11	1%	-35%	51 1%
Educational Development	57	4%	40	3%	31	2%	33	2%	41	3%	24%	202 3%
Formulate Career Plans/G	1	0%	8	1%	8	1%	24	2%	12	1%	-50%	53 1%
Improve Basic Skills	2	0%	6	1%	8	1%	15	1%	10	1%	-33%	41 1%
Maintain Certificate/Licens	1	0%	1	0%	4	0%	5	0%	2	0%	-60%	13 0%
Undecided/Unreported	120	9%	420	30%	367	25%	332	20%	264	18%	-20%	1,503 21%
Column Total	1,359	100%	1,354	100%	1,414	100%	1,570	100%	1,492	100%	-5%	7,189 100%

Source: SMCCCD Data Warehouse

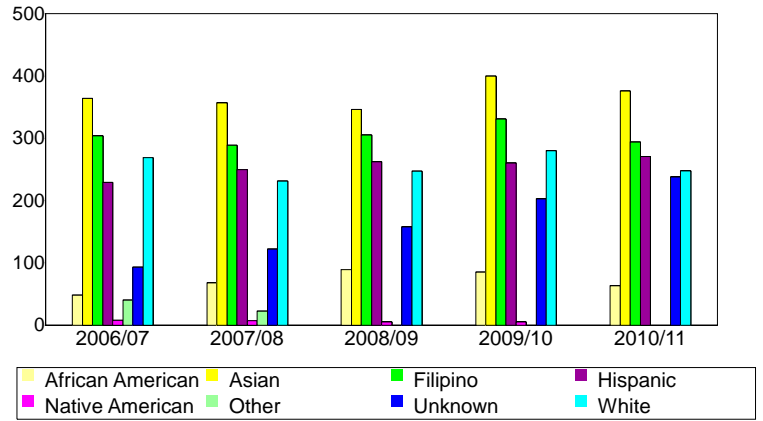
*Note: Counts and percents are based on census figures for summer, fall and spring.

**Note: The variations in total numbers each year within the Status, Course-Taking, and Educational Goal tables are due to missing data points and also due to students changing Status, Pattern, or Educational Goal within a given year - e.g. "First Time Student" in Fall and "Continuing Student" in Spring.

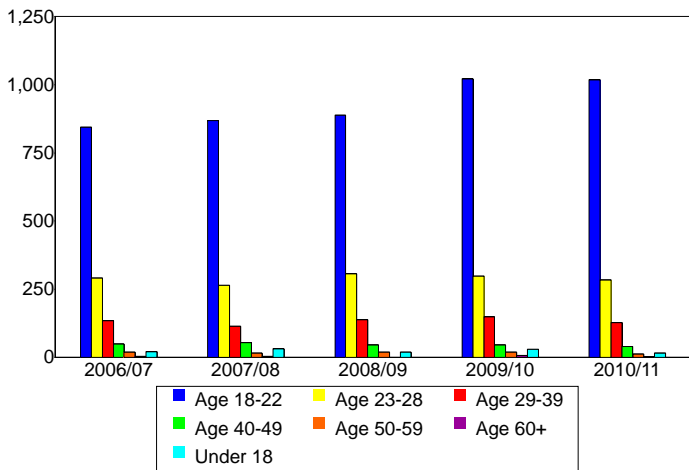
Unique Headcount by Gender



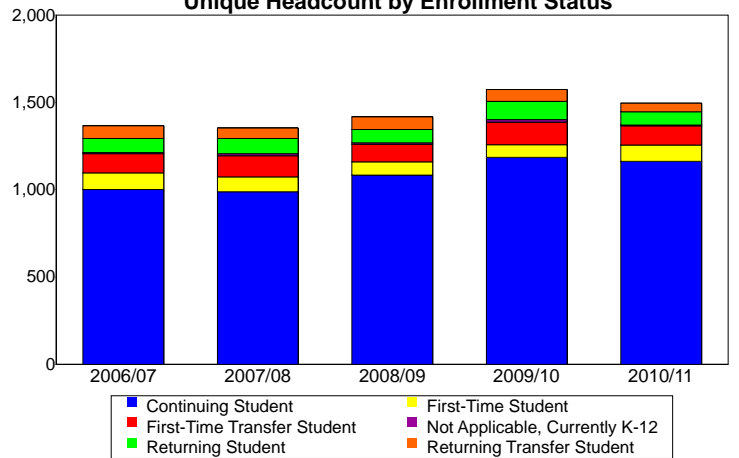
Unique Headcount by Ethnicity



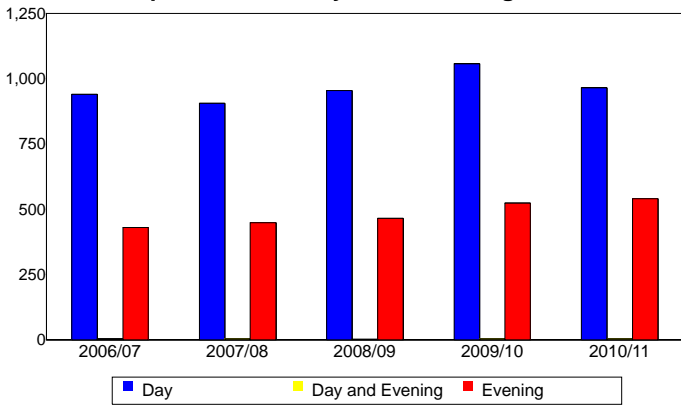
Unique Headcount by Student Age



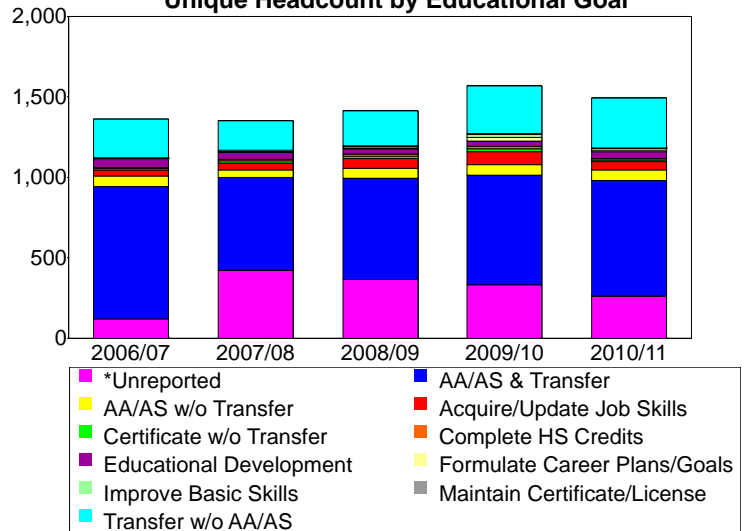
Unique Headcount by Enrollment Status



Unique Headcount by Course-Taking Pattern



Unique Headcount by Educational Goal



Source: SMCCCD Data Warehouse