

Sociology Department Student Characteristics 2006/07 through 2010/11

Unique Headcount by Term

FA06	FA07	FA08	FA09	FA10	SP07	SP08	SP09	SP10	SP11	SU06	SU07	SU08	SU09	SU10
164	174	205	322	310	154	214	253	329	378	98	98	108	128	131

Unique Headcount by Gender

	2006/07		2007/08		2008/09		2009/10		2010/11		Change 09/10-10/11	5 Year Row Total & Average	
Female	249	62%	290	63%	332	61%	462	61%	469	60%	2%	1,802	61%
Male	149	37%	168	35%	196	37%	276	37%	301	39%	9%	1,090	37%
Unreported	5	1%	10	2%	12	2%	13	2%	11	1%	-15%	51	2%
Column Total	403	100%	468	100%	540	100%	751	100%	781	100%	4%	2,943	100%

Unique Headcount by Ethnicity

	2006/07		2007/08		2008/09		2009/10		2010/11		Change 09/10-10/11	5 Year Row Total & Average	
African American	14	3%	31	7%	22	4%	39	6%	29	4%	-26%	135	5%
Asian	104	27%	107	25%	129	25%	191	25%	181	22%	-5%	712	24%
Filipino	106	26%	138	31%	171	32%	173	23%	185	25%	7%	773	27%
Hispanic	66	17%	71	13%	88	16%	129	17%	130	17%	1%	484	16%
White	66	16%	70	13%	76	13%	128	16%	121	16%	-5%	461	15%
Other	18	5%	6	1%	1	0%	1	0%	2	0%	100%	28	1%
Unknown	29	8%	45	10%	53	10%	90	13%	133	16%	48%	350	13%
Column Total	403	100%	468	100%	540	100%	751	100%	781	100%	4%	2,943	100%

Unqie Headcount by Age

	2006/07		2007/08		2008/09		2009/10		2010/11		Change 09/10-10/11	5 Year Row Total & Average	
Under 18	12	3%	10	3%	12	3%	10	2%	8	1%	-20%	52	2%
Age 18-22	259	67%	316	71%	369	75%	464	70%	509	73%	10%	1,917	72%
Age 23-28	75	18%	85	17%	92	13%	154	18%	151	16%	-2%	557	16%
Age 29-39	41	9%	35	6%	53	8%	79	7%	76	7%	-4%	284	7%
Age 40-49	12	1%	16	2%	9	1%	33	2%	30	2%	-9%	100	2%
Age 50-59	4	1%	6	0%	5	0%	10	1%	8	1%	-20%	33	1%
Age 60+			2	0%			2	0%	1	0%	-50%	5	0%
Column Total	403	100%	470	100%	540	100%	752	100%	783	100%	4%	2,948	100%

Source: SMCCCD Data Warehouse

*Note: Counts and percents are based on census figures.

**Note: The variations in total numbers each year within the demographic segments are due to missing data points, and, in the case of age, also due to students crossing a category threshold during a year (18-22 in Fall, 23-28 in Spring).

Unique Headcount by Status

	2006/07		2007/08		2008/09		2009/10		2010/11		Change 09/10-10/11	5 Year Row Total & Average
Continuing	254	62%	325	63%	408	73%	515	67%	583	75%	13%	2,085 70%
Currently K-12	6	2%	8	2%	9	2%	9	1%	6	1%	-33%	38 2%
First-Time	33	8%	29	9%	28	7%	58	9%	36	5%	-38%	184 7%
First-Time Transfer	53	15%	52	16%	36	9%	80	13%	73	10%	-9%	294 12%
Returning	43	10%	33	5%	35	5%	49	5%	53	5%	8%	213 6%
Returning Transfer	18	4%	23	4%	30	4%	46	4%	35	3%	-24%	152 4%
Column Total	407	100%	470	100%	546	100%	757	100%	786	100%	4%	2,966 100%

Unique Headcount by Course-Taking Pattern (Fall and Spring only)

	2006/07		2007/08		2008/09		2009/10		2010/11		Change 09/10-10/11	5 Year Row Total & Average
Day	277	69%	330	73%	368	73%	458	64%	488	66%	7%	1,921 68%
Day and Evening			1	0%	4	1%	2	0%	3	0%	50%	10 0%
Evening	131	31%	143	27%	176	27%	295	36%	298	34%	1%	1,043 32%
Column Total	408	100%	474	100%	548	100%	755	100%	789	100%	5%	2,974 100%

Unique Headcount by Educational Goal

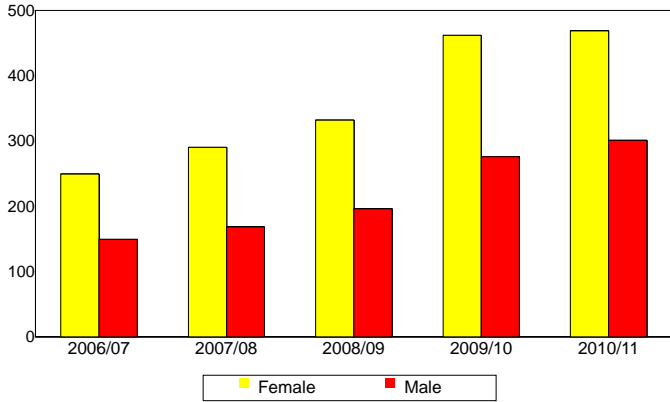
	2006/07		2007/08		2008/09		2009/10		2010/11		Change 09/10-10/11	5 Year Row Total & Average
Transfer	297	72%	263	54%	304	58%	417	57%	492	64%	18%	1,773 61%
AA/AS w/o Transfer	21	5%	21	4%	28	5%	32	4%	29	3%	-9%	131 4%
Certificate w/o Transfer	2	1%	2	0%	4	1%	6	1%	5	1%	-17%	19 1%
Acquire/Update Job Skills	14	4%	19	4%	22	3%	46	5%	47	5%	2%	148 4%
Complete HS Credits	2	1%	2	1%	7	2%	4	1%	7	1%	75%	22 1%
Educational Development	22	6%	13	3%	12	2%	14	2%	23	3%	64%	84 3%
Formulate Career Plans/Goals			1	0%	5	1%	14	2%	12	2%	-14%	32 1%
Improve Basic Skills			1	0%	2	1%	7	1%	3	0%	-57%	13 1%
Maintain Certificate/Licensure			2	1%			5	1%	5	1%	0%	12 0%
Undecided/Unreported	46	12%	148	34%	160	28%	209	28%	159	21%	-24%	722 25%
Column Total	404	100%	472	100%	544	100%	754	100%	782	100%	4%	2,956 100%

Source: SMCCCD Data Warehouse

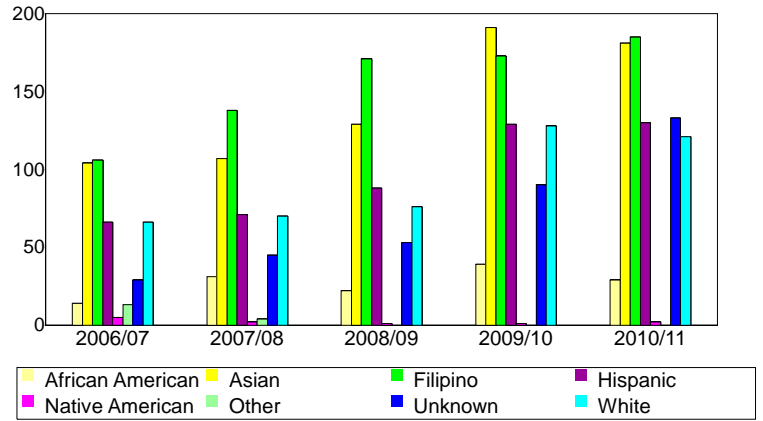
*Note: Counts and percents are based on census figures for summer, fall and spring.

**Note: The variations in total numbers each year within the Status, Course-Taking, and Educational Goal tables are due to missing data points and also due to students changing Status, Pattern, or Educational Goal within a given year - e.g. "First Time Student" in Fall and "Continuing Student" in Spring.

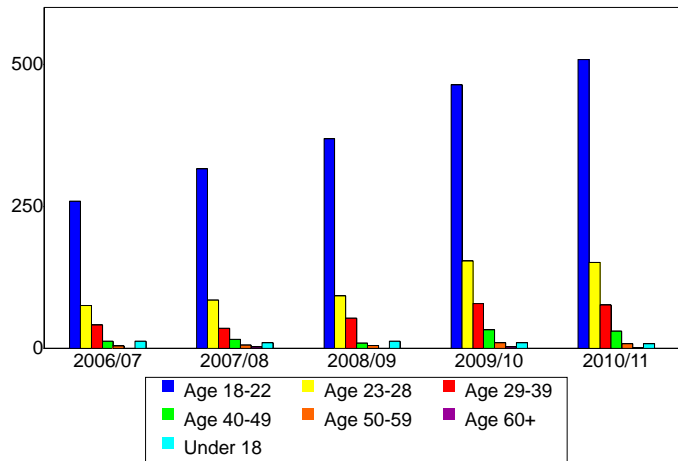
Unique Headcount by Gender



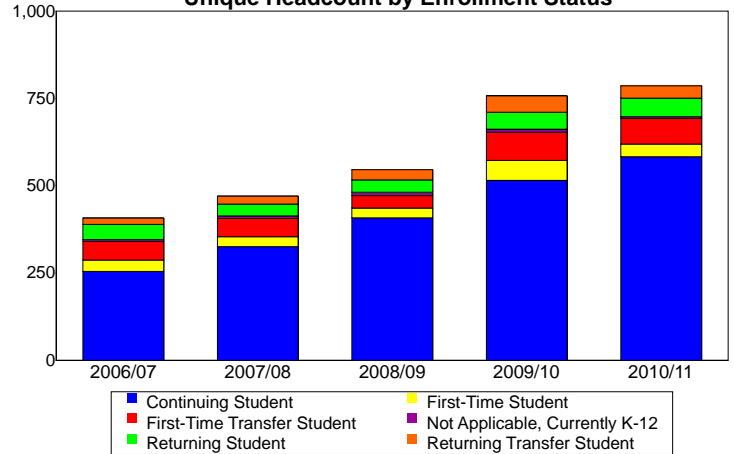
Unique Headcount by Ethnicity



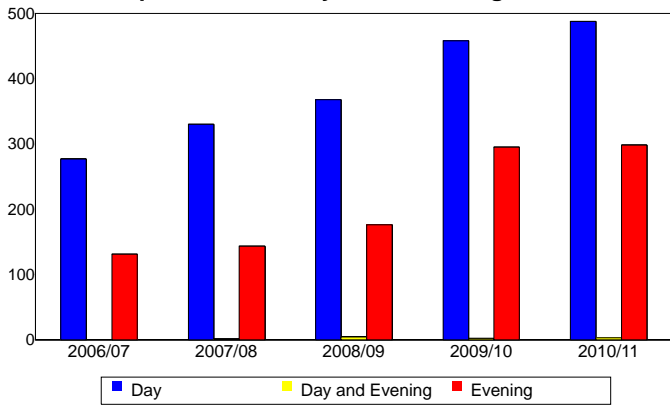
Unique Headcount by Student Age



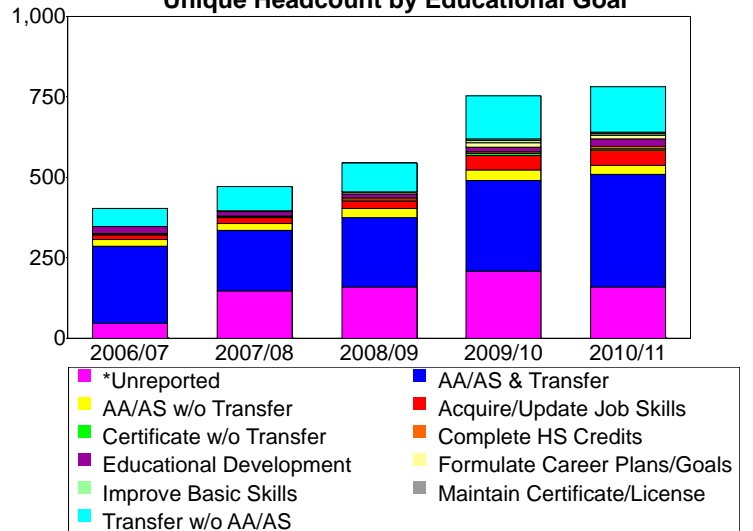
Unique Headcount by Enrollment Status



Unique Headcount by Course-Taking Pattern



Unique Headcount by Educational Goal



Source: SMCCCD Data Warehouse