

Respiratory Therapy Department Student Characteristics 2006/07 through 2010/11

Unique Headcount by Term

FA06	FA07	FA08	FA09	FA10	SP07	SP08	SP09	SP10	SP11	SU06	SU07	SU08	SU09	SU10
50	48	46	50	50	50	40	45	46	43	27	22	18	25	21

Unique Headcount by Gender

	2006/07		2007/08		2008/09		2009/10		2010/11		Change 09/10-10/11	5 Year Row Total & Average	
Female	34	62%	27	52%	26	55%	29	54%	23	47%	-21%	139	54%
Male	18	38%	23	48%	22	45%	23	43%	26	48%	13%	112	44%
Unreported							1	3%	2	5%	100%	3	2%
Column Total	52	100%	50	100%	48	100%	53	100%	51	100%	-4%	254	100%

Unique Headcount by Ethnicity

	2006/07		2007/08		2008/09		2009/10		2010/11		Change 09/10-10/11	5 Year Row Total & Average	
African American	4	6%	3	6%	5	13%	5	10%	1	0%	-80%	18	7%
Asian	12	28%	10	21%	12	22%	16	29%	19	38%	19%	69	29%
Filipino	18	35%	21	42%	19	40%	16	32%	13	26%	-19%	87	34%
Hispanic	4	8%	3	8%	3	7%	5	5%	7	13%	40%	22	8%
White	13	21%	12	20%	7	14%	9	18%	7	12%	-22%	48	17%
Unknown	1	2%	1	3%	2	5%	2	5%	4	10%	100%	10	5%
Column Total	52	100%	50	100%	48	100%	53	100%	51	100%	-4%	254	100%

Unqie Headcount by Age

	2006/07		2007/08		2008/09		2009/10		2010/11		Change 09/10-10/11	5 Year Row Total & Average	
Under 18							1	3%	2	5%	100%	3	2%
Age 18-22	7	16%	9	13%	5	7%	6	12%	6	7%	0%	33	11%
Age 23-28	17	36%	21	44%	24	47%	22	40%	26	46%	18%	110	43%
Age 29-39	18	29%	13	22%	14	28%	20	39%	17	33%	-15%	82	31%
Age 40-49	13	20%	11	21%	9	18%	5	6%	5	8%	0%	43	14%
Age 50-59	1	0%			1	0%	2	0%	2	0%	0%	6	0%
Column Total	56	100%	54	100%	53	100%	56	100%	58	100%	4%	277	100%

Source: SMCCCD Data Warehouse

*Note: Counts and percents are based on census figures.

**Note: The variations in total numbers each year within the demographic segments are due to missing data points, and, in the case of age, also due to students crossing a category threshold during a year (18-22 in Fall, 23-28 in Spring).

Unique Headcount by Status

	2006/07		2007/08		2008/09		2009/10		2010/11		Change 09/10-10/11	5 Year Row Total & Average	
Continuing	51	95%	47	90%	45	89%	48	90%	49	85%	2%	240	90%
Currently K-12									1	1%		1	0%
First-Time Transfer	2	2%	6	9%	5	7%	2	2%	6	8%	200%	21	5%
Returning	3	3%	1	1%	6	4%	8	7%	5	4%	-38%	23	4%
Returning Transfer							2	1%	4	2%	100%	5	1%
Column Total	56	100%	54	100%	56	100%	60	100%	65	100%	8%	291	100%

Unique Headcount by Course-Taking Pattern (Fall and Spring only)

	2006/07		2007/08		2008/09		2009/10		2010/11		Change 09/10-10/11	5 Year Row Total & Average	
Day	52	100%	50	100%	48	100%	53	100%	51	100%	-4%	254	100%
Column Total	52	100%	50	100%	48	100%	53	100%	51	100%	-4%	254	100%

Unique Headcount by Educational Goal

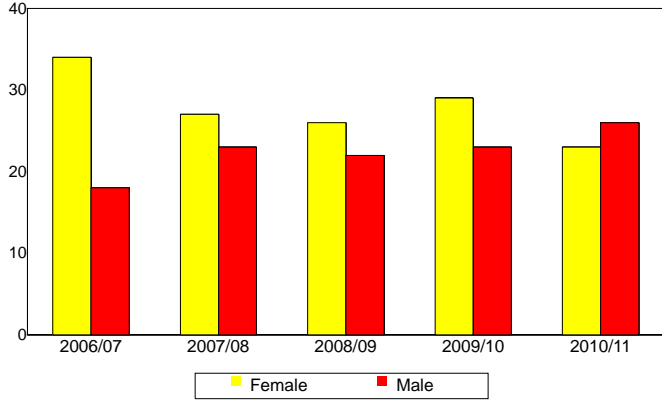
	2006/07		2007/08		2008/09		2009/10		2010/11		Change 09/10-10/11	5 Year Row Total & Average	
Transfer	31	62%	20	31%	16	30%	12	24%	13	23%	8%	92	33%
AA/AS w/o Transfer	18	31%	15	32%	17	31%	22	43%	13	29%	-41%	85	33%
Certificate w/o Transfer	4	4%	3	6%	5	9%	5	7%	10	16%	100%	27	9%
Acquire/Update Job Skills			3	6%	4	13%	6	9%	8	14%	33%	21	9%
Maintain Certificate/Licens			1	2%	1	3%						2	1%
Undecided/Unreported	3	4%	16	23%	10	15%	10	18%	11	19%	10%	50	16%
Column Total	56	100%	58	100%	53	100%	55	100%	55	100%	0%	277	100%

Source: SMCCCD Data Warehouse

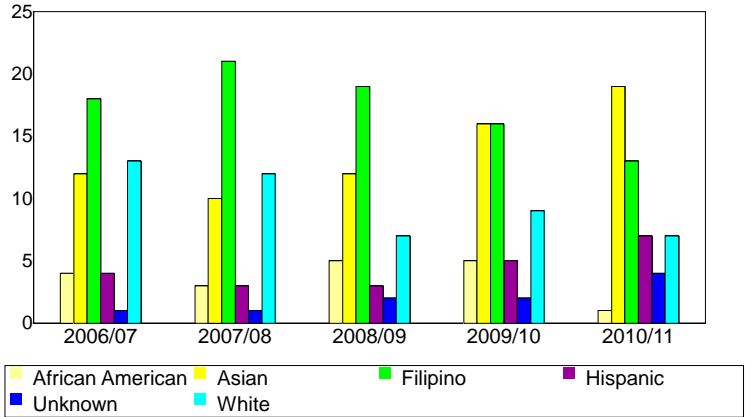
*Note: Counts and percents are based on census figures for summer, fall and spring.

**Note: The variations in total numbers each year within the Status, Course-Taking, and Educational Goal tables are due to missing data points and also due to students changing Status, Pattern, or Educational Goal within a given year - e.g. "First Time Student" in Fall and "Continuing Student" in Spring.

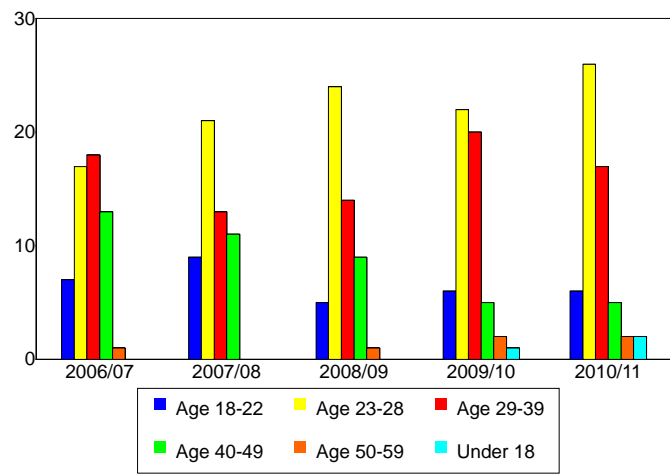
Unique Headcount by Gender



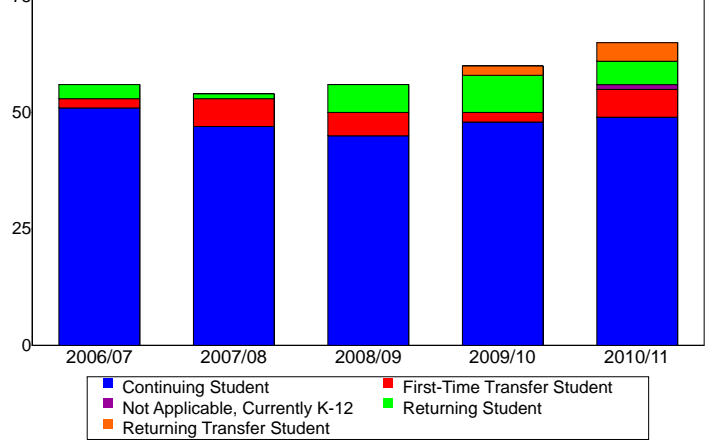
Unique Headcount by Ethnicity



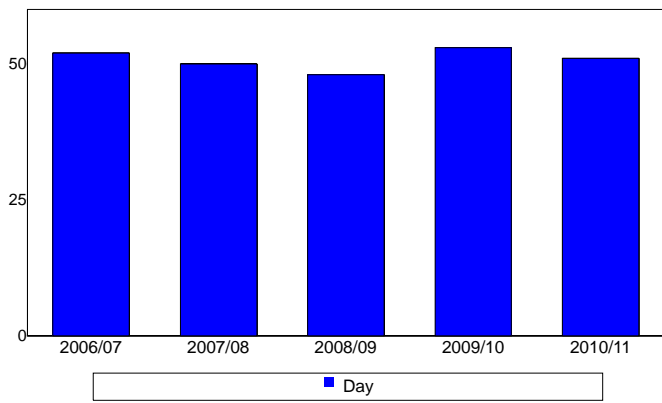
Unique Headcount by Student Age



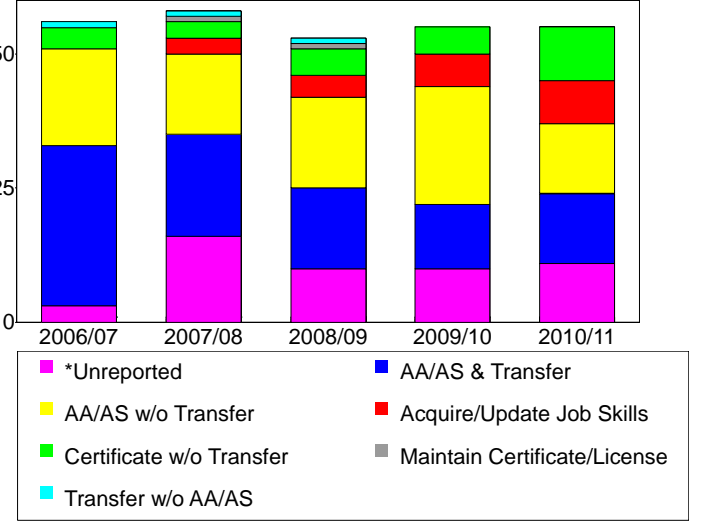
Unique Headcount by Enrollment Status



Unique Headcount by Course-Taking Pattern



Unique Headcount by Educational Goal



Source: SMCCCD Data Warehouse