

## Respiratory Therapy Productivity: By Year and By Term 2006/07 through 2010/11

	Census Headcount	End of Term Headcount	FTEF	FTES	WSCH	Load	Sections	Max Enroll
2006/07	454	447	4.58	<b>98.65</b>	2,959	647	21	482
2007/08	387	377	4.07	<b>73.13</b>	2,194	539	20	478
2008/09	387	386	3.91	<b>71.29</b>	2,139	547	19	471
2009/10	429	421	3.82	<b>79.31</b>	2,379	623	21	491
2010/11	391	388	3.43	<b>72.87</b>	2,186	637	18	458

	Census Headcount	End of Term Headcount	FTEF	FTES	WSCH	Load	Sections	Max Enroll
Fall 2006	199	195	2.54	<b>47.06</b>	1,412	555	9	212
Fall 2007	183	176	2.03	<b>31.91</b>	957	472	9	223
Fall 2008	181	181	1.87	<b>30.16</b>	905	485	8	216
Fall 2009	197	189	1.87	<b>36.34</b>	1,090	584	9	234
Fall 2010	185	182	1.93	<b>31.21</b>	936	484	8	209
Spring 2007	228	225	1.69	<b>45.41</b>	1,362	808	9	225
Spring 2008	183	180	1.75	<b>36.42</b>	1,093	623	9	225
Spring 2009	188	188	1.75	<b>38.85</b>	1,165	665	9	225
Spring 2010	207	207	1.82	<b>40.45</b>	1,214	667	9	225
Spring 2011	186	186	1.50	<b>37.09</b>	1,113	742	9	225
Summer 2006	27	27	0.35	<b>6.17</b>	185	534	3	45
Summer 2007	21	21	0.29	<b>4.80</b>	144	491	2	30
Summer 2008	18	17	0.29	<b>2.29</b>	69	234	2	30
Summer 2009	25	25	0.13	<b>2.51</b>	75	566	3	32
Summer 2010	20	20	0.00	<b>4.57</b>	137	#INF	1	24

Source: SMCCCD Data Warehouse

Census Headcount: Number of duplicated headcount at final census.

End of Term Headcount: Number of duplicated headcount at the end of the term.

FTEF: Total number of full time equivalent faculty assigned.

FTES: Total number of full time equivalent students enrolled at first census.

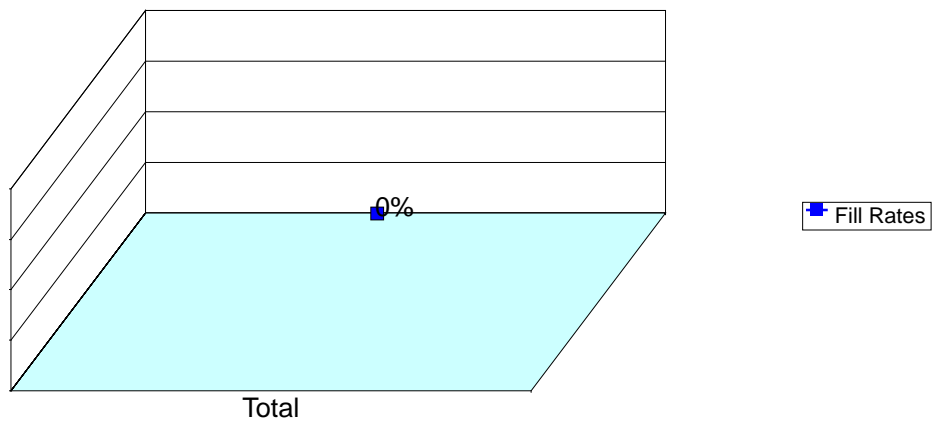
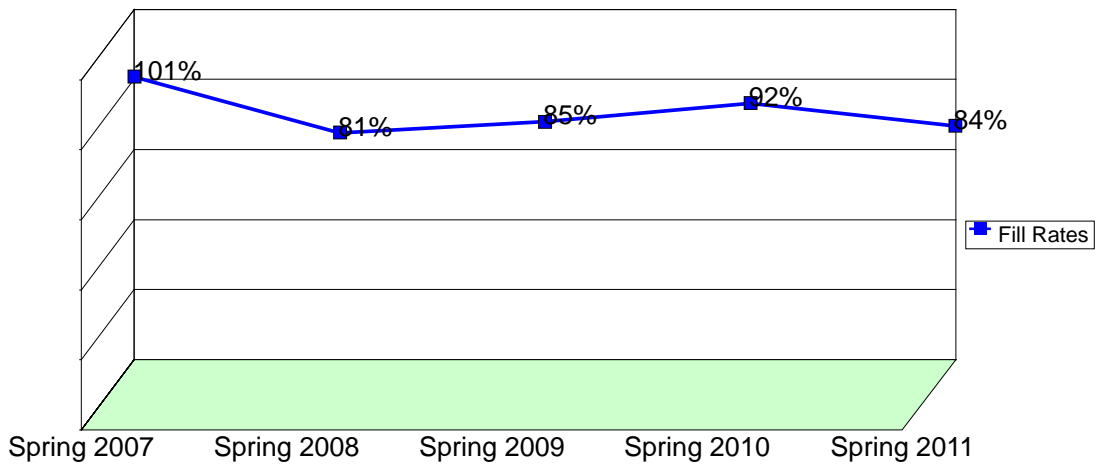
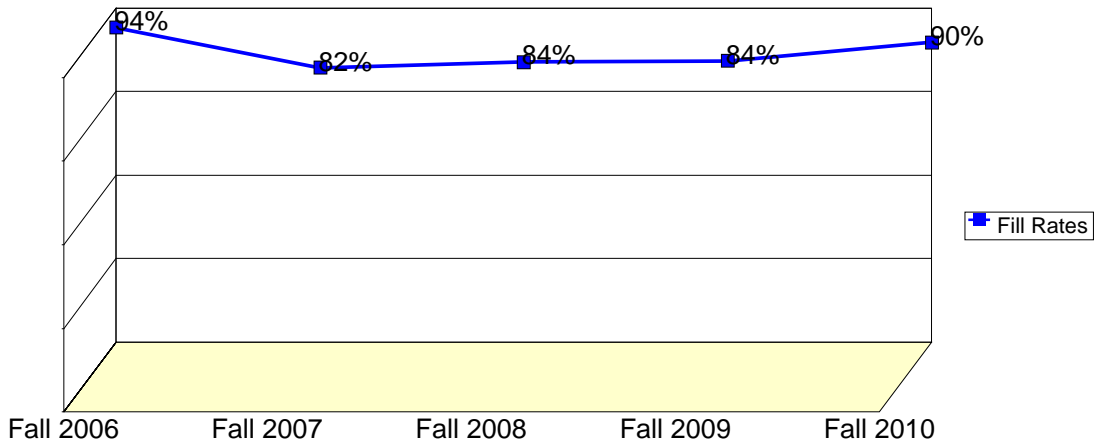
WSCH: Weekly student contact hours generated by census enrollments.

Load: The ratio of WSCH to FTEF, used to measure productivity.

Sections: Total number of sections offered per semester.

Max Enroll: The enrollment capacity or maximum enrollment as defined in curriculum.

## Department Fill Rates by Term



Source: SMCCCD Data Warehouse

Fill Rates: The percent a class fills/enrolls based on capacity or enrollment maximum defined in the curriculum (does not include positive attendance or open entry/open exit classes).

## Department Productivity: Term by Course

				Census Headcount	End of Term Headcount	FTEF	FTES	WSCH	Load	Sections	Max Enroll
<b>Fall 2006</b>	RPTH	400	Patient & Health Care Concerns	24	23	0.13	1.60	48	360	1	28
		410	Patient Care/Resp. Assessment	24	23	0.30	4.00	120	404	1	28
		420	Application of Cardiopulmonary	24	23	0.20	2.40	72	360	1	28
		450	Respiratory Diseases II	26	26	0.20	2.38	71	357	1	25
		458	Clinical Clerkship III	26	26	0.91	26.15	784	859	1	25
		460	Respiratory Critical Care	26	26	0.52	7.03	211	406	2	28
		484	Medical Terminology for RPTH	23	22	0.13	1.52	46	343	1	25
		490	Neonatal/Pediatric/Rehab. Care	26	26	0.15	1.98	59	405	1	25
<b>Fall 2007</b>	RPTH	400	Patient & Health Care Concerns	24	23	0.13	1.60	48	360	1	28
		410	Patient Care/Resp. Assessment	25	23	0.29	4.17	125	426	1	28
		420	Application of Cardiopulmonary	25	23	0.20	2.50	75	375	1	28
		450	Respiratory Diseases II	21	21	0.20	2.04	61	306	1	25
		458	Clinical Clerkship III	21	21	0.40	13.44	403	1,008	1	25
		460	Respiratory Critical Care	21	21	0.52	4.73	142	273	2	39
		484	Medical Terminology for RPTH	23	22	0.13	1.53	46	345	1	25
		490	Neonatal/Pediatric/Rehab. Care	23	22	0.15	1.89	57	387	1	25
<b>Fall 2008</b>	RPTH	400	Patient & Health Care Concerns	27	27	0.13	1.80	54	405	1	30
		410	Patient Care/Resp. Assessment	28	28	0.29	4.67	140	477	1	28
		420	Application of Cardiopulmonary	28	28	0.20	2.80	84	420	1	30
		450	Respiratory Diseases II	18	18	0.20	1.85	56	278	1	25
		458	Clinical Clerkship III	18	18	0.40	11.46	344	860	1	25
		460	Respiratory Critical Care	18	18	0.36	4.47	134	373	1	25
		484	Medical Terminology for RPTH	26	26	0.13	1.73	52	390	1	28
		490	Neonatal/Pediatric/Rehab. Care	18	18	0.15	1.37	41	280	1	25
<b>Fall 2009</b>	RPTH	400	Patient & Health Care Concerns	25	23	0.13	1.67	50	375	1	28
		410	Patient Care/Resp. Assessment	26	24	0.29	5.20	156	532	1	28
		420	Application of Cardiopulmonary	26	24	0.20	2.60	78	390	1	28
		450	Respiratory Diseases II	24	24	0.20	2.33	70	350	1	25
		458	Clinical Clerkship III	24	24	0.40	15.36	461	1,152	1	25
		460	Respiratory Critical Care	24	24	0.36	5.53	166	461	2	50
		484	Medical Terminology for RPTH	24	22	0.13	1.60	48	360	1	25
		490	Neonatal/Pediatric/Rehab. Care	24	24	0.15	2.06	62	421	1	25
<b>Fall 2010</b>	RPTH	400	Patient & Health Care Concerns	27	26	0.13	1.80	54	405	1	28
		410	Patient Care/Resp. Assessment	27	26	0.29	4.50	135	460	1	28
		420	Application of Cardiopulmonary	27	26	0.20	2.70	81	405	1	28
		450	Respiratory Diseases II	20	20	0.20	1.94	58	291	1	25
		458	Clinical Clerkship III	20	20	0.47	12.80	384	823	1	25
		460	Respiratory Critical Care	20	20	0.36	4.34	130	362	1	25
		484	Medical Terminology for RPTH	24	24	0.13	1.60	48	360	1	25
		490	Neonatal/Pediatric/Rehab. Care	20	20	0.15	1.52	46	312	1	25
<b>Spring 2007</b>	RPTH	430	Respiratory Therapeutics	24	23	0.59	8.80	264	450	1	25
		438	Clinical Clerkship I	24	23	0.13	7.20	216	1,620	1	25
		445	Respiratory Diseases I	24	23	0.13	1.60	48	360	1	25
		475	Hemodynamic Monitoring	26	26	0.13	1.73	52	390	1	25
		480	Pulmonary Function Testing	26	26	0.13	1.73	52	390	1	25
		485	Clinical Medicine Seminar	26	26	0.13	1.73	52	390	1	25
		488	Clinical Clerkship IV	26	26	0.30	19.15	574	1,915	1	25

				Census Headcount	End of Term Headcount	FTEF	FTES	WSCH	Load	Sections	Max Enroll
		495	Resp Care Brd Exam Prep & Revw	26	26	0.13	1.73	52	390	1	25
		690	Special Project: Resp. Therapy	26	26	0.00	1.73	52	#INF	1	25
<b>Spring 2008</b>	RPTH	430	Respiratory Therapeutics	19	18	0.59	7.09	213	363	1	25
		438	Clinical Clerkship I	19	18	0.13	5.70	171	1,283	1	25
		445	Respiratory Diseases I	19	18	0.13	1.27	38	285	1	25
		475	Hemodynamic Monitoring	21	21	0.13	1.40	42	315	1	25
		480	Diagnostic Testing/Outpatient	21	21	0.13	1.40	42	315	1	25
		485	Clinical Medicine Seminar	21	21	0.13	1.40	42	315	1	25
		488	Clinical Clerkship IV	21	21	0.37	15.36	461	1,257	1	25
		495	Resp Care Brd Exam Prep & Revw	21	21	0.13	1.40	42	315	1	25
		690	Special Project: Resp. Therapy	21	21	0.00	1.40	42	#INF	1	25
		<b>Spring 2009</b>	RPTH	430	Respiratory Therapeutics	27	27	0.59	10.08	302	515
438	Clinical Clerkship I			26	26	0.13	7.80	234	1,755	1	25
445	Respiratory Diseases I			27	27	0.13	1.80	54	405	1	25
475	Hemodynamic Monitoring			18	18	0.13	1.20	36	270	1	25
480	Diagnostic Testing/Outpatient			18	18	0.13	1.20	36	270	1	25
485	Clinical Medicine Seminar			18	18	0.13	1.20	36	270	1	25
488	Clinical Clerkship IV			18	18	0.37	13.17	395	1,077	1	25
495	Resp Care Brd Exam Prep & Revw			18	18	0.13	1.20	36	270	1	25
690	Special Project: Resp. Therapy			18	18	0.00	1.20	36	#INF	1	25
<b>Spring 2010</b>	RPTH			430	Respiratory Therapeutics	21	21	0.59	7.42	223	379
		438	Clinical Clerkship I	21	21	0.13	5.60	168	1,260	1	25
		445	Respiratory Diseases I	21	21	0.13	1.40	42	315	1	25
		475	Hemodynamic Monitoring	24	24	0.13	1.60	48	360	1	25
		480	Diagnostic Testing/Outpatient	24	24	0.13	1.84	55	414	1	25
		485	Clinical Medicine Seminar	24	24	0.13	1.84	55	414	1	25
		488	Clinical Clerkship IV	24	24	0.43	17.55	527	1,215	1	25
		495	Resp Care Brd Exam Prep & Revw	24	24	0.13	1.60	48	360	1	25
		690	Special Project: Resp. Therapy	24	24	0.00	1.60	48	#INF	1	25
		<b>Spring 2011</b>	RPTH	430	Respiratory Therapeutics	24	24	0.59	8.48	254	434
438	Clinical Clerkship I			24	24	0.13	6.40	192	1,440	1	25
445	Respiratory Diseases I			24	24	0.13	1.60	48	360	1	25
475	Hemodynamic Monitoring			19	19	0.13	1.27	38	285	1	25
480	Diagnostic Testing/Outpatient			19	19	0.13	1.46	44	328	1	25
485	Clinical Medicine Seminar			19	19	0.11	1.46	44	385	1	25
488	Clinical Clerkship IV			19	19	0.13	13.90	417	3,125	1	25
495	Resp Care Brd Exam Prep & Revw			19	19	0.13	1.27	38	285	1	25
690	Special Project: Resp. Therapy			19	19	0.00	1.27	38	#INF	1	25
<b>Summer 2(</b>	RPTH			448	Clinical Clerkship II	27	27	0.35	6.17	185	534
<b>Summer 2(</b>	RPTH	448	Clinical Clerkship II	21	21	0.29	4.80	144	491	2	30
<b>Summer 2(</b>	RPTH	448	Clinical Clerkship II	18	17	0.29	2.29	69	234	2	30
<b>Summer 2(</b>	RPTH	448	Clinical Clerkship II	25	25	0.13	2.51	75	566	3	32
<b>Summer 2(</b>	RPTH	448	Clinical Clerkship II	20	20	0.00	4.57	137	#INF	1	24