

Physics Department Productivity: By Year and By Term 2006/07 through 2010/11

	Census Headcount	End of Term Headcount	FTEF	FTES	WSCH	Load	Sections	Max Enroll
2006/07	243	183	3.09	46.53	1,396	451	14	330
2007/08	261	204	3.20	49.42	1,483	463	14	307
2008/09	397	332	4.17	73.96	2,219	532	20	450
2009/10	443	378	4.56	90.98	2,729	599	22	500
2010/11	467	395	4.43	84.51	2,535	573	22	500

	Census Headcount	End of Term Headcount	FTEF	FTES	WSCH	Load	Sections	Max Enroll
Fall 2006	138	101	1.47	24.43	733	500	7	150
Fall 2007	119	94	1.47	20.30	609	415	7	132
Fall 2008	188	160	2.05	32.35	971	473	10	225
Fall 2009	229	192	2.44	47.01	1,410	578	12	275
Fall 2010	216	186	2.21	40.47	1,214	549	11	250
Spring 2007	105	82	1.63	22.10	663	408	7	180
Spring 2008	142	110	1.73	29.12	874	504	7	175
Spring 2009	209	172	2.12	41.61	1,248	589	10	225
Spring 2010	214	186	2.12	43.97	1,319	622	10	225
Spring 2011	251	209	2.21	44.03	1,321	597	11	250

Source: SMCCCD Data Warehouse

Census Headcount: Number of duplicated headcount at final census.

End of Term Headcount: Number of duplicated headcount at the end of the term.

FTEF: Total number of full time equivalent faculty assigned.

FTES: Total number of full time equivalent students enrolled at first census.

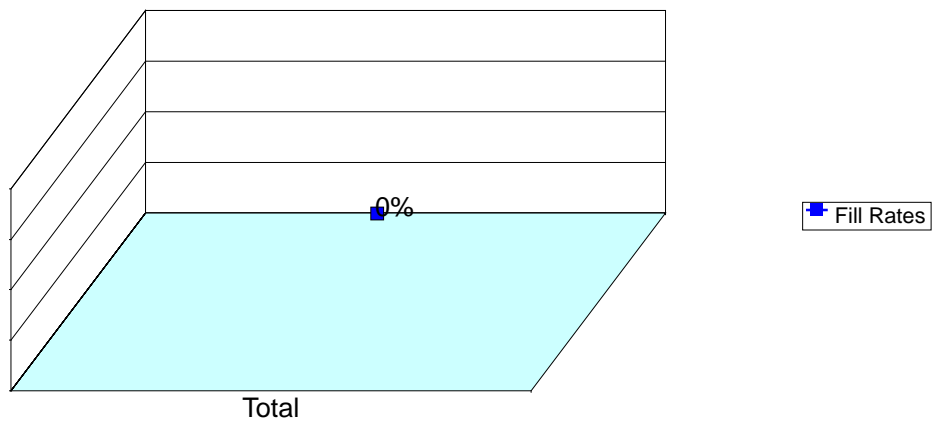
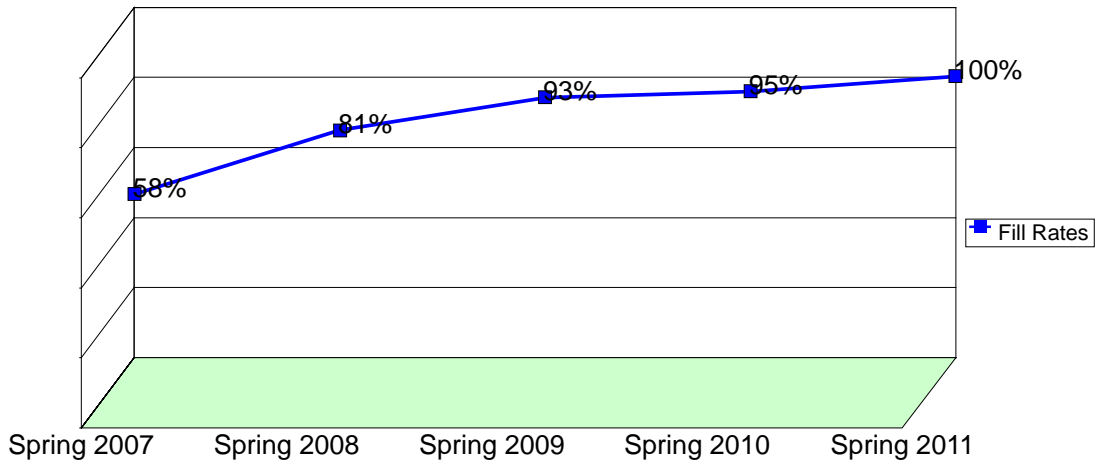
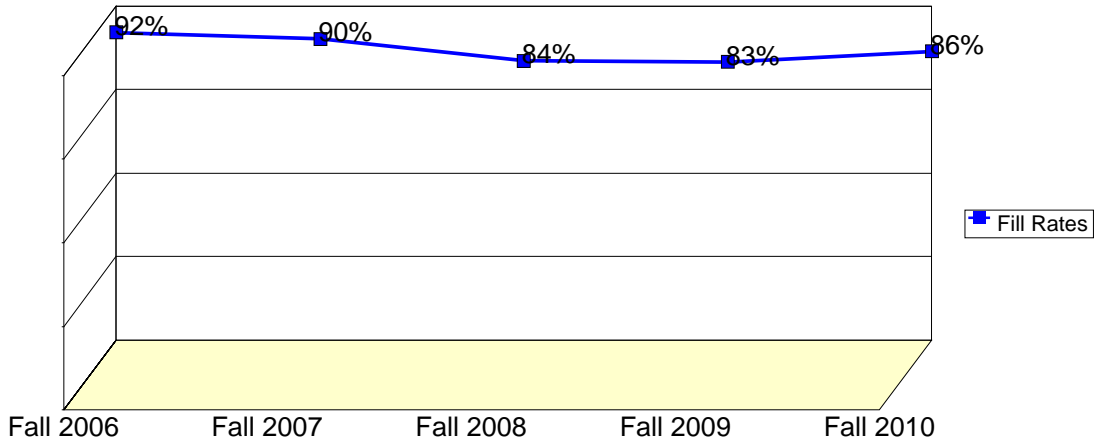
WSCH: Weekly student contact hours generated by census enrollments.

Load: The ratio of WSCH to FTEF, used to measure productivity.

Sections: Total number of sections offered per semester.

Max Enroll: The enrollment capacity or maximum enrollment as defined in curriculum.

Department Fill Rates by Term



Source: SMCCCD Data Warehouse

Fill Rates: The percent a class fills/enrolls based on capacity or enrollment maximum defined in the curriculum (does not include positive attendance or open entry/open exit classes).

Department Productivity: Term by Course

				Census	End of					Sections	Max
				Headcount	Term	FTEF	FTES	WSCH	Load		Enroll
Fall 2006	PHYS	210	General Physics I	50	38	0.52	10.00	300	577	2	50
		211	General Physics I-Calculus Sup	19	13	0.07	0.63	19	285	1	25
		250	Physics with Calculus I	42	24	0.52	8.40	252	485	2	50
		270	Physics with Calc. III-Honors	7	7	0.18	1.40	42	233	1	25
			Physics with Calculus III	20	19	0.18	4.00	120	667	1	25
Fall 2007	PHYS	210	General Physics I	45	33	0.52	9.00	270	519	2	40
		211	General Physics I-Calculus Sup	21	15	0.07	0.70	21	315	1	23
		250	Physics with Calculus I	28	22	0.52	5.60	168	323	2	46
		270	Physics with Calc. III-Honors	4	4	0.18	0.80	24	133	1	23
			Physics with Calculus III	21	20	0.18	4.20	126	700	1	23
Fall 2008	PHYS	210	General Physics I	71	59	0.68	14.45	434	637	3	75
		211	General Physics I-Calculus Sup	25	22	0.07	0.83	25	375	1	25
		220	General Physics II	19	16	0.36	3.80	114	317	1	25
		221	Gen Physics II Calculus Sup	8	7	0.07	0.27	8	120	1	25
		250	Physics with Calculus I	46	39	0.52	9.20	276	531	2	50
		270	Physics with Calc. III-Honors	7	7	0.18	1.40	42	233	1	25
			Physics with Calculus III	12	10	0.18	2.40	72	400	1	25
Fall 2009	PHYS	210	General Physics I	75	65	0.68	18.75	563	827	3	75
		211	General Physics I-Calculus Sup	15	14	0.07	0.50	15	225	1	25
		220	General Physics II	34	27	0.52	7.14	214	412	2	50
		221	Gen Physics II Calculus Sup	5	4	0.07	0.17	5	75	1	25
		250	Physics with Calculus I	55	39	0.52	11.00	330	635	2	50
		270	Physics with Calc. III-Honors	6	5	0.18	1.26	38	210	1	25
			Physics with Calculus III	39	38	0.41	8.19	246	604	2	50
Fall 2010	PHYS	210	General Physics I	80	68	0.68	16.28	488	718	3	75
		211	General Physics I-Calculus Sup	12	10	0.07	0.40	12	180	1	25
		220	General Physics II	35	30	0.52	7.16	215	413	2	50
		221	Gen Physics II Calculus Sup	7	5	0.07	0.23	7	105	1	25
		250	Physics with Calculus I	53	48	0.52	10.60	318	612	2	50
		270	Physics with Calc. III-Honors	14	14	0.18	2.80	84	467	1	25
			Physics with Calculus III	15	11	0.18	3.00	90	500	1	25
Spring 2007	PHYS	220	General Physics II	29	26	0.52	6.77	203	390	2	55
		221	Gen Physics II Calculus Sup	12	12	0.07	0.40	12	180	1	25
		250	Physics With Calculus I	19	14	0.26	4.43	133	512	1	25
			Physics with Calculus I	16	11	0.26	3.73	112	431	1	25
		260	Physics With Calculus II	16	9	0.26	3.73	112	431	1	25
Physics with Calculus II	13		10	0.26	3.03	91	350	1	25		
Spring 2008	PHYS	210	General Physics I	48	36	0.52	11.52	346	665	2	50
		211	General Physics I-Calculus Sup	6	6	0.07	0.20	6	90	1	25
		220	General Physics II	25	21	0.36	6.00	180	500	1	25
		221	Gen Physics II Calculus Sup	18	18	0.07	0.60	18	270	1	25
		250	Physics With Calculus I	19	14	0.36	4.56	137	380	1	25
		260	Physics with Calculus II	26	15	0.36	6.24	187	520	1	25
Spring 2009	PHYS	210	General Physics I	70	59	0.75	15.92	478	640	3	75
		211	General Physics I-Calculus Sup	10	7	0.07	0.33	10	150	1	25
		220	General Physics II	44	38	0.52	10.56	317	609	2	50
		221	Gen Physics II Calculus Sup	25	19	0.07	0.83	25	375	1	25

			Census Headcount	End of Term Headcount	FTEF	FTES	WSCH	Load	Sections	Max Enroll	
		250	Physics With Calculus I	27	24	0.36	6.48	194	540	1	25
		260	Physics With Calculus II	22	16	0.18	5.28	158	880	1	25
			Physics with Calculus II Honor	11	9	0.18	2.20	66	367	1	25
Spring 2010	PHYS	210	General Physics I	76	58	0.75	19.00	570	763	3	75
		211	General Physics I-Calculus Sup	11	11	0.07	0.37	11	165	1	25
		220	General Physics II	51	50	0.52	12.24	367	706	2	50
		221	Gen Physics II Calculus Sup	17	16	0.07	0.57	17	255	1	25
		250	Physics With Calculus I	29	24	0.36	5.80	174	483	1	25
		260	Physics with Calculus II	16	15	0.18	3.20	96	533	1	25
			Physics with Calculus II Honor	14	12	0.18	2.80	84	467	1	25
Spring 2011	PHYS	210	General Physics I	82	65	0.68	16.40	492	723	3	75
		211	General Physics I-Calculus Sup	21	20	0.07	0.70	21	315	1	25
		220	General Physics II	49	42	0.52	9.80	294	565	2	50
		221	Gen Physics II Calculus Sup	16	14	0.07	0.53	16	240	1	25
		250	Physics With Calculus I	30	23	0.36	6.00	180	500	1	25
		260	Physics With Calculus II	20	18	0.23	4.00	120	529	1	25
			Physics with Calculus II	19	13	0.15	3.80	114	777	1	25
	Physics with Calculus II Honor	14	14	0.15	2.80	84	573	1	25		