

## Music Department Student Characteristics 2006/07 through 2010/11

### Unique Headcount by Term

FA06	FA07	FA08	FA09	FA10	SP07	SP08	SP09	SP10	SP11	SU06	SU07	SU08	SU09	SU10
633	645	698	844	850	659	666	777	765	798	301	327	346	351	307

### Unique Headcount by Gender

	2006/07		2007/08		2008/09		2009/10		2010/11		Change 09/10-10/11	5 Year Row Total & Average	
Female	598	44%	633	45%	680	43%	792	46%	770	45%	-3%	3,473	45%
Male	695	54%	725	53%	807	54%	828	51%	907	53%	10%	3,962	53%
Unreported	29	3%	34	3%	39	3%	36	2%	32	2%	-11%	170	2%
<b>Column Total</b>	<b>1,322</b>	<b>100%</b>	<b>1,392</b>	<b>100%</b>	<b>1,526</b>	<b>100%</b>	<b>1,656</b>	<b>100%</b>	<b>1,709</b>	<b>100%</b>	<b>3%</b>	<b>7,605</b>	<b>100%</b>

### Unique Headcount by Ethnicity

	2006/07		2007/08		2008/09		2009/10		2010/11		Change 09/10-10/11	5 Year Row Total & Average	
African American	53	4%	50	4%	52	3%	68	4%	67	4%	-1%	290	4%
Asian	359	28%	397	29%	402	27%	445	28%	443	28%	-0%	2,046	28%
Filipino	251	19%	268	20%	314	22%	307	19%	310	19%	1%	1,450	20%
Hispanic	212	15%	219	16%	237	15%	252	15%	241	13%	-4%	1,161	15%
White	315	23%	315	20%	336	21%	370	20%	345	18%	-7%	1,681	20%
Other	45	3%	23	2%	7	0%	8	0%	5	0%	-38%	88	1%
Unknown	87	7%	125	10%	178	13%	208	14%	298	18%	43%	896	13%
<b>Column Total</b>	<b>1,322</b>	<b>100%</b>	<b>1,397</b>	<b>100%</b>	<b>1,526</b>	<b>100%</b>	<b>1,658</b>	<b>100%</b>	<b>1,709</b>	<b>100%</b>	<b>3%</b>	<b>7,612</b>	<b>100%</b>

### Unique Headcount by Age

	2006/07		2007/08		2008/09		2009/10		2010/11		Change 09/10-10/11	5 Year Row Total & Average	
Under 18	49	4%	47	4%	79	7%	83	6%	80	5%	-4%	338	6%
Age 18-22	742	58%	793	60%	896	66%	987	67%	1,031	68%	4%	4,449	65%
Age 23-28	242	19%	255	18%	248	14%	265	12%	270	13%	2%	1,280	14%
Age 29-39	107	8%	120	8%	124	7%	132	7%	146	7%	11%	629	7%
Age 40-49	74	5%	82	4%	77	3%	73	2%	74	3%	1%	380	3%
Age 50-59	71	4%	62	2%	70	2%	79	3%	68	3%	-14%	350	3%
Age 60+	47	2%	44	3%	52	2%	52	2%	51	2%	-2%	246	2%
<b>Column Total</b>	<b>1,332</b>	<b>100%</b>	<b>1,403</b>	<b>100%</b>	<b>1,546</b>	<b>100%</b>	<b>1,671</b>	<b>100%</b>	<b>1,720</b>	<b>100%</b>	<b>3%</b>	<b>7,672</b>	<b>100%</b>

Source: SMCCCD Data Warehouse

\*Note: Counts and percents are based on census figures.

\*\*Note: The variations in total numbers each year within the demographic segments are due to missing data points, and, in the case of age, also due to students crossing a category threshold during a year (18-22 in Fall, 23-28 in Spring).

### Unique Headcount by Status

	2006/07		2007/08		2008/09		2009/10		2010/11		Change 09/10-10/11	5 Year Row Total & Average	
Continuing	939	68%	963	63%	1,063	66%	1,188	70%	1,207	70%	2%	5,360	68%
Currently K-12	37	3%	37	4%	67	6%	78	6%	74	5%	-5%	293	5%
First-Time	134	10%	91	9%	120	9%	97	7%	100	6%	3%	542	8%
First-Time Transfer	83	7%	140	14%	129	10%	128	9%	164	10%	28%	644	10%
Returning	120	7%	121	5%	145	6%	127	5%	116	5%	-9%	629	6%
Returning Transfer	77	5%	90	4%	73	2%	96	3%	93	3%	-3%	429	3%
<b>Column Total</b>	<b>1,390</b>	<b>100%</b>	<b>1,442</b>	<b>100%</b>	<b>1,597</b>	<b>100%</b>	<b>1,714</b>	<b>100%</b>	<b>1,754</b>	<b>100%</b>	<b>2%</b>	<b>7,897</b>	<b>100%</b>

### Unique Headcount by Course-Taking Pattern (Fall and Spring only)

	2006/07		2007/08		2008/09		2009/10		2010/11		Change 09/10-10/11	5 Year Row Total & Average	
Day	812	59%	917	65%	938	61%	864	54%	828	50%	-4%	4,359	57%
Day and Evening	39	3%	38	2%	48	3%	50	3%	53	3%	6%	228	3%
Evening	526	38%	474	32%	610	36%	808	43%	869	47%	8%	3,287	40%
<b>Column Total</b>	<b>1,377</b>	<b>100%</b>	<b>1,429</b>	<b>100%</b>	<b>1,596</b>	<b>100%</b>	<b>1,722</b>	<b>100%</b>	<b>1,750</b>	<b>100%</b>	<b>2%</b>	<b>7,874</b>	<b>100%</b>

### Unique Headcount by Educational Goal

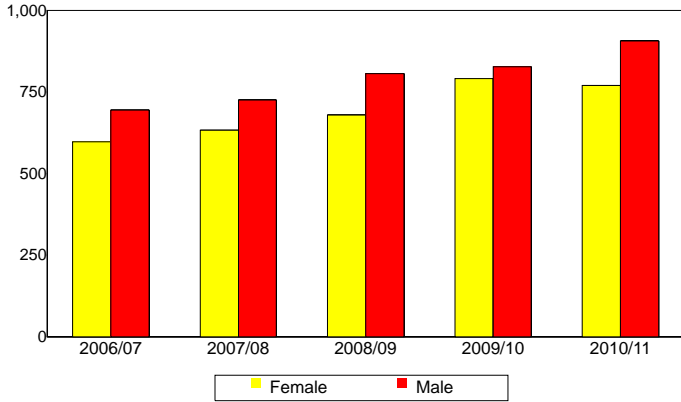
	2006/07		2007/08		2008/09		2009/10		2010/11		Change 09/10-10/11	5 Year Row Total & Average	
Transfer	919	69%	675	47%	795	54%	898	57%	962	59%	7%	4,249	57%
AA/AS w/o Transfer	33	3%	37	2%	50	3%	64	3%	56	3%	-13%	240	3%
Certificate w/o Transfer	6	1%	5	0%	7	1%	12	1%	17	1%	42%	47	1%
Acquire/Update Job Skills	45	3%	47	3%	39	2%	42	2%	57	3%	36%	230	2%
Complete HS Credits	11	1%	25	2%	44	4%	48	4%	25	2%	-48%	153	3%
Educational Development	158	10%	131	9%	131	7%	126	6%	134	6%	6%	680	7%
Formulate Career Plans/G	3	0%	18	1%	24	2%	29	2%	27	2%	-7%	101	1%
Improve Basic Skills	8	0%	47	4%	53	4%	60	4%	59	3%	-2%	227	3%
Maintain Certificate/Licens			4	0%	3	0%	3	0%	1	0%	-67%	11	0%
Undecided/Unreported	166	12%	438	31%	399	24%	388	22%	395	22%	2%	1,786	23%
<b>Column Total</b>	<b>1,349</b>	<b>100%</b>	<b>1,427</b>	<b>100%</b>	<b>1,545</b>	<b>100%</b>	<b>1,670</b>	<b>100%</b>	<b>1,733</b>	<b>100%</b>	<b>4%</b>	<b>7,724</b>	<b>100%</b>

Source: SMCCCD Data Warehouse

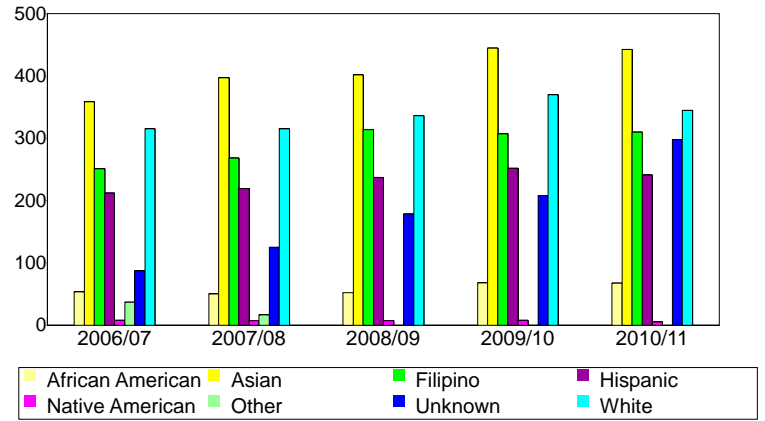
\*Note: Counts and percents are based on census figures for summer, fall and spring.

\*\*Note: The variations in total numbers each year within the Status, Course-Taking, and Educational Goal tables are due to missing data points and also due to students changing Status, Pattern, or Educational Goal within a given year - e.g. "First Time Student" in Fall and "Continuing Student" in Spring.

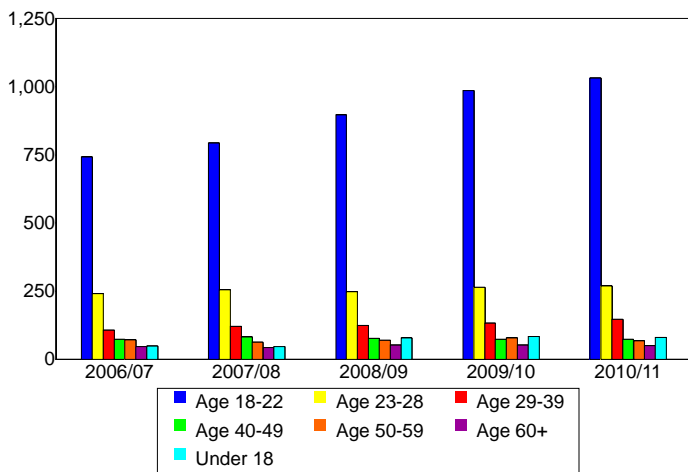
**Unique Headcount by Gender**



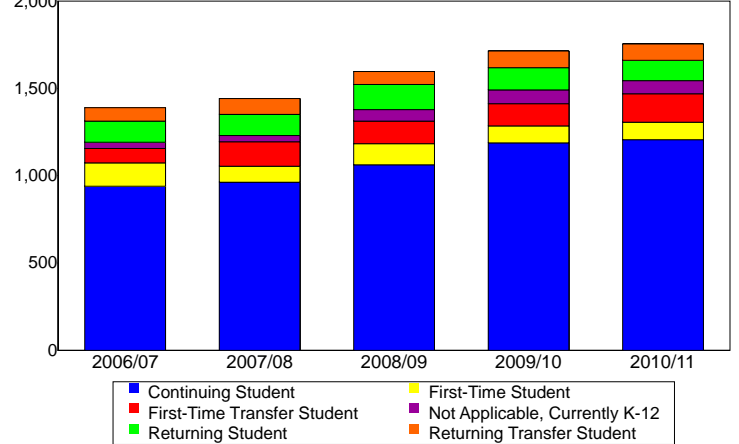
**Unique Headcount by Ethnicity**



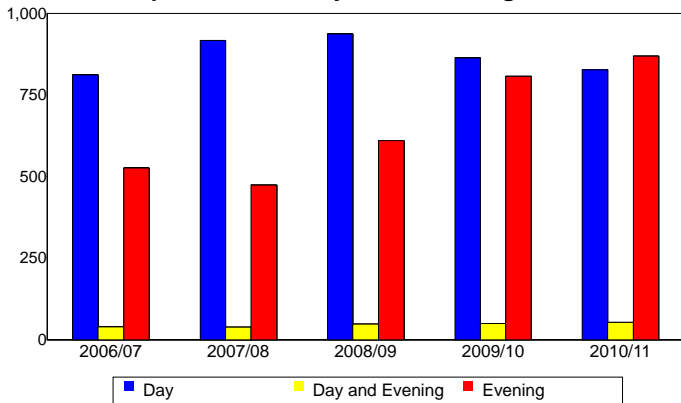
**Unique Headcount by Student Age**



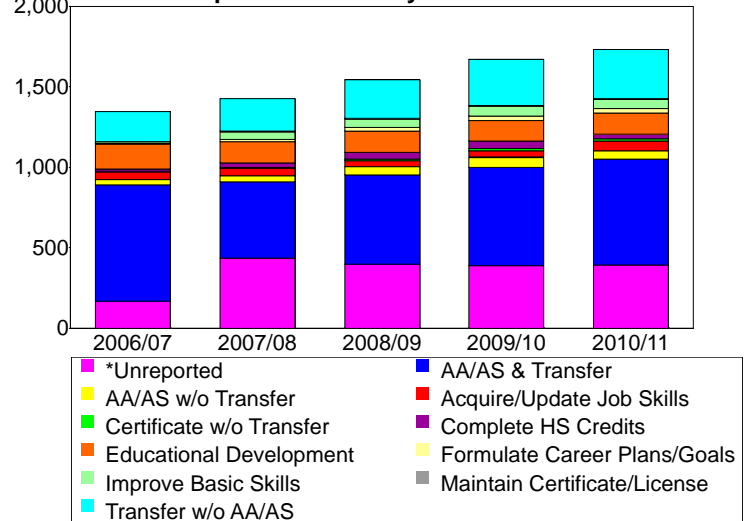
**Unique Headcount by Enrollment Status**



**Unique Headcount by Course-Taking Pattern**



**Unique Headcount by Educational Goal**



Source: SMCCCD Data Warehouse