

Library Science Department Student Characteristics 2006/07 through 2010/11

Unique Headcount by Term

FA06	FA07	FA08	SP07	SP08	SP09	SP10	SP11
34	45	50	43	66	23	33	48

Unique Headcount by Gender

	2006/07		2007/08		2008/09		2009/10		2010/11		Change 09/10-10/11	5 Year Row Total & Average	
Female	36	43%	61	55%	39	52%	12	40%	20	40%	67%	168	47%
Male	36	54%	44	43%	31	44%	21	60%	28	60%	33%	160	51%
Unreported	2	3%	2	2%	3	4%						7	2%
Column Total	74	100%	107	100%	73	100%	33	100%	48	100%	45%	335	100%

Unique Headcount by Ethnicity

	2006/07		2007/08		2008/09		2009/10		2010/11		Change 09/10-10/11	5 Year Row Total & Average	
African American	3	3%	5	7%	2	2%						10	3%
Asian	14	19%	20	18%	16	23%	3	10%	5	11%	67%	58	17%
Filipino	23	35%	32	30%	29	44%	20	57%	34	71%	70%	138	46%
Hispanic	15	20%	17	17%	9	12%	3	10%	4	8%	33%	48	13%
White	10	10%	20	13%	8	9%			1	2%		39	8%
Other	1	0%	1	2%								2	0%
Unknown	8	13%	12	14%	9	10%	7	23%	4	8%	-43%	40	13%
Column Total	74	100%	107	100%	73	100%	33	100%	48	100%	45%	335	100%

Unique Headcount by Age

	2006/07		2007/08		2008/09		2009/10		2010/11		Change 09/10-10/11	5 Year Row Total & Average	
Under 18			3	5%	1	2%						4	2%
Age 18-22	38	58%	57	61%	46	73%	29	92%	39	85%	34%	209	72%
Age 23-28	21	32%	25	27%	7	7%	3	7%	6	12%	100%	62	17%
Age 29-39	9	7%	8	5%	10	11%	1	2%	2	2%	100%	30	6%
Age 40-49	1	0%	6	1%	3	2%						10	1%
Age 50-59	4	2%	4	1%	6	5%			1	1%		15	2%
Age 60+	1	2%	4	0%								5	0%
Column Total	74	100%	107	100%	73	100%	33	100%	48	100%	45%	335	100%

Source: SMCCCD Data Warehouse

*Note: Counts and percents are based on census figures.

**Note: The variations in total numbers each year within the demographic segments are due to missing data points, and, in the case of age, also due to students crossing a category threshold during a year (18-22 in Fall, 23-28 in Spring).

Unique Headcount by Status

	2006/07		2007/08		2008/09		2009/10		2010/11		Change 09/10-10/11	5 Year Row Total & Average	
Continuing	62	84%	69	62%	57	74%	30	93%	46	97%	53%	264	79%
Currently K-12			2	3%								2	1%
First-Time	1	2%	12	18%	7	14%			1	2%		21	9%
First-Time Transfer	5	8%	5	7%	5	9%	1	3%			-100%	16	6%
Returning	6	5%	9	4%	2	2%			1	1%		18	3%
Returning Transfer	1	2%	11	6%	2	1%	2	3%			-100%	16	3%
Column Total	75	100%	108	100%	73	100%	33	100%	48	100%	45%	337	100%

Unique Headcount by Course-Taking Pattern (Fall and Spring only)

	2006/07		2007/08		2008/09		2009/10		2010/11		Change 09/10-10/11	5 Year Row Total & Average	
Day	33	46%	81	76%	50	70%	33	100%	48	100%	45%	245	78%
Day and Evening			2	2%	1	1%						3	1%
Evening	41	54%	26	21%	22	29%						89	21%
Column Total	74	100%	109	100%	73	100%	33	100%	48	100%	45%	337	100%

Unique Headcount by Educational Goal

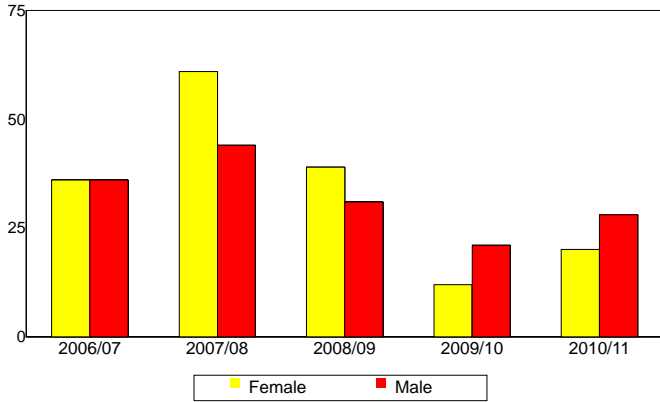
	2006/07		2007/08		2008/09		2009/10		2010/11		Change 09/10-10/11	5 Year Row Total & Average	
Transfer	61	83%	57	50%	47	73%	25	78%	33	69%	32%	223	68%
AA/AS w/o Transfer	2	3%	8	7%	4	5%			3	7%		17	5%
Certificate w/o Transfer	1	0%			1	1%			1	1%		3	0%
Acquire/Update Job Skills	5	8%	4	6%	3	3%	1	2%			-100%	13	4%
Complete HS Credits			2	3%	1	2%			1	2%		4	2%
Educational Development	1	0%	6	3%	1	0%						8	1%
Formulate Career Plans/G			1	2%	3	5%						4	2%
Improve Basic Skills			1	1%								1	0%
Maintain Certificate/Licens					1	2%						1	0%
Undecided/Unreported	4	6%	29	29%	12	9%	7	20%	10	21%	43%	62	18%
Column Total	74	100%	108	100%	73	100%	33	100%	48	100%	45%	336	100%

Source: SMCCCD Data Warehouse

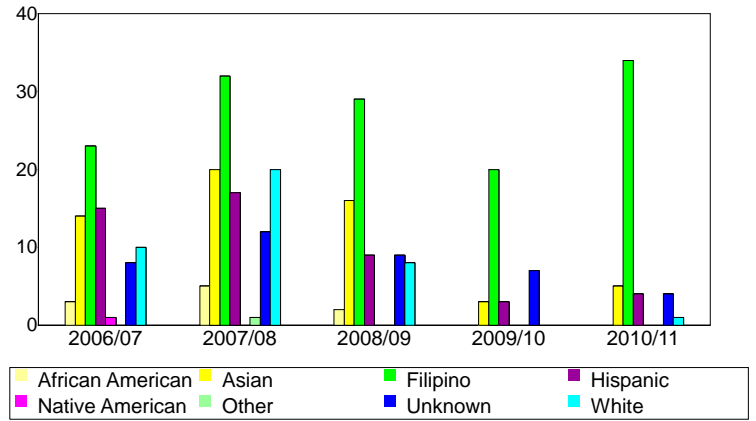
*Note: Counts and percents are based on census figures for summer, fall and spring.

**Note: The variations in total numbers each year within the Status, Course-Taking, and Educational Goal tables are due to missing data points and also due to students changing Status, Pattern, or Educational Goal within a given year - e.g. "First Time Student" in Fall and "Continuing Student" in Spring.

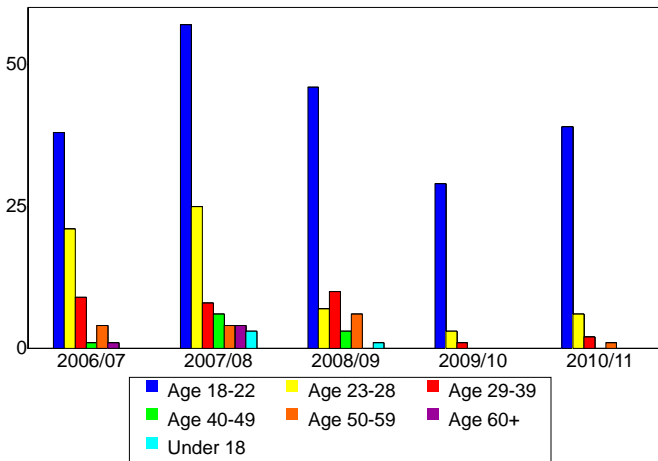
Unique Headcount by Gender



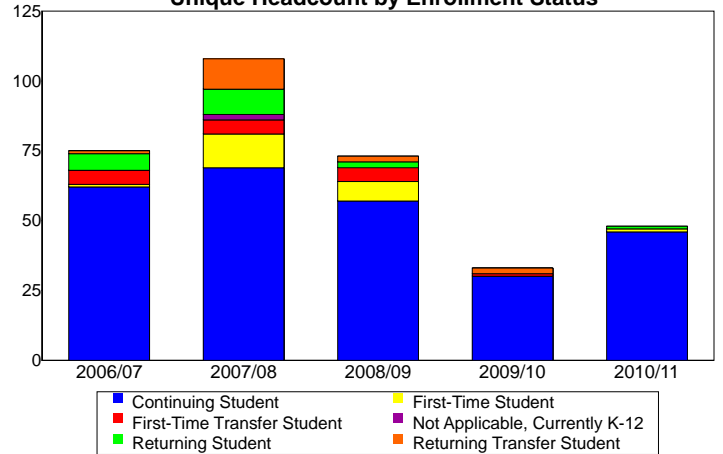
Unique Headcount by Ethnicity



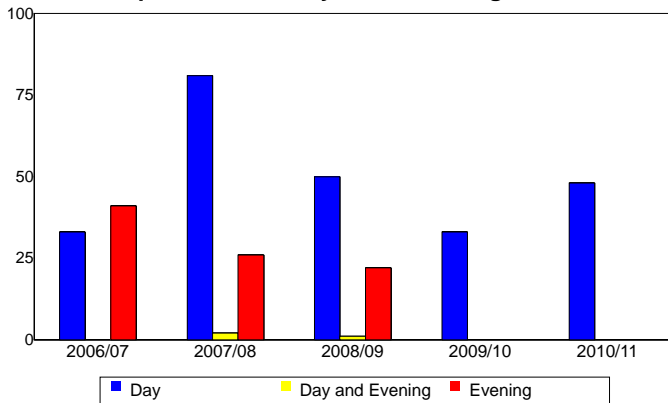
Unique Headcount by Student Age



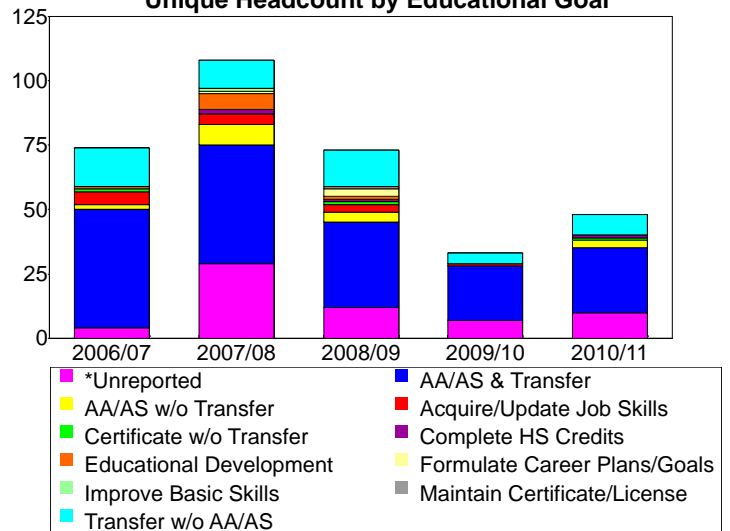
Unique Headcount by Enrollment Status



Unique Headcount by Course-Taking Pattern



Unique Headcount by Educational Goal



Source: SMCCCD Data Warehouse