

Paralegal Department Productivity: By Year and By Term 2006/07 through 2010/11

	Census Headcount	End of Term Headcount	FTEF	FTES	WSCH	Load	Sections	Max Enroll
2006/07	160	138	1.70	19.27	578	340	11	363
2007/08	228	170	1.90	26.64	799	421	14	411
2008/09	208	177	1.90	22.84	685	361	14	398
2009/10	294	246	1.91	37.10	1,113	582	13	398
2010/11	242	197	2.00	33.86	1,016	508	12	408

	Census Headcount	End of Term Headcount	FTEF	FTES	WSCH	Load	Sections	Max Enroll
Fall 2006	82	69	0.70	10.70	321	459	4	150
Fall 2007	109	73	0.70	14.53	436	623	5	153
Fall 2008	91	74	0.90	10.76	323	359	6	185
Fall 2009	143	120	0.90	21.12	634	704	5	185
Fall 2010	138	108	0.90	22.96	689	765	5	185
Spring 2007	78	69	1.00	8.57	257	257	7	213
Spring 2008	119	97	1.20	12.11	363	303	9	258
Spring 2009	117	103	1.00	12.08	363	363	8	213
Spring 2010	151	126	1.01	15.98	479	473	8	213
Spring 2011	104	89	1.10	10.90	327	297	7	223

Source: SMCCCD Data Warehouse

Census Headcount: Number of duplicated headcount at final census.

End of Term Headcount: Number of duplicated headcount at the end of the term.

FTEF: Total number of full time equivalent faculty assigned.

FTES: Total number of full time equivalent students enrolled at first census.

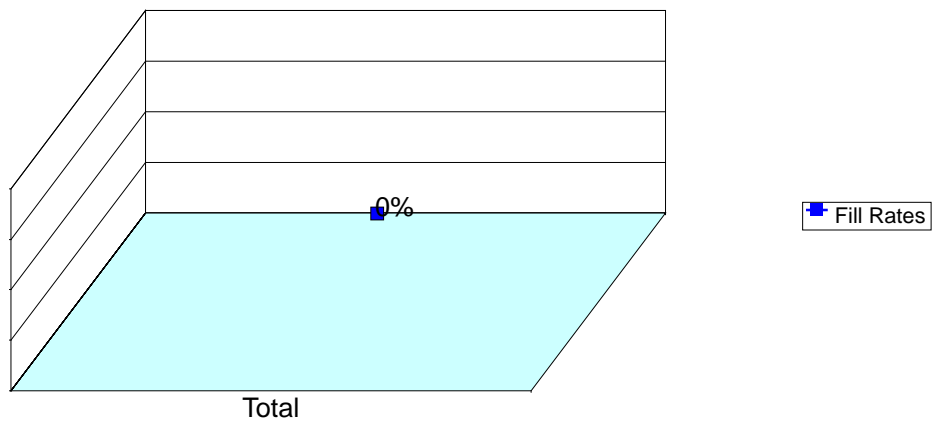
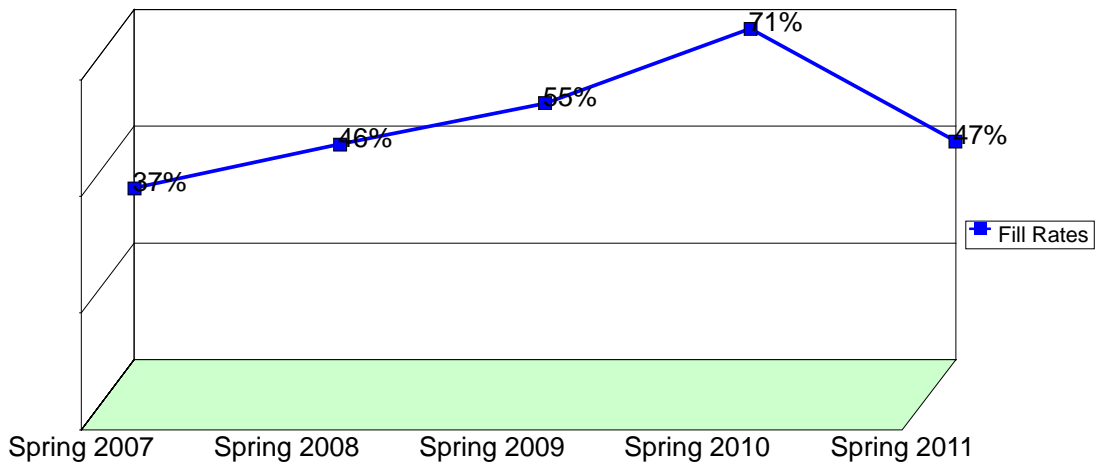
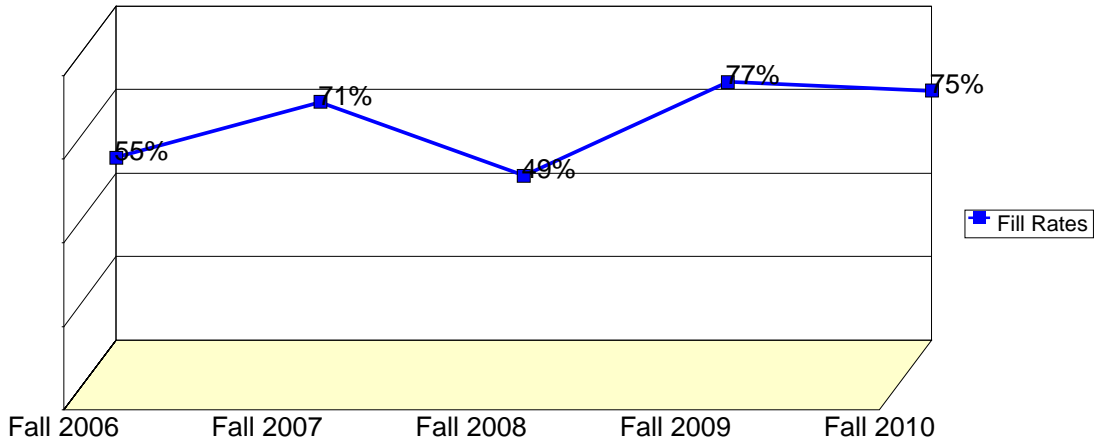
WSCH: Weekly student contact hours generated by census enrollments.

Load: The ratio of WSCH to FTEF, used to measure productivity.

Sections: Total number of sections offered per semester.

Max Enroll: The enrollment capacity or maximum enrollment as defined in curriculum.

Department Fill Rates by Term



Source: SMCCCD Data Warehouse

Fill Rates: The percent a class fills/enrolls based on capacity or enrollment maximum defined in the curriculum (does not include positive attendance or open entry/open exit classes).

Department Productivity: Term by Course

			Census	End of	FTEF	FTES	WSCH	Load	Sections	Max	
			Headcount	Term						Enroll	
Fall 2006	LEGL	240	Introduction to Law	34	29	0.20	3.74	112	561	1	45
		250	Legal Research	14	11	0.20	1.54	46	231	1	45
		252	Civil & Administrative Process	22	18	0.20	2.42	73	363	1	45
		443	Law Office Procedures	12	11	0.10	3.00	90	900	1	30
Fall 2007	LEGL	240	Introduction to Law	39	27	0.20	4.29	129	644	1	45
		250	Legal Research	34	21	0.20	3.74	112	561	1	45
		252	Civil & Administrative Process	18	11	0.20	1.98	59	297	1	45
		443	Law Office Procedures	17	13	0.10	4.42	133	1,326	1	30
		690	Special Projects	1	1	0.00	0.10	3	#INF	1	3
Fall 2008	LEGL	240	Introduction to Law	42	30	0.20	4.62	139	693	1	45
		250	Legal Research	19	17	0.20	1.90	57	285	1	45
		252	Civil & Administrative Process	7	7	0.20	0.77	23	116	1	45
		443	Law Office Procedures	8	8	0.10	2.00	60	600	1	30
		680S	Internship (Volunteer)	9	8	0.10	0.90	27	270	1	35
		680S	Internship (Paid)	6	4	0.10	0.57	17	170	1	35
Fall 2009	LEGL	240	Introduction to Law	45	37	0.20	5.25	158	788	1	45
		250	Legal Research	31	24	0.20	3.41	102	512	1	45
		252	Civil & Administrative Process	33	30	0.20	3.85	116	578	1	45
		443	Law Office Procedures	18	17	0.10	4.50	135	1,350	1	30
		671	Paralegal Internship I	16	12	0.20	4.11	123	616	1	35
Fall 2010	LEGL	240	Introduction to Law	42	35	0.20	4.62	139	693	1	45
		250	Legal Research	37	29	0.20	4.32	130	648	1	45
		252	Civil & Administrative Process	24	21	0.20	2.64	79	396	1	45
		443	Law Office Procedures	14	7	0.10	3.55	106	1,064	1	30
		671	Paralegal Internship I	21	16	0.20	7.84	235	1,176	1	35
Spring 2007	LEGL	245	Legal Operations	25	23	0.20	2.50	75	375	1	45
		250	Legal Research	17	14	0.20	1.70	51	255	1	45
		252	Principles of Civil & Admin. P	20	18	0.20	2.00	60	300	1	35
		304	Concepts of Criminal Law	5	4	0.10	0.50	15	150	1	45
		306	Legal Aspects of Evidence	2	2	0.10	0.20	6	60	1	45
		320	Criminal Investigation	2	1	0.10	0.20	6	60	1	45
		443	Law Office Procedures	7	7	0.10	1.47	44	441	1	40
Spring 2008	LEGL	245	Legal Operations	35	27	0.20	3.50	105	525	1	45
		250	Legal Research	17	15	0.20	1.70	51	255	1	45
		252	Principles of Civil & Admin. P	20	16	0.20	2.00	60	300	1	35
		260	Adv. Legal Research & Writing	16	13	0.20	1.76	53	264	1	45
		304	Concepts of Criminal Law	3	2	0.10	0.30	9	90	1	45
		306	Legal Aspects of Evidence	3	2	0.10	0.30	9	90	1	45
		320	Criminal Investigation	4	4	0.10	0.40	12	120	1	45
		445	Law Office Management	18	16	0.10	1.98	59	594	1	35
690	Special Projects	3	2	0.00	0.17	5	#INF	1	3		
Spring 2009	LEGL	245	Legal Operations	37	34	0.20	3.70	111	555	1	45
		250	Legal Research	25	20	0.20	2.75	83	413	1	45
		252	Principles of Civil & Admin. P	27	24	0.20	2.70	81	405	1	35
		304	Concepts of Criminal Law	4	4	0.10	0.40	12	120	1	45
		306	Legal Aspects of Evidence	0	0	0.10	0.00	0	0	1	45
320	Criminal Investigation	6	6	0.10	0.60	18	180	1	45		

				Census Headcount	End of Term Headcount	FTEF	FTES	WSCH	Load	Sections	Max Enroll
		445	Law Office Management	16	14	0.10	1.87	56	560	1	35
		690	Special Projects	2	1	0.00	0.07	2	#INF	1	3
Spring 2010	LEGL	245	Legal Operations	47	38	0.20	4.70	141	705	1	45
		250	Legal Research	33	27	0.21	3.63	109	512	1	45
		252	Principles of Civil & Admin. P	32	28	0.20	3.52	106	528	1	35
		304	Concepts of Criminal Law	3	3	0.10	0.30	9	90	1	45
		306	Legal Aspects of Evidence	7	7	0.10	0.70	21	210	1	45
		320	Criminal Investigation	5	3	0.10	0.50	15	150	1	45
		445	Law Office Management	23	19	0.10	2.53	76	759	1	35
		690	Special Projects	1	1	0.00	0.10	3	#INF	1	3
		Spring 2011	LEGL	245	Legal Operations	34	31	0.20	3.40	102	510
250	Legal Research			18	14	0.20	1.80	54	270	1	45
252	Principles of Civil & Admin. P			16	13	0.20	1.60	48	240	1	35
304	Concepts of Criminal Law			1	1	0.10	0.10	3	30	1	45
320	Criminal Investigation			4	4	0.10	0.40	12	120	1	45
445	Law Office Management			16	16	0.10	1.60	48	480	1	35
671	Paralegal Internship I			15	10	0.20	2.00	60	300	1	35