

# Journalism Department Student Characteristics 2006/07 through 2010/11

## Unique Headcount by Term

FA06	FA07	FA08	FA09	FA10	SP07	SP08	SP09	SP10	SP11
47	54	68	66	67	48	52	74	65	70

## Unique Headcount by Gender

	2006/07		2007/08		2008/09		2009/10		2010/11		Change 09/10-10/11	5 Year Row Total & Average	
Female	42	51%	42	49%	62	50%	62	55%	55	49%	-11%	263	51%
Male	38	47%	47	50%	58	47%	49	42%	58	49%	18%	250	47%
Unreported	1	2%	1	1%	2	3%	4	3%	3	2%	-25%	11	2%
<b>Column Total</b>	<b>81</b>	<b>100%</b>	<b>90</b>	<b>100%</b>	<b>122</b>	<b>100%</b>	<b>115</b>	<b>100%</b>	<b>116</b>	<b>100%</b>	<b>1%</b>	<b>524</b>	<b>100%</b>

## Unique Headcount by Ethnicity

	2006/07		2007/08		2008/09		2009/10		2010/11		Change 09/10-10/11	5 Year Row Total & Average	
African American	6	8%	5	6%	8	7%	3	2%	3	3%	0%	25	5%
Asian	15	19%	15	17%	18	14%	24	21%	19	16%	-21%	91	17%
Filipino	15	20%	11	12%	23	17%	15	13%	16	12%	7%	80	14%
Hispanic	9	9%	25	27%	24	21%	19	18%	27	23%	42%	104	20%
White	22	26%	27	30%	34	27%	28	23%	28	26%	0%	139	26%
Other	5	6%	1	0%	2	2%						8	1%
Unknown	9	13%	6	7%	13	11%	26	23%	23	20%	-12%	77	16%
<b>Column Total</b>	<b>81</b>	<b>100%</b>	<b>90</b>	<b>100%</b>	<b>122</b>	<b>100%</b>	<b>115</b>	<b>100%</b>	<b>116</b>	<b>100%</b>	<b>1%</b>	<b>524</b>	<b>100%</b>

## Unique Headcount by Age

	2006/07		2007/08		2008/09		2009/10		2010/11		Change 09/10-10/11	5 Year Row Total & Average	
Under 18	2	3%			2	3%	1	0%	2	2%	100%	7	2%
Age 18-22	60	75%	67	75%	86	74%	92	84%	85	78%	-8%	390	78%
Age 23-28	12	15%	19	23%	29	20%	21	13%	21	14%	0%	102	16%
Age 29-39	2	2%			4	3%	3	3%	3	3%	0%	12	2%
Age 40-49	3	2%	4	2%	2	1%			3	2%		12	1%
Age 50-59	1	0%							2	0%		3	0%
Age 60+	2	2%										2	0%
<b>Column Total</b>	<b>82</b>	<b>100%</b>	<b>90</b>	<b>100%</b>	<b>123</b>	<b>100%</b>	<b>117</b>	<b>100%</b>	<b>116</b>	<b>100%</b>	<b>-1%</b>	<b>528</b>	<b>100%</b>

Source: SMCCCD Data Warehouse

\*Note: Counts and percents are based on census figures.

\*\*Note: The variations in total numbers each year within the demographic segments are due to missing data points, and, in the case of age, also due to students crossing a category threshold during a year (18-22 in Fall, 23-28 in Spring).

### Unique Headcount by Status

	2006/07		2007/08		2008/09		2009/10		2010/11		Change 09/10-10/11	5 Year Row Total & Average	
Continuing	66	81%	62	63%	84	64%	83	69%	92	80%	11%	387	71%
Currently K-12							1	1%	1	1%	0%	2	0%
First-Time	6	7%	14	19%	22	20%	15	14%	9	8%	-40%	66	14%
First-Time Transfer	5	7%	9	13%	7	7%	12	11%	6	5%	-50%	39	8%
Returning	3	2%	6	5%	9	5%	6	4%	7	5%	17%	31	4%
Returning Transfer	3	3%	2	1%	7	4%	3	1%	4	2%	33%	19	2%
<b>Column Total</b>	<b>83</b>	<b>100%</b>	<b>93</b>	<b>100%</b>	<b>129</b>	<b>100%</b>	<b>120</b>	<b>100%</b>	<b>119</b>	<b>100%</b>	<b>-1%</b>	<b>544</b>	<b>100%</b>

### Unique Headcount by Course-Taking Pattern (Fall and Spring only)

	2006/07		2007/08		2008/09		2009/10		2010/11		Change 09/10-10/11	5 Year Row Total & Average	
Day	81	100%	90	100%	122	100%	115	100%	116	100%	1%	524	100%
<b>Column Total</b>	<b>81</b>	<b>100%</b>	<b>90</b>	<b>100%</b>	<b>122</b>	<b>100%</b>	<b>115</b>	<b>100%</b>	<b>116</b>	<b>100%</b>	<b>1%</b>	<b>524</b>	<b>100%</b>

### Unique Headcount by Educational Goal

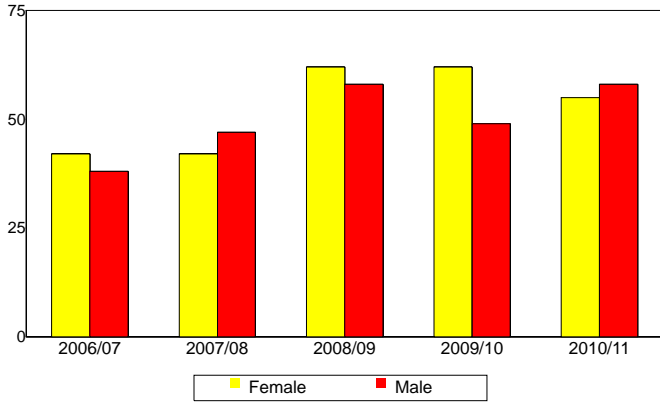
	2006/07		2007/08		2008/09		2009/10		2010/11		Change 09/10-10/11	5 Year Row Total & Average	
Transfer	70	87%	57	61%	81	69%	84	72%	90	77%	7%	382	73%
AA/AS w/o Transfer	2	2%	1	1%	4	4%	1	1%	3	3%	200%	11	2%
Certificate w/o Transfer					4	3%			3	2%		7	1%
Acquire/Update Job Skills	2	2%	1	1%	2	1%	4	3%	2	1%	-50%	11	2%
Educational Development	1	1%	4	6%	3	2%	1	1%	2	2%	100%	11	2%
Formulate Career Plans/Gr			1	1%	1	0%	1	0%	1	1%	0%	4	1%
Improve Basic Skills	1	1%							2	1%		3	0%
Maintain Certificate/Licens			1	1%	1	1%	1	2%			-100%	3	1%
Undecided/Unreported	7	7%	27	29%	28	19%	25	21%	15	14%	-40%	102	18%
<b>Column Total</b>	<b>83</b>	<b>100%</b>	<b>92</b>	<b>100%</b>	<b>124</b>	<b>100%</b>	<b>117</b>	<b>100%</b>	<b>118</b>	<b>100%</b>	<b>1%</b>	<b>534</b>	<b>100%</b>

Source: SMCCCD Data Warehouse

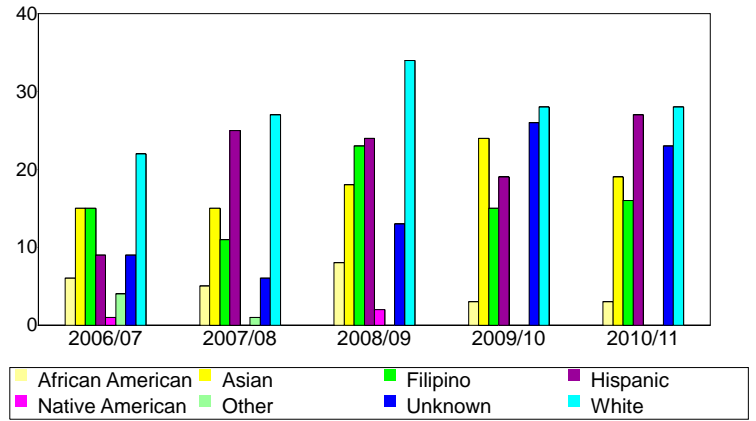
\*Note: Counts and percents are based on census figures for summer, fall and spring.

\*\*Note: The variations in total numbers each year within the Status, Course-Taking, and Educational Goal tables are due to missing data points and also due to students changing Status, Pattern, or Educational Goal within a given year - e.g. "First Time Student" in Fall and "Continuing Student" in Spring.

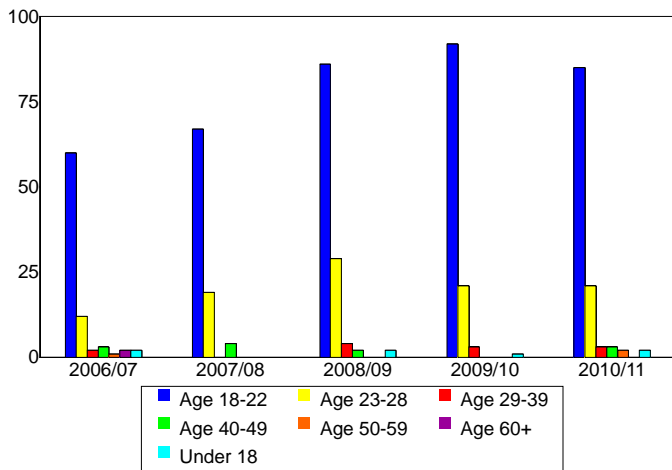
**Unique Headcount by Gender**



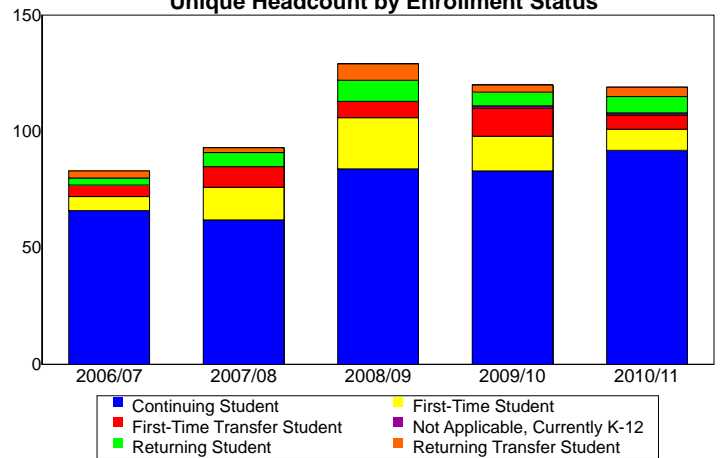
**Unique Headcount by Ethnicity**



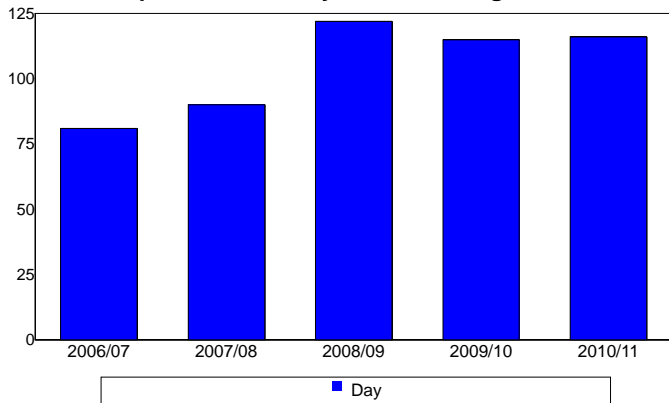
**Unique Headcount by Student Age**



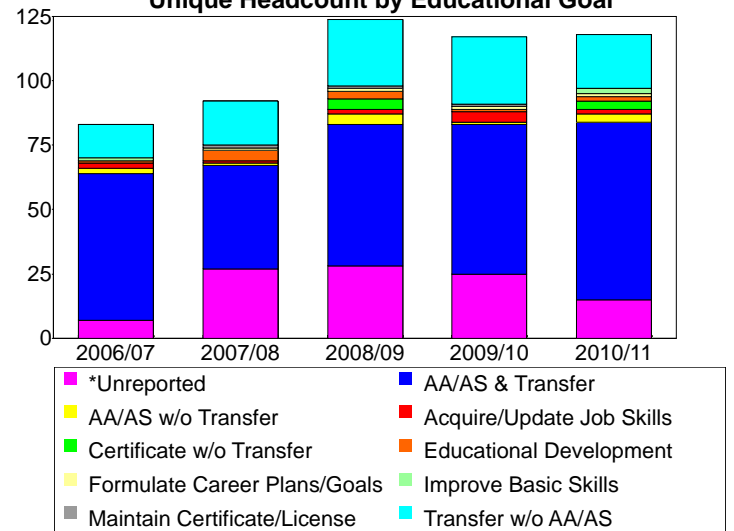
**Unique Headcount by Enrollment Status**



**Unique Headcount by Course-Taking Pattern**



**Unique Headcount by Educational Goal**



Source: SMCCCD Data Warehouse