

Humanities Department Productivity: By Year and By Term 2006/07 through 2010/11

	Census Headcount	End of Term Headcount	FTEF	FTES	WSCH	Load	Sections	Max Enroll
2006/07	259	219	1.40	26.43	793	566	7	315
2007/08	233	183	1.40	23.94	718	513	7	315
2008/09	296	234	1.40	30.55	916	655	7	315
2009/10	122	115	0.60	13.61	408	680	3	135
2010/11	136	126	0.60	14.84	445	742	3	135

	Census Headcount	End of Term Headcount	FTEF	FTES	WSCH	Load	Sections	Max Enroll
Fall 2006	103	88	0.60	10.66	320	533	3	135
Fall 2007	108	91	0.60	11.18	335	559	3	135
Fall 2008	134	102	0.60	13.76	413	688	3	135
Fall 2009	40	36	0.20	4.67	140	700	1	45
Fall 2010	44	38	0.20	5.13	154	770	1	45
Spring 2007	122	97	0.60	12.56	377	628	3	135
Spring 2008	125	92	0.80	12.76	383	479	4	180
Spring 2009	127	99	0.60	13.27	398	663	3	135
Spring 2010	43	42	0.20	5.02	151	753	1	45
Spring 2011	46	43	0.20	5.37	161	805	1	45
Summer 2006	34	34	0.20	3.21	96	481	1	45
Summer 2008	35	33	0.20	3.52	106	528	1	45
Summer 2009	39	37	0.20	3.92	118	588	1	45
Summer 2010	46	45	0.20	4.34	130	651	1	45

Source: SMCCCD Data Warehouse

Census Headcount: Number of duplicated headcount at final census.

End of Term Headcount: Number of duplicated headcount at the end of the term.

FTEF: Total number of full time equivalent faculty assigned.

FTES: Total number of full time equivalent students enrolled at first census.

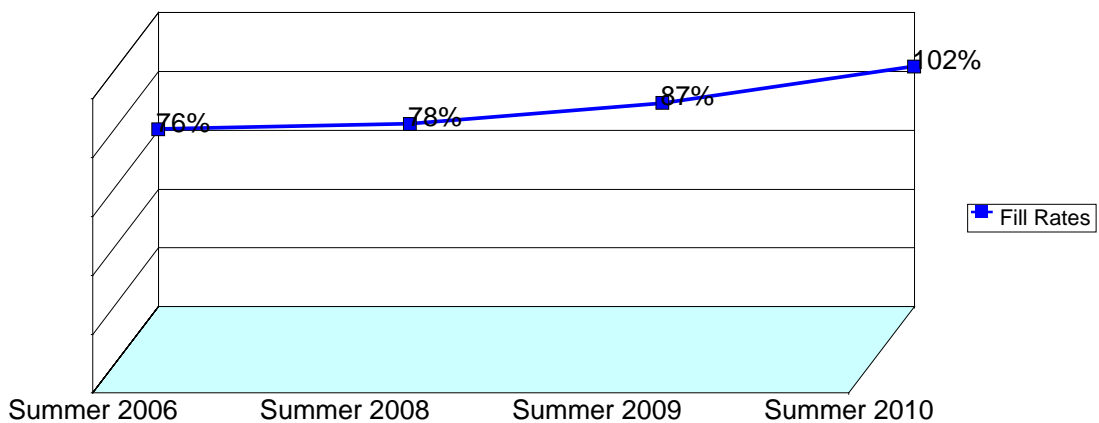
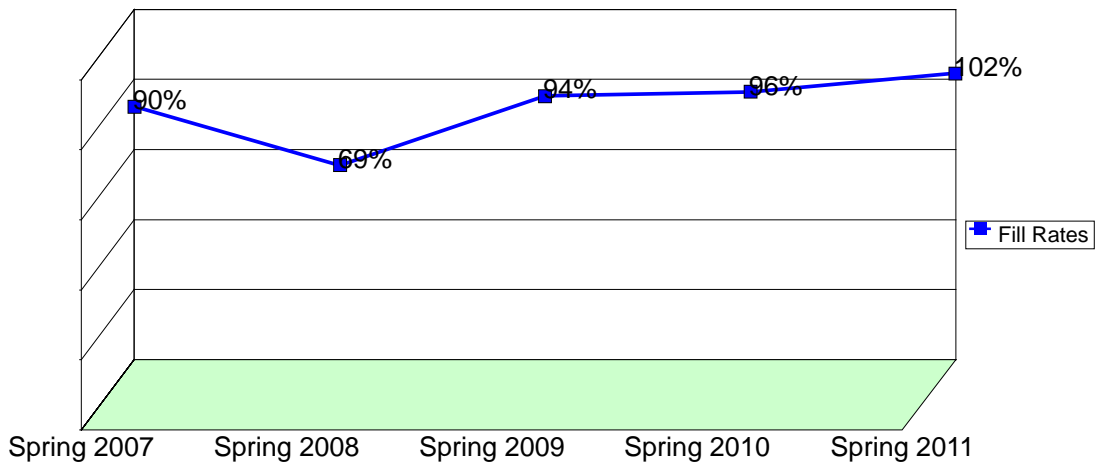
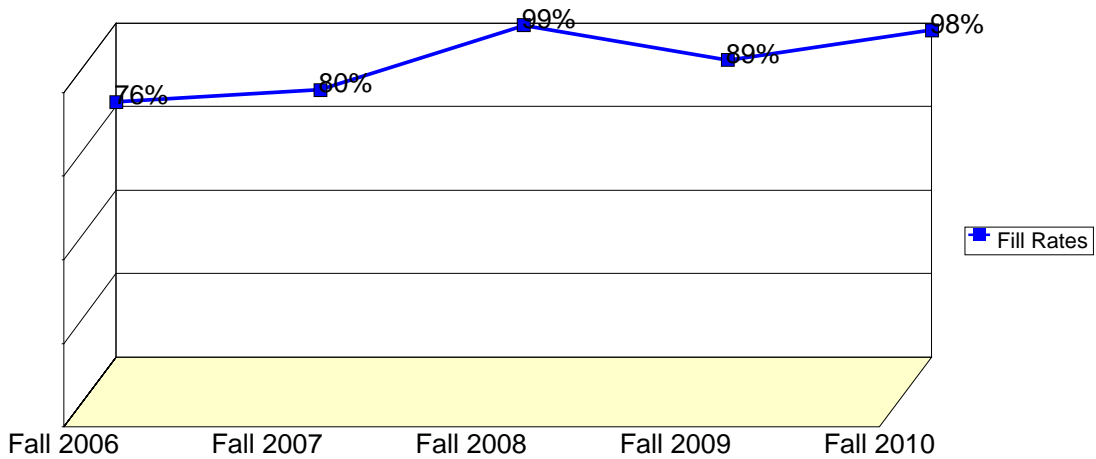
WSCH: Weekly student contact hours generated by census enrollments.

Load: The ratio of WSCH to FTEF, used to measure productivity.

Sections: Total number of sections offered per semester.

Max Enroll: The enrollment capacity or maximum enrollment as defined in curriculum.

Department Fill Rates by Term



Source: SMCCCD Data Warehouse

Fill Rates: The percent a class fills/enrolls based on capacity or enrollment maximum defined in the curriculum (does not include positive attendance or open entry/open exit classes).

Department Productivity: Term by Course

				Census Headcount	End of Term Headcount	FTEF	FTES	WSCH	Load	Sections	Max Enroll
Fall 2006	HUM.	106	Awakening of Individuality	80	70	0.40	8.36	251	627	2	90
		117	Arts, Senses and Imagination	23	18	0.20	2.30	69	345	1	45
Fall 2007	HUM.	106	Awakening of Individuality	78	66	0.40	8.18	245	614	2	90
		117	Arts, Senses and Imagination	30	25	0.20	3.00	90	450	1	45
Fall 2008	HUM.	106	Awakening of Individuality	88	72	0.40	9.16	275	687	2	90
		117	Arts, Senses and Imagination	46	30	0.20	4.60	138	690	1	45
Fall 2009	HUM.	106	Awakening of Individuality	40	36	0.20	4.67	140	700	1	45
Fall 2010	HUM.	106	Awakening of Individuality	44	38	0.20	5.13	154	770	1	45
Spring 2007	HUM.	106	Awakening of Individuality	77	66	0.40	8.06	242	605	2	90
		117	Arts, Senses and Imagination	45	31	0.20	4.50	135	675	1	45
Spring 2008	HUM.	106	Awakening of Individuality	67	54	0.40	6.96	209	522	2	90
		117	Arts, Senses and Imagination	58	38	0.40	5.80	174	435	2	90
Spring 2009	HUM.	106	Awakening of Individuality	82	63	0.40	8.77	263	658	2	90
		117	Arts, Senses and Imagination	45	36	0.20	4.50	135	675	1	45
Spring 2010	HUM.	106	Awakening of Individuality	43	42	0.20	5.02	151	753	1	45
Spring 2011	HUM.	106	Awakening of Individuality	46	43	0.20	5.37	161	805	1	45
Summer 2011	HUM.	106	Awakening of Individuality	34	34	0.20	3.21	96	481	1	45
Summer 2012	HUM.	106	Awakening of Individuality	35	33	0.20	3.52	106	528	1	45
Summer 2013	HUM.	106	Awakening of Individuality	39	37	0.20	3.92	118	588	1	45
Summer 2014	HUM.	106	Awakening of Individuality	46	45	0.20	4.34	130	651	1	45