

Health Sciences Department Student Characteristics 2006/07 through 2010/11

Unique Headcount by Term

FA06	FA07	FA08	FA09	FA10	SP07	SP08	SP09	SP10	SP11	SU06	SU07	SU08	SU09	SU10
273	252	302	375	216	254	330	373	323	275	83	85	117	146	35

Unique Headcount by Gender

	2006/07		2007/08		2008/09		2009/10		2010/11		Change 09/10-10/11	5 Year Row Total & Average	
Female	308	51%	322	49%	415	55%	457	55%	292	55%	-36%	1,794	53%
Male	279	47%	322	49%	350	44%	348	43%	205	42%	-41%	1,504	45%
Unreported	10	2%	6	1%	8	1%	18	2%	14	3%	-22%	56	2%
Column Total	597	100%	650	100%	773	100%	823	100%	511	100%	-38%	3,354	100%

Unique Headcount by Ethnicity

	2006/07		2007/08		2008/09		2009/10		2010/11		Change 09/10-10/11	5 Year Row Total & Average	
African American	20	4%	22	3%	44	6%	39	5%	22	4%	-44%	147	5%
Asian	136	22%	151	22%	163	21%	192	23%	126	24%	-34%	768	22%
Filipino	139	23%	153	23%	180	23%	187	22%	126	24%	-33%	785	23%
Hispanic	127	21%	127	20%	139	18%	138	17%	54	10%	-61%	585	17%
White	117	19%	129	20%	171	22%	146	17%	93	19%	-36%	656	20%
Other	21	4%	20	3%	3	0%	1	0%			-100%	45	1%
Unknown	37	6%	48	8%	73	9%	120	15%	90	18%	-25%	368	12%
Column Total	597	100%	650	100%	773	100%	823	100%	511	100%	-38%	3,354	100%

Unique Headcount by Age

	2006/07		2007/08		2008/09		2009/10		2010/11		Change 09/10-10/11	5 Year Row Total & Average	
Under 18	17	3%	13	3%	20	3%	28	4%	7	2%	-75%	85	3%
Age 18-22	432	75%	479	77%	544	75%	547	74%	289	66%	-47%	2,291	73%
Age 23-28	95	16%	119	16%	147	15%	167	15%	130	21%	-22%	658	16%
Age 29-39	32	4%	35	4%	44	5%	51	5%	60	9%	18%	222	5%
Age 40-49	15	1%	5	0%	12	1%	20	1%	15	2%	-25%	67	1%
Age 50-59	7	1%	1	0%	7	1%	9	1%	10	1%	11%	34	1%
Age 60+	1	0%			4	0%	2	0%			-100%	7	0%
Column Total	599	100%	652	100%	778	100%	824	100%	511	100%	-38%	3,364	100%

Source: SMCCCD Data Warehouse

*Note: Counts and percents are based on census figures.

**Note: The variations in total numbers each year within the demographic segments are due to missing data points, and, in the case of age, also due to students crossing a category threshold during a year (18-22 in Fall, 23-28 in Spring).

Unique Headcount by Status

	2006/07		2007/08		2008/09		2009/10		2010/11		Change 09/10-10/11	5 Year Row Total & Average	
Continuing	446	74%	511	75%	561	69%	609	74%	414	82%	-32%	2,541	74%
Currently K-12	11	2%	16	3%	22	4%	21	3%			-100%	70	3%
First-Time	50	9%	26	6%	57	10%	40	6%	8	2%	-80%	181	6%
First-Time Transfer	36	6%	41	9%	63	10%	53	8%	25	6%	-53%	218	8%
Returning	36	6%	38	4%	46	6%	65	7%	41	7%	-37%	226	6%
Returning Transfer	23	3%	21	2%	26	2%	39	3%	25	4%	-36%	134	3%
Column Total	602	100%	653	100%	775	100%	827	100%	513	100%	-38%	3,370	100%

Unique Headcount by Course-Taking Pattern (Fall and Spring only)

	2006/07		2007/08		2008/09		2009/10		2010/11		Change 09/10-10/11	5 Year Row Total & Average	
Day	439	75%	463	73%	535	71%	533	70%	261	58%	-51%	2,231	69%
Day and Evening	2	0%	2	0%	1	0%	3	0%	2	0%	-33%	10	0%
Evening	158	25%	189	26%	245	29%	290	30%	249	41%	-14%	1,131	30%
Column Total	599	100%	654	100%	781	100%	826	100%	512	100%	-38%	3,372	100%

Unique Headcount by Educational Goal

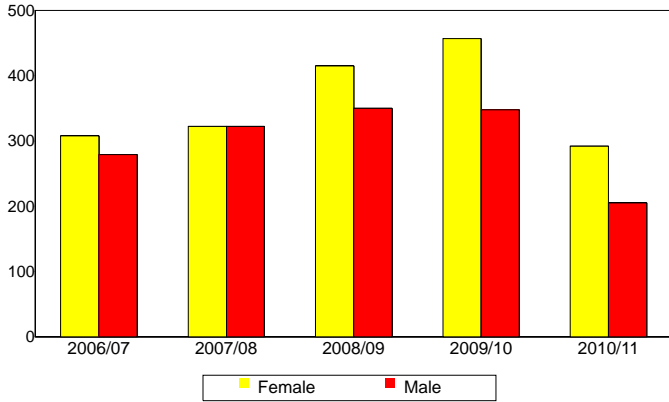
	2006/07		2007/08		2008/09		2009/10		2010/11		Change 09/10-10/11	5 Year Row Total & Average	
Transfer	472	78%	367	56%	426	55%	467	59%	271	57%	-42%	2,003	60%
AA/AS w/o Transfer	21	3%	23	3%	44	6%	45	5%	42	8%	-7%	175	5%
Certificate w/o Transfer	4	1%	8	2%	10	1%	11	1%	19	3%	73%	52	2%
Acquire/Update Job Skills	13	2%	16	2%	37	5%	40	4%	39	6%	-3%	145	4%
Complete HS Credits	6	1%	13	3%	22	4%	19	3%	3	1%	-84%	53	2%
Educational Development	18	3%	13	2%	16	2%	32	3%	26	5%	-19%	105	3%
Formulate Career Plans/G			4	1%	7	1%	10	1%	9	1%	-10%	30	1%
Improve Basic Skills					3	1%	7	1%	3	1%	-57%	13	0%
Maintain Certificate/Licens			1	0%	2	0%	3	0%	7	1%	133%	13	0%
Undecided/Unreported	65	12%	211	31%	206	25%	190	21%	94	18%	-51%	766	22%
Column Total	599	100%	656	100%	773	100%	824	100%	513	100%	-38%	3,365	100%

Source: SMCCCD Data Warehouse

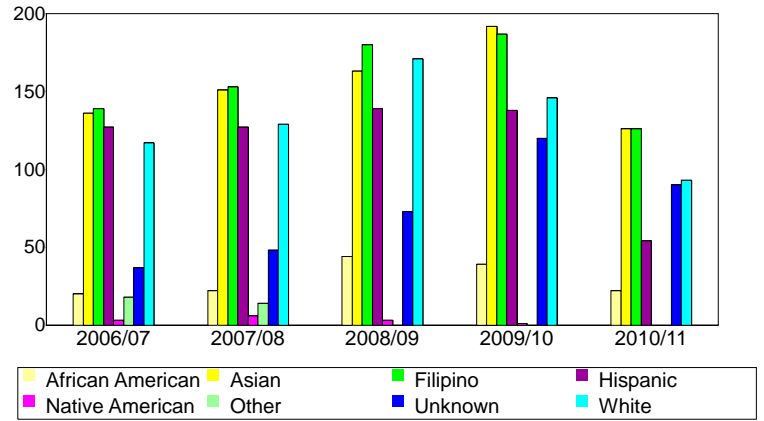
*Note: Counts and percents are based on census figures for summer, fall and spring.

**Note: The variations in total numbers each year within the Status, Course-Taking, and Educational Goal tables are due to missing data points and also due to students changing Status, Pattern, or Educational Goal within a given year - e.g. "First Time Student" in Fall and "Continuing Student" in Spring.

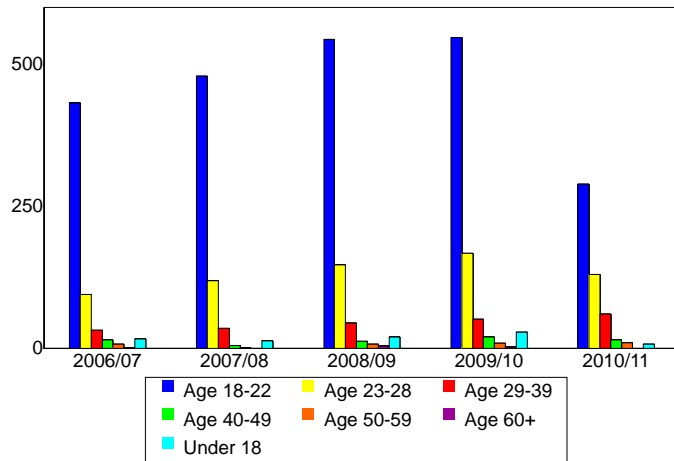
Unique Headcount by Gender



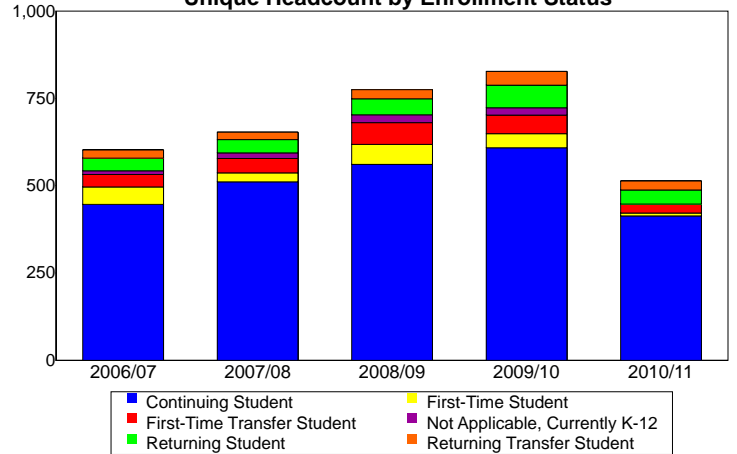
Unique Headcount by Ethnicity



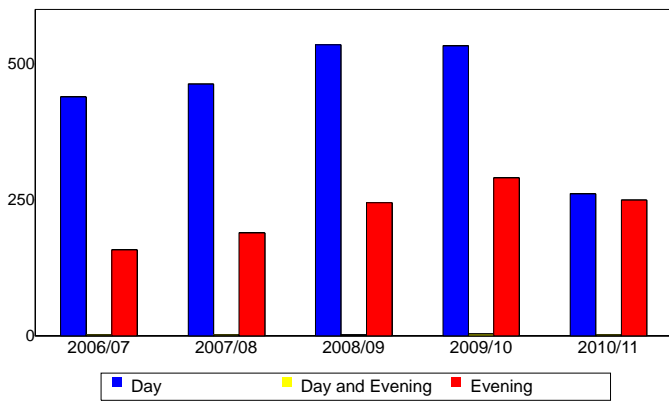
Unique Headcount by Student Age



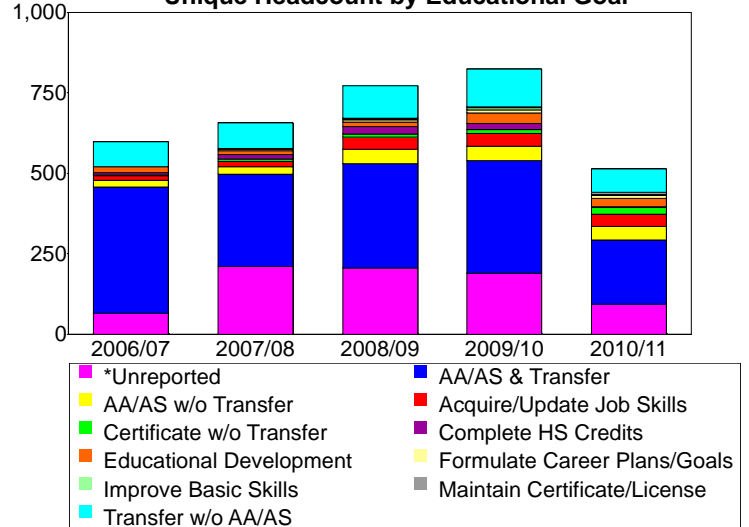
Unique Headcount by Enrollment Status



Unique Headcount by Course-Taking Pattern



Unique Headcount by Educational Goal



Source: SMCCCD Data Warehouse