

Health Sciences Department Productivity: By Year and By Term 2006/07 through 2010/11

	Census Headcount	End of Term Headcount	FTEF	FTES	WSCH	Load	Sections	Max Enroll
2006/07	624	504	3.52	63.03	1,891	538	22	730
2007/08	670	570	3.40	67.43	2,023	595	19	635
2008/09	799	684	4.81	91.43	2,743	571	23	770
2009/10	854	742	3.90	86.13	2,584	663	23	778
2010/11	528	465	1.70	53.11	1,593	937	11	373

	Census Headcount	End of Term Headcount	FTEF	FTES	WSCH	Load	Sections	Max Enroll
Fall 2006	279	231	1.57	29.87	896	572	8	275
Fall 2007	253	218	1.30	25.89	777	597	7	225
Fall 2008	303	256	1.50	31.16	935	623	8	290
Fall 2009	375	333	1.80	38.42	1,153	640	10	355
Fall 2010	217	182	0.80	22.01	660	825	5	160
Spring 2007	259	207	1.35	24.67	740	548	11	335
Spring 2008	331	281	1.50	33.45	1,003	669	9	300
Spring 2009	377	325	1.80	38.27	1,148	638	11	360
Spring 2010	327	282	1.40	33.09	993	709	9	285
Spring 2011	276	251	0.80	27.60	828	1,035	5	196
Summer 2006	86	66	0.60	8.49	255	425	3	120
Summer 2007	86	71	0.60	8.09	243	405	3	110
Summer 2008	119	103	1.51	22.00	660	438	4	120
Summer 2009	152	127	0.70	14.62	439	627	4	138
Summer 2010	35	32	0.10	3.50	105	1,050	1	18

Source: SMCCCD Data Warehouse

Census Headcount: Number of duplicated headcount at final census.

End of Term Headcount: Number of duplicated headcount at the end of the term.

FTEF: Total number of full time equivalent faculty assigned.

FTES: Total number of full time equivalent students enrolled at first census.

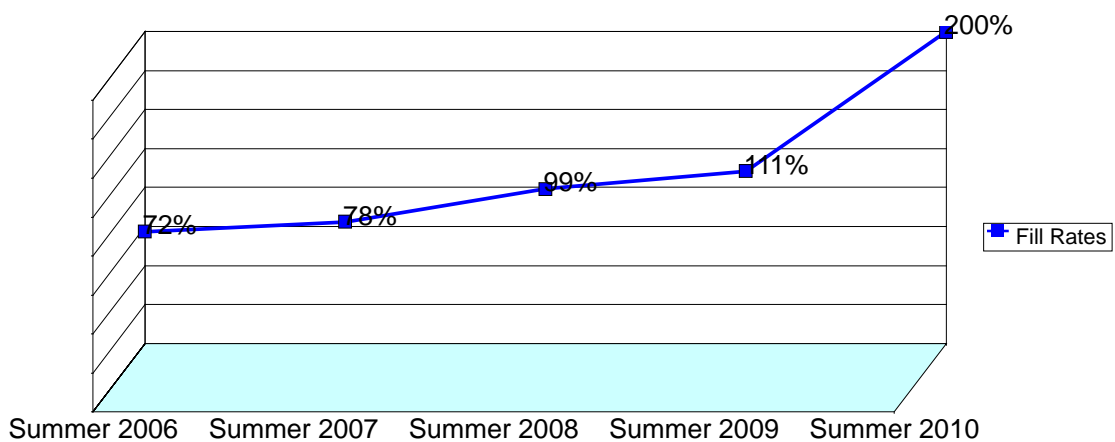
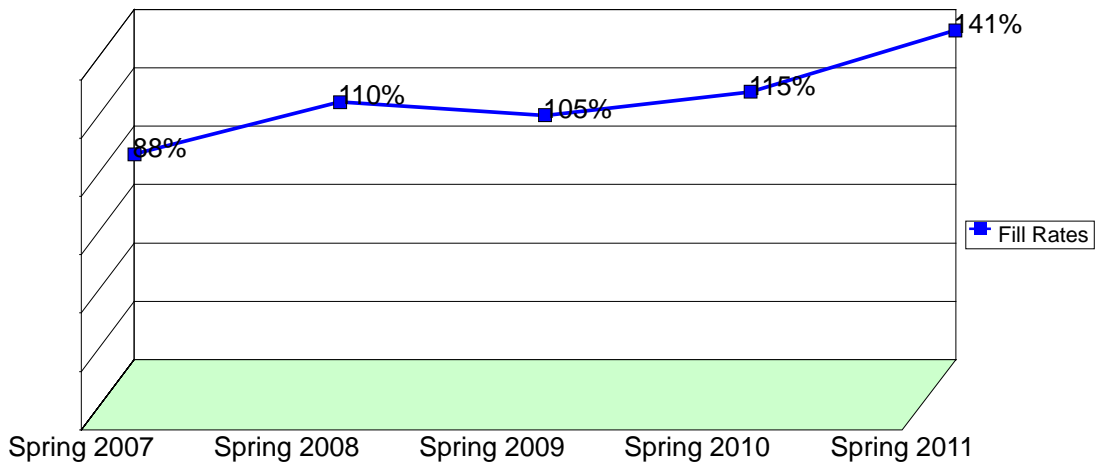
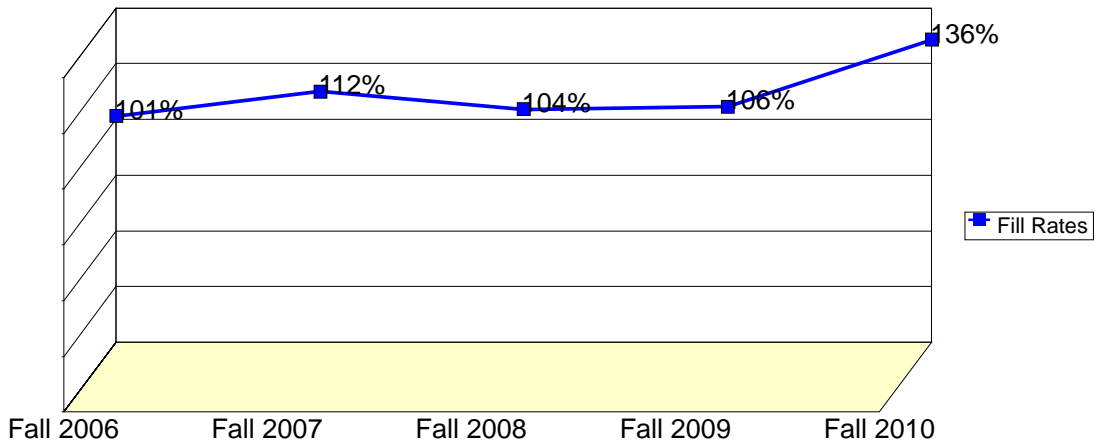
WSCH: Weekly student contact hours generated by census enrollments.

Load: The ratio of WSCH to FTEF, used to measure productivity.

Sections: Total number of sections offered per semester.

Max Enroll: The enrollment capacity or maximum enrollment as defined in curriculum.

Department Fill Rates by Term



Source: SMCCCD Data Warehouse

Fill Rates: The percent a class fills/enrolls based on capacity or enrollment maximum defined in the curriculum (does not include positive attendance or open entry/open exit classes).

Department Productivity: Term by Course

				Census	End of					Sections	Max
				Headcount	Term	FTEF	FTES	WSCH	Load		Enroll
Fall 2006	HSCI	100	General Health Education	36	25	0.20	3.60	108	540	1	40
		130	Human Sexuality	193	162	1.00	19.61	588	588	5	195
		484	Medical Terminology	30	26	0.10	3.30	99	990	1	30
		680	Gateway to Health Careers	20	18	0.27	3.36	101	378	1	25
Fall 2007	HSCI	100	General Health Education	37	33	0.20	3.70	111	555	1	35
		130	Human Sexuality	190	163	1.00	19.33	580	580	5	175
		484	Medical Terminology	26	22	0.10	2.86	86	858	1	30
Fall 2008	HSCI	100	General Health Education	40	33	0.20	4.00	120	600	1	40
			General Health Science	33	28	0.20	3.63	109	545	1	40
		130	Human Sexuality	210	179	1.00	21.33	640	640	5	195
		484	Medical Terminology	20	16	0.10	2.20	66	660	1	30
Fall 2009	HSCI	100	General Health Education	36	27	0.20	3.60	108	540	1	40
			General Health Science	75	69	0.40	8.13	244	610	2	80
		130	Human Sexuality	204	185	1.00	20.93	628	628	5	195
		484	Medical Terminology	60	52	0.20	5.75	173	863	2	80
Fall 2010	HSCI	100	General Health Science	42	33	0.20	4.20	126	630	1	40
		130	Human Sexuality	92	72	0.40	9.20	276	690	2	80
		484	Medical Terminology	83	77	0.20	8.61	258	1,292	2	80
Spring 2007	HSCI	100	General Health Science	35	23	0.20	3.50	105	525	1	40
		130	Human Sexuality	184	148	1.00	18.64	559	559	5	200
		484	Medical Terminology	22	18	0.10	2.20	66	660	1	60
		665	§ Anxiety Management	5	5	0.02	0.08	2	137	1	40
		665	§ Coping with Depression	10	10	0.02	0.15	5	274	1	40
		665	§ Anger Management	2	2	0.02	0.03	1	55	1	40
		690	Special Projects	1	1	0.00	0.07	2	#INF	1	5
Spring 2008	HSCI	100	General Health Science	71	60	0.40	7.10	213	533	2	80
		130	Human Sexuality	228	194	1.00	23.18	695	695	5	195
		484	Medical Terminology	31	26	0.10	3.10	93	930	1	30
		690	Special Projects	1	1	0.00	0.07	2	#INF	1	10
Spring 2009	HSCI	100	General Health Science	115	100	0.60	11.50	345	575	3	120
		130	Human Sexuality	204	178	1.00	20.97	629	629	5	195
		484	Medical Terminology	58	47	0.20	5.80	174	870	2	70
		690	Special Projects	0	0	0.00				1	10
Spring 2010	HSCI	100	General Health Science	39	31	0.20	3.90	117	585	1	40
		130	Human Sexuality	229	197	1.00	23.36	701	701	5	195
		484	Medical Terminology	58	54	0.20	5.80	174	870	2	80
		690	Special Projects	1	0	0.00	0.03	1	#INF	1	10
Spring 2011	HSCI	100	General Health Science	52	48	0.20	5.20	156	780	1	40
		130	Human Sexuality	86	77	0.40	8.60	258	645	2	80
		484	Medical Terminology	138	126	0.20	13.80	414	2,070	2	151
Summer 2006	HSCI	100	General Health Science	33	24	0.20	3.11	93	466	1	35
		130	Human Sexuality	53	42	0.40	5.39	162	404	2	85
Summer 2007	HSCI	100	General Health Education	29	25	0.20	2.73	82	409	1	35
		130	Human Sexuality	57	46	0.40	5.36	161	402	2	75
Summer 2008	HSCI	100	General Health Education	36	30	0.20	3.57	107	535	1	40
		130	Human Sexuality	64	57	0.40	6.41	192	480	2	70
		880	§ Hospital Unit Assistant Train.	19	16	0.91	12.03	361	398	1	10

				Census Headcount	End of Term Headcount	FTEF	FTES	WSCH	Load	Sections	Max Enroll
Summer 2009	HSCI	100	General Health Education	41	38	0.20	4.22	127	633	1	40
		130	Human Sexuality	73	61	0.40	7.20	216	540	2	80
		484	Medical Terminology	38	28	0.10	3.20	96	960	1	35
Summer 2(HSCI	484	Medical Terminology	35	32	0.10	3.50	105	1,050	1	35