

Foreign Language Department Student Characteristics 2006/07 through 2010/11

Unique Headcount by Term

FA06	FA07	FA08	FA09	FA10	SP07	SP08	SP09	SP10	SP11	SU06	SU07	SU08	SU09	SU10
470	459	408	437	503	449	443	438	493	476	219	194	211	247	141

Unique Headcount by Gender

	2006/07		2007/08		2008/09		2009/10		Change 08/09-09/10		5 Year Row Total & Average		
Female	539	54%	588	58%	551	58%	531	55%	570	53%	7%	2,779	55%
Male	428	43%	401	40%	394	40%	367	41%	462	44%	26%	2,052	42%
Unreported	27	3%	15	2%	19	2%	32	4%	28	3%	-13%	121	3%
Column Total	994	100%	1,004	100%	964	100%	930	100%	1,060	100%	14%	4,952	100%

Unique Headcount by Ethnicity

	2006/07		2007/08		2008/09		2008/09		2009/10		Change 08/09-09/10		5 Year Row Total & Average	
African American	33	4%	35	3%	32	4%	31	3%	43	3%	39%	174	3%	
Asian	217	23%	207	23%	193	22%	178	19%	197	18%	11%	992	21%	
Filipino	245	23%	204	20%	187	20%	208	20%	204	19%	-2%	1,048	20%	
Hispanic	175	18%	195	19%	194	19%	188	19%	188	18%	0%	940	19%	
White	222	21%	207	22%	185	19%	198	19%	234	21%	18%	1,046	20%	
Other	42	4%	25	3%	11	1%	5	0%	4	0%	-20%	87	2%	
Unknown	70	7%	97	11%	128	14%	186	19%	190	20%	2%	671	15%	
Column Total	1,004	100%	970	100%	930	100%	994	100%	1,060	100%	7%	4,958	100%	

Unique Headcount by Age

	2006/07		2007/08		2008/09		2009/10		Change 08/09-09/10		5 Year Row Total & Average		
Under 18	127	17%	152	19%	129	21%	133	21%	114	14%	-14%	655	18%
Age 18-22	516	56%	440	44%	426	44%	448	50%	544	57%	21%	2,374	51%
Age 23-28	202	17%	191	19%	213	18%	167	15%	196	15%	17%	969	17%
Age 29-39	80	6%	122	12%	100	9%	91	7%	107	7%	18%	500	8%
Age 40-49	41	3%	61	4%	43	3%	42	3%	52	4%	24%	239	3%
Age 50-59	26	2%	33	2%	44	3%	34	2%	33	2%	-3%	170	2%
Age 60+	7	0%	13	1%	16	1%	19	2%	18	1%	-5%	73	1%
Column Total	999	100%	1,012	100%	971	100%	934	100%	1,064	100%	14%	4,980	100%

Source: SMCCCD Data Warehouse

*Note: Counts and percents are based on census figures.

**Note: The variations in total numbers each year within the demographic segments are due to missing data points, and, in the case of age, also due to students crossing a category threshold during a year (18-22 in Fall, 23-28 in Spring).

Unique Headcount by Status

			2006/07		2007/08		2008/09		2009/10		Change	5 Year Row	
											08/09-09/10	Total & Average	
Continuing	658	63%	528	49%	529	46%	540	50%	639	58%	18%	2,894	55%
Currently K-12	132	17%	151	19%	124	20%	125	20%	113	14%	-10%	645	18%
First-Time	34	4%	54	6%	60	8%	53	7%	63	7%	19%	264	6%
First-Time Transfer	82	8%	112	12%	111	15%	101	13%	125	13%	24%	531	12%
Returning	63	5%	101	8%	93	6%	92	7%	83	6%	-10%	432	6%
Returning Transfer	45	2%	88	6%	85	5%	58	3%	64	3%	10%	340	3%
Column Total	1,014	100%	1,034	100%	1,002	100%	969	100%	1,087	100%	12%	5,106	100%

Unique Headcount by Course-Taking Pattern (Fall and Spring only)

			2006/07		2007/08		2008/09		2009/10		Change	5 Year Row	
											08/09-09/10	Total & Average	
Day	540	56%	411	42%	387	43%	404	45%	489	48%	21%	2,231	48%
Day and Evening	5	0%	4	0%	3	0%	2	0%	3	0%	50%	17	0%
Evening	460	43%	606	58%	591	57%	545	55%	582	52%	7%	2,784	52%
Column Total	1,005	100%	1,021	100%	981	100%	951	100%	1,074	100%	13%	5,032	100%

Unique Headcount by Educational Goal

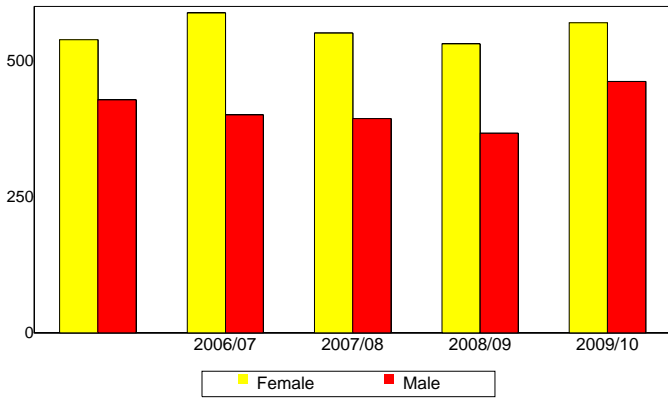
			2006/07		2007/08		2008/09		2009/10		Change	5 Year Row	
											08/09-09/10	Total & Average	
Transfer	521	52%	601	57%	399	36%	370	38%	461	44%	25%	2,352	45%
AA/AS w/o Transfer	30	2%	31	3%	27	3%	31	3%	44	4%	42%	163	3%
Certificate w/o Transfer	13	1%	3	0%	7	0%	10	1%	17	2%	70%	50	1%
Acquire/Update Job Skills	41	4%	58	5%	39	4%	57	5%	65	5%	14%	260	4%
Complete HS Credits	72	9%	50	6%	95	14%	97	15%	81	9%	-16%	395	11%
Educational Development	60	5%	132	13%	89	9%	90	9%	81	6%	-10%	452	8%
Formulate Career Plans/G	9	1%	3	0%	8	1%	9	1%	17	2%	89%	46	1%
Improve Basic Skills	26	3%	9	1%	38	4%	27	3%	36	3%	33%	136	3%
Maintain Certificate/Licens	7	1%			4	0%	6	0%	4	0%	-33%	21	0%
Undecided/Unreported	221	22%	134	14%	303	30%	240	24%	267	25%	11%	1,165	23%
Column Total	1,000	100%	1,021	100%	1,009	100%	937	100%	1,073	100%	15%	5,040	100%

Source: SMCCCD Data Warehouse

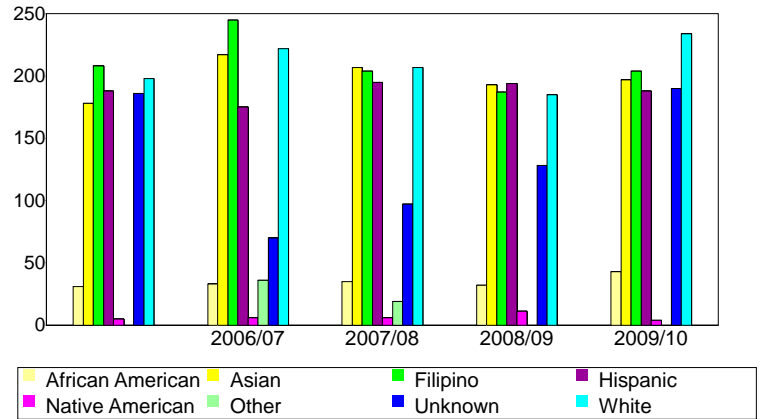
*Note: Counts and percents are based on census figures for summer, fall and spring.

**Note: The variations in total numbers each year within the Status, Course-Taking, and Educational Goal tables are due to missing data points and also due to students changing Status, Pattern, or Educational Goal within a given year - e.g. "First Time Student" in Fall and "Continuing Student" in Spring.

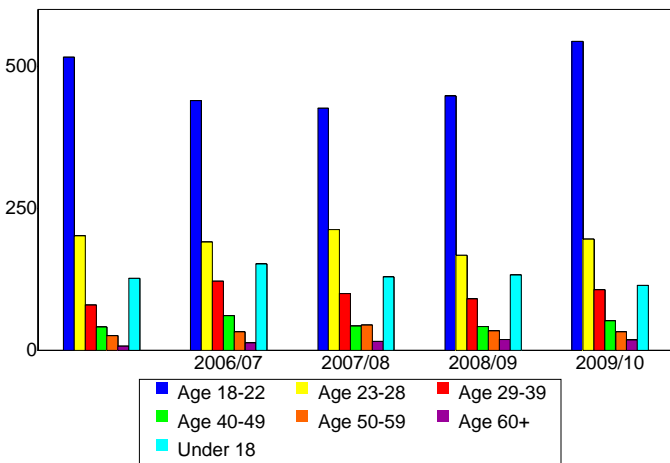
Unique Headcount by Gender



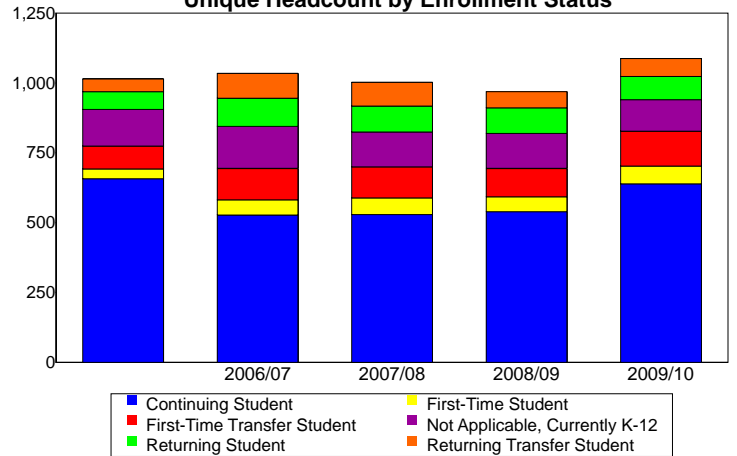
Unique Headcount by Ethnicity



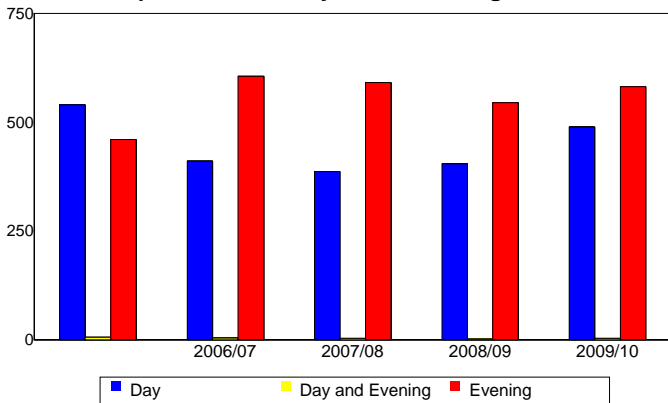
Unique Headcount by Student Age



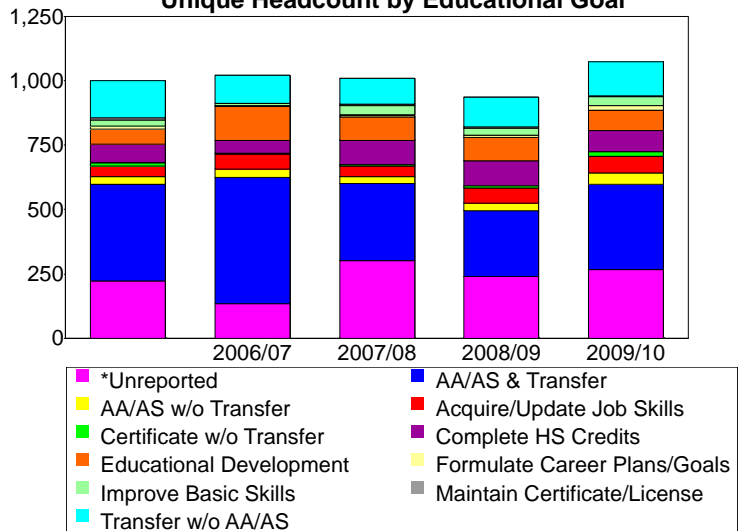
Unique Headcount by Enrollment Status



Unique Headcount by Course-Taking Pattern



Unique Headcount by Educational Goal



Source: SMCCCD Data Warehouse