

Emergency Medical Care Department Productivity: By Year and By Term 2006/07 through 2010/11

	Census Headcount	End of Term Headcount	FTEF	FTES	WSCH	Load	Sections	Max Enroll
2006/07	192	175	2.41	42.63	1,279	530	11	249
2007/08	229	203	2.27	46.85	1,405	618	12	262
2008/09	223	198	2.28	50.83	1,525	669	11	265
2009/10	224	191	2.83	79.31	2,379	840	9	211
2010/11	185	165	2.10	45.98	1,379	657	9	210

	Census Headcount	End of Term Headcount	FTEF	FTES	WSCH	Load	Sections	Max Enroll
Fall 2006	87	78	1.14	20.83	625	548	5	110
Fall 2007	116	103	1.07	26.86	806	756	6	122
Fall 2008	105	92	1.07	22.85	685	639	5	123
Fall 2009	119	101	1.07	34.49	1,035	964	5	110
Fall 2010	67	55	0.93	22.48	674	728	3	75
Spring 2007	98	92	1.14	21.49	645	566	5	119
Spring 2008	96	85	1.07	19.07	572	533	5	115
Spring 2009	104	94	1.07	27.98	840	782	5	117
Spring 2010	52	38	0.97	32.03	961	987	2	50
Spring 2011	96	89	1.07	22.68	680	634	5	110
Summer 2006	7	5	0.13	0.30	9	69	1	20
Summer 2007	17	15	0.13	0.91	27	206	1	25
Summer 2008	14	12	0.13	0.00	0	0	1	25
Summer 2009	53	52	0.79	12.80	384	488	2	51
Summer 2010	22	21	0.10	0.82	25	247	1	25

Source: SMCCCD Data Warehouse

Census Headcount: Number of duplicated headcount at final census.

End of Term Headcount: Number of duplicated headcount at the end of the term.

FTEF: Total number of full time equivalent faculty assigned.

FTES: Total number of full time equivalent students enrolled at first census.

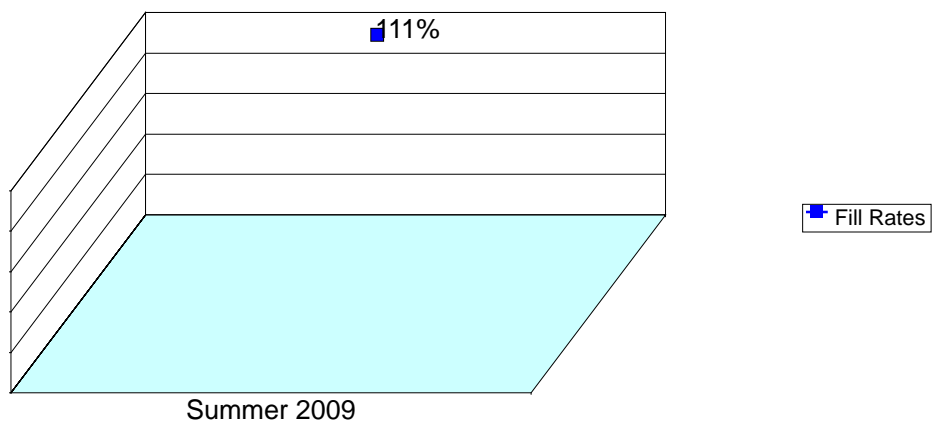
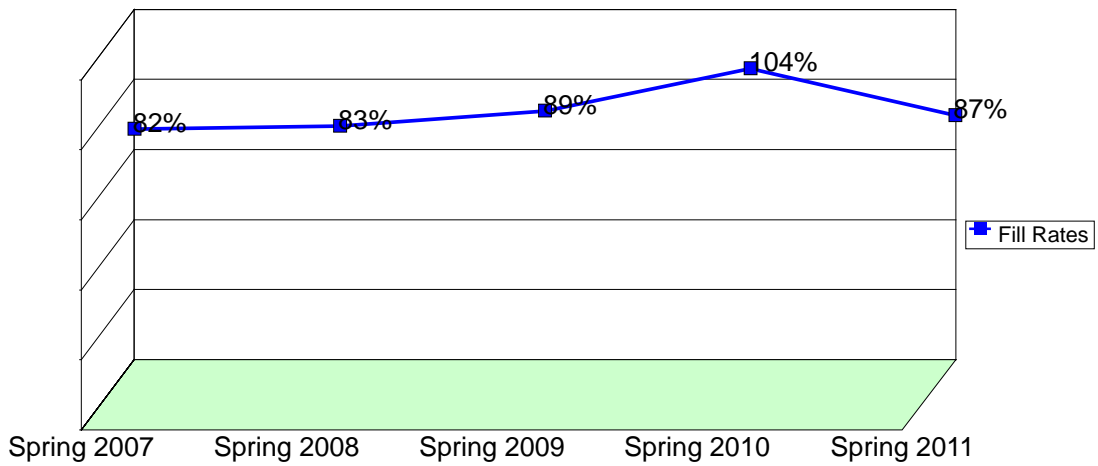
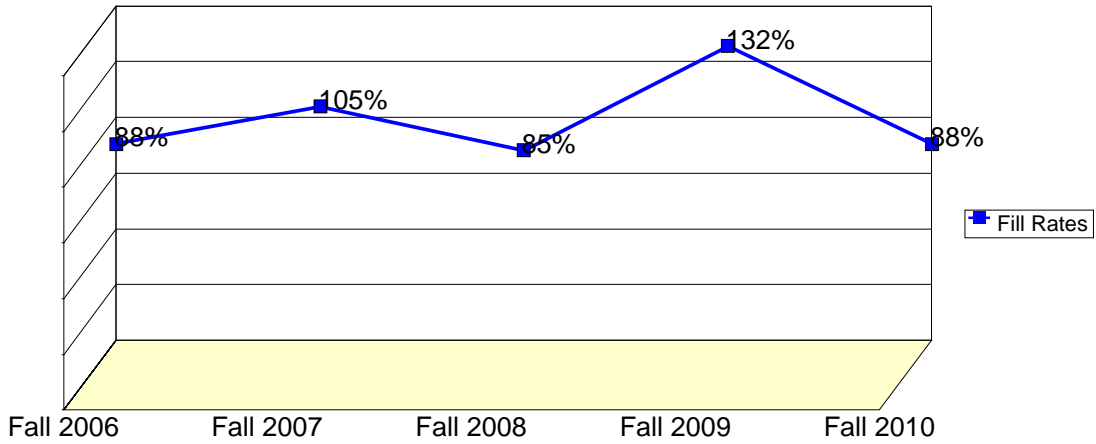
WSCH: Weekly student contact hours generated by census enrollments.

Load: The ratio of WSCH to FTEF, used to measure productivity.

Sections: Total number of sections offered per semester.

Max Enroll: The enrollment capacity or maximum enrollment as defined in curriculum.

Department Fill Rates by Term



Source: SMCCCD Data Warehouse

Fill Rates: The percent a class fills/enrolls based on capacity or enrollment maximum defined in the curriculum (does not include positive attendance or open entry/open exit classes).

Department Productivity: Term by Course

				Census Headcount	End of Term Headcount	FTEF	FTES	WSCH	Load	Sections	Max Enroll
Fall 2006	EMC.	410	Emergency Medical Tech I	44	41	1.04	20.24	607	584	2	50
		425	CPR: Health Care Provider	43	37	0.10	0.59	18	179	3	60
Fall 2007	EMC.	410	Emergency Medical Tech I	52	40	0.93	25.83	775	830	2	50
		425	CPR: Health Care Provider	64	63	0.13	1.04	31	233	4	72
Fall 2008	EMC.	410	Emergency Medical Tech I	46	33	0.97	22.85	685	704	2	54
		425	CPR: Health Care Provider	59	59	0.10	0.00	0	0	3	69
Fall 2009	EMC.	410	Emergency Medical Tech I	66	48	0.97	33.88	1,016	1,044	2	50
		425	CPR: Health Care Provider	53	53	0.10	0.61	18	182	3	60
Fall 2010	EMC.	410	Emergency Medical Tech I	44	33	0.89	22.15	664	744	2	50
		425	CPR: Health Care Provider	23	22	0.03	0.34	10	302	1	25
Spring 2007	EMC.	410	Emergency Medical Tech I	46	41	1.04	20.70	621	597	2	50
		425	CPR: Health Care Provider	52	51	0.10	0.79	24	238	3	69
Spring 2008	EMC.	410	Emergency Medical Tech I	39	29	0.97	18.20	546	561	2	50
		425	CPR: Health Care Provider	57	56	0.10	0.87	26	261	3	65
Spring 2009	EMC.	410	Emergency Medical Tech I	56	46	0.97	27.25	818	840	2	54
		425	CPR: Health Care Provider	48	48	0.10	0.73	22	220	3	63
Spring 2010	EMC.	410	Emergency Medical Tech I	52	38	0.97	32.03	961	987	2	50
Spring 2011	EMC.	410	Emergency Medical Tech I	45	38	0.97	21.90	657	675	2	50
		425	CPR: Health Care Provider	51	51	0.10	0.78	23	233	3	60
Summer 2009	EMC.	415	EMT I Refresher	7	5	0.13	0.30	9	69	1	20
Summer 2010	EMC.	415	EMT I Refresher	17	15	0.13	0.91	27	206	1	25
Summer 2011	EMC.	415	EMT I Refresher	14	12	0.13	0.00	0	0	1	25
Summer 2009	EMC.	410	Emergency Medical Tech I	30	29	0.65	12.80	384	588	1	27
		415	EMT I Refresher	23	23	0.13	0.00	0	0	1	24
Summer 2010	EMC.	415	EMT I Refresher	22	21	0.10	0.82	25	247	1	25