

Dance Department Student Characteristics 2006/07 through 2010/11

Unique Headcount by Term

FA06	FA07	FA08	FA09	FA10	SP07	SP08	SP09	SP10	SP11	SU06	SU07	SU08	SU09	SU10
219	326	390	405	323	314	358	356	346	340	128	195	176	172	30

Unique Headcount by Gender

	2006/07		2007/08		2008/09		2009/10		2010/11		Change 09/10-10/11	5 Year Row Total & Average	
Female	387	70%	513	69%	531	71%	563	74%	459	78%	-18%	2,453	73%
Male	126	26%	184	26%	195	26%	165	22%	124	20%	-25%	794	24%
Unreported	14	4%	27	5%	19	3%	24	3%	11	2%	-54%	95	3%
Column Total	527	100%	724	100%	745	100%	752	100%	594	100%	-21%	3,342	100%

Unique Headcount by Ethnicity

	2006/07		2007/08		2008/09		2009/10		2010/11		Change 09/10-10/11	5 Year Row Total & Average	
African American	17	3%	22	3%	18	2%	27	4%	23	4%	-15%	107	3%
Asian	127	26%	169	25%	169	25%	155	23%	119	21%	-23%	739	24%
Filipino	83	17%	113	16%	134	18%	119	15%	111	19%	-7%	560	17%
Hispanic	116	19%	162	20%	169	21%	161	19%	125	20%	-22%	733	20%
White	120	22%	164	22%	165	21%	165	22%	130	22%	-21%	744	22%
Other	12	2%	17	2%	3	0%	4	0%	1	0%	-75%	37	1%
Unknown	52	11%	79	12%	87	12%	121	16%	85	15%	-30%	424	14%
Column Total	527	100%	726	100%	745	100%	752	100%	594	100%	-21%	3,344	100%

Unique Headcount by Age

	2006/07		2007/08		2008/09		2009/10		2010/11		Change 09/10-10/11	5 Year Row Total & Average	
Under 18	19	5%	21	4%	31	6%	28	5%	16	3%	-43%	115	5%
Age 18-22	172	32%	244	35%	255	39%	258	40%	242	50%	-6%	1,171	40%
Age 23-28	87	16%	129	15%	125	14%	138	16%	126	19%	-9%	605	16%
Age 29-39	88	18%	113	17%	104	14%	125	16%	72	10%	-42%	502	15%
Age 40-49	56	10%	83	12%	94	12%	84	10%	51	6%	-39%	368	10%
Age 50-59	72	13%	94	12%	92	10%	79	9%	58	8%	-27%	395	10%
Age 60+	37	6%	46	6%	50	5%	48	4%	32	4%	-33%	213	5%
Column Total	531	100%	730	100%	751	100%	760	100%	597	100%	-21%	3,369	100%

Source: SMCCCD Data Warehouse

*Note: Counts and percents are based on census figures.

**Note: The variations in total numbers each year within the demographic segments are due to missing data points, and, in the case of age, also due to students crossing a category threshold during a year (18-22 in Fall, 23-28 in Spring).

Unique Headcount by Status

	2006/07		2007/08		2008/09		2009/10		2010/11		Change 09/10-10/11	5 Year Row Total & Average	
Continuing	299	53%	425	53%	465	58%	486	63%	401	66%	-17%	2,076	59%
Currently K-12	23	6%	25	4%	31	5%	25	4%	20	4%	-20%	124	5%
First-Time	40	8%	46	8%	51	9%	37	6%	35	7%	-5%	209	8%
First-Time Transfer	95	22%	110	22%	104	17%	103	17%	63	12%	-39%	475	17%
Returning	67	7%	78	7%	76	7%	75	6%	60	7%	-20%	356	7%
Returning Transfer	36	4%	67	5%	60	4%	61	4%	44	4%	-28%	268	4%
Column Total	560	100%	751	100%	787	100%	787	100%	623	100%	-21%	3,508	100%

Unique Headcount by Course-Taking Pattern (Fall and Spring only)

	2006/07		2007/08		2008/09		2009/10		2010/11		Change 09/10-10/11	5 Year Row Total & Average	
Day	115	19%	178	23%	159	21%	176	25%	178	32%	1%	806	24%
Day and Evening	16	2%	8	1%	8	1%	7	1%	10	2%	43%	49	1%
Evening	409	79%	553	76%	589	79%	576	74%	422	66%	-27%	2,549	75%
Column Total	540	100%	739	100%	756	100%	759	100%	610	100%	-20%	3,404	100%

Unique Headcount by Educational Goal

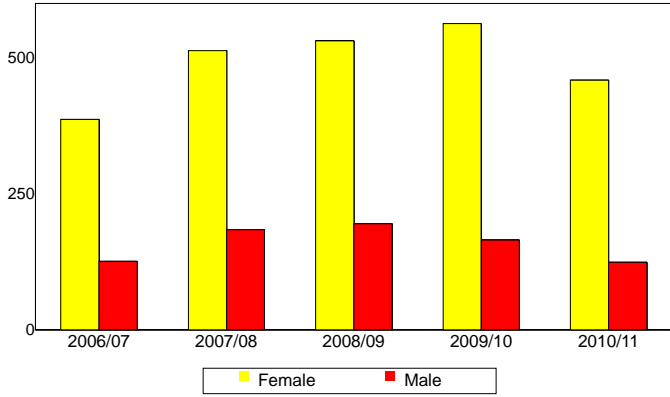
	2006/07		2007/08		2008/09		2009/10		2010/11		Change 09/10-10/11	5 Year Row Total & Average	
Transfer	269	47%	213	27%	241	33%	253	32%	259	46%	2%	1,235	36%
AA/AS w/o Transfer	17	3%	20	2%	30	3%	32	4%	27	4%	-16%	126	3%
Certificate w/o Transfer	5	1%	8	1%	11	1%	11	1%	6	1%	-45%	41	1%
Acquire/Update Job Skills	21	4%	32	3%	42	5%	42	5%	30	4%	-29%	167	4%
Complete HS Credits	7	2%	25	4%	20	4%	16	3%	8	2%	-50%	76	3%
Educational Development	123	23%	139	20%	117	17%	135	18%	74	10%	-45%	588	17%
Formulate Career Plans/Goals			8	1%	6	1%	21	3%	15	3%	-29%	50	2%
Improve Basic Skills	12	3%	49	7%	61	8%	57	8%	38	6%	-33%	217	7%
Maintain Certificate/Licensure	1	0%			4	0%	6	1%	6	1%	0%	17	0%
Undecided/Unreported	91	19%	261	36%	218	28%	189	25%	137	23%	-28%	396	27%
Column Total	546	100%	755	100%	750	100%	762	100%	600	100%	-21%	3,413	100%

Source: SMCCCD Data Warehouse

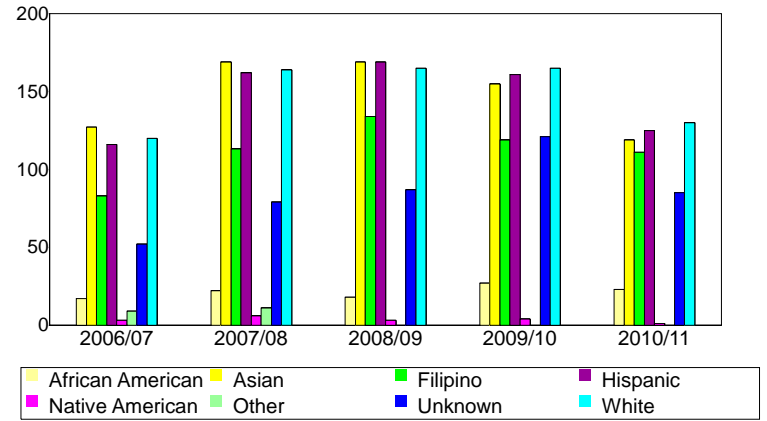
*Note: Counts and percents are based on census figures for summer, fall and spring.

**Note: The variations in total numbers each year within the Status, Course-Taking, and Educational Goal tables are due to missing data points and also due to students changing Status, Pattern, or Educational Goal within a given year - e.g. "First Time Student" in Fall and "Continuing Student" in Spring.

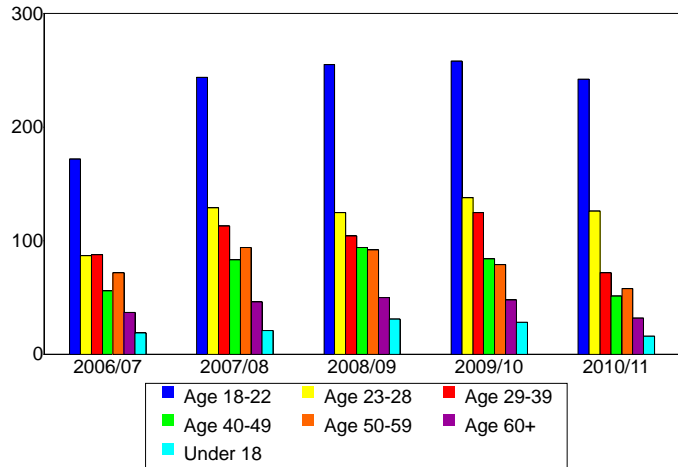
Unique Headcount by Gender



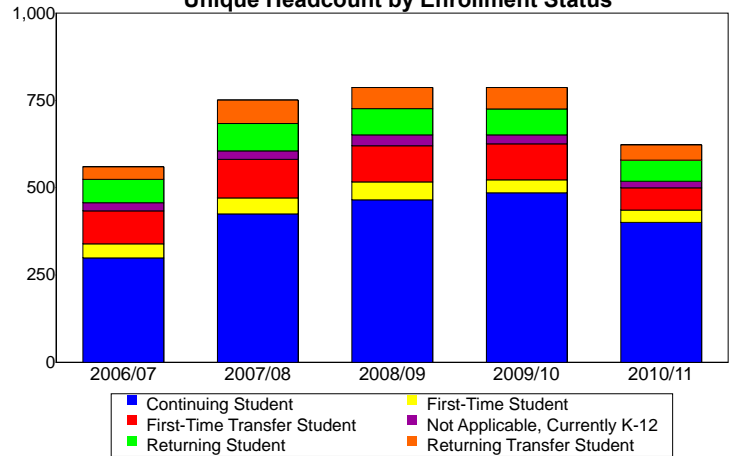
Unique Headcount by Ethnicity



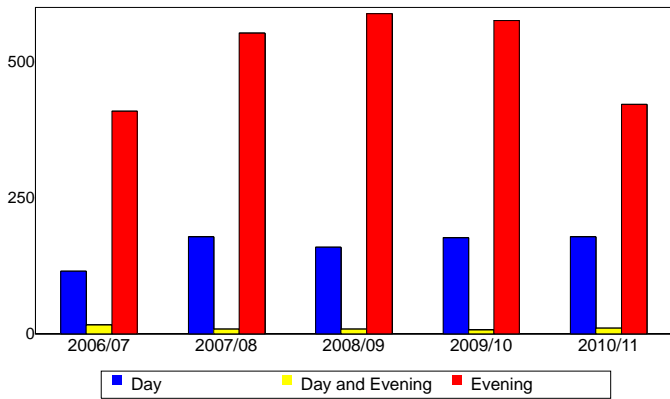
Unique Headcount by Student Age



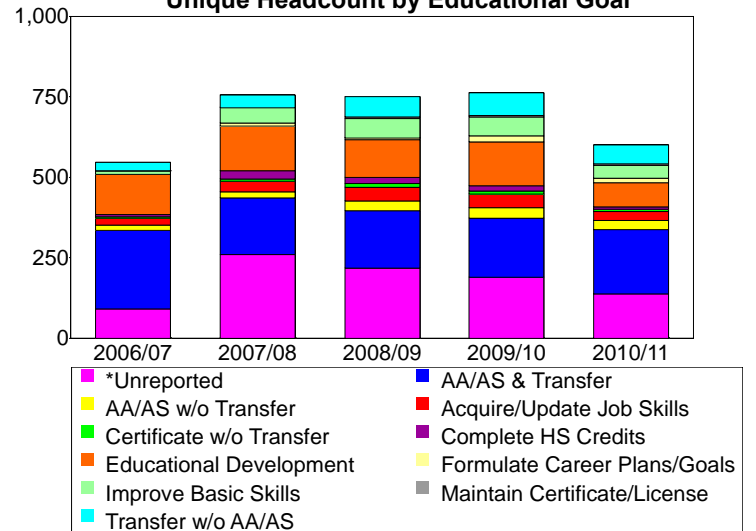
Unique Headcount by Enrollment Status



Unique Headcount by Course-Taking Pattern



Unique Headcount by Educational Goal



Source: SMCCCD Data Warehouse