

Cosmetology Department Student Characteristics 2006/07 through 2010/11

Unique Headcount by Term

FA06	FA07	FA08	FA09	FA10	SP07	SP08	SP09	SP10	SP11	SU06	SU07	SU08	SU09	SU10
151	153	208	252	138	126	131	223	205	173	83	91	109	123	60

Unique Headcount by Gender

	2006/07		2007/08		2008/09		2009/10		2010/11		Change 09/10-10/11	5 Year Row Total & Average	
Female	174	91%	206	92%	322	88%	355	91%	217	93%	-39%	1,274	91%
Male	15	8%	15	7%	31	10%	35	7%	13	6%	-63%	109	8%
Unreported	1	1%	2	1%	9	3%	8	2%	3	1%	-63%	23	2%
Column Total	190	100%	223	100%	362	100%	398	100%	233	100%	-41%	1,406	100%

Unique Headcount by Ethnicity

	2006/07		2007/08		2008/09		2009/10		2010/11		Change 09/10-10/11	5 Year Row Total & Average	
African American	8	4%	5	2%	16	6%	23	7%	13	5%	-43%	65	5%
Asian	34	17%	53	19%	83	23%	81	23%	49	21%	-40%	300	21%
Filipino	17	10%	17	10%	39	11%	31	9%	19	7%	-39%	123	9%
Hispanic	49	23%	60	29%	87	24%	77	16%	54	22%	-30%	327	22%
White	62	33%	60	24%	85	20%	118	28%	63	29%	-47%	388	26%
Other	12	6%	6	3%	4	1%	4	0%	1	0%	-75%	27	1%
Unknown	8	5%	25	13%	48	16%	66	17%	34	16%	-48%	181	14%
Column Total	190	100%	226	100%	362	100%	400	100%	233	100%	-42%	1,411	100%

Unqie Headcount by Age

	2006/07		2007/08		2008/09		2009/10		2010/11		Change 09/10-10/11	5 Year Row Total & Average	
Under 18	3	1%	2	1%	40	11%	18	5%	8	3%	-56%	71	5%
Age 18-22	83	47%	87	46%	112	41%	125	41%	96	49%	-23%	503	44%
Age 23-28	56	30%	67	31%	73	20%	78	21%	67	26%	-14%	341	24%
Age 29-39	39	17%	42	13%	62	16%	83	18%	40	15%	-52%	266	16%
Age 40-49	12	3%	20	4%	42	7%	55	9%	19	5%	-65%	148	6%
Age 50-59	6	2%	14	5%	34	4%	36	4%	12	2%	-67%	102	4%
Age 60+	1	0%	1	0%	8	0%	12	2%			-100%	22	1%
Column Total	200	100%	233	100%	371	100%	407	100%	242	100%	-41%	1,453	100%

Source: SMCCCD Data Warehouse

*Note: Counts and percents are based on census figures.

**Note: The variations in total numbers each year within the demographic segments are due to missing data points, and, in the case of age, also due to students crossing a category threshold during a year (18-22 in Fall, 23-28 in Spring).

Unique Headcount by Status

	2006/07		2007/08		2008/09		2009/10		2010/11		Change 09/10-10/11	5 Year Row Total & Average
Continuing	154	78%	173	70%	211	59%	270	67%	170	72%	-37%	978 68%
Currently K-12					43	12%	17	4%	10	3%	-41%	70 5%
First-Time	22	8%	21	8%	36	9%	24	6%	27	9%	13%	130 8%
First-Time Transfer	18	6%	34	15%	47	12%	55	13%	26	8%	-53%	180 11%
Returning	24	6%	37	5%	52	5%	51	6%	16	3%	-69%	180 5%
Returning Transfer	14	2%	13	2%	30	3%	41	4%	28	4%	-32%	126 3%
Column Total	232	100%	278	100%	419	100%	458	100%	277	100%	-40%	1,664 100%

Unique Headcount by Course-Taking Pattern (Fall and Spring only)

	2006/07		2007/08		2008/09		2009/10		2010/11		Change 09/10-10/11	5 Year Row Total & Average
Day	109	62%	100	50%	162	51%	162	52%	135	64%	-17%	668 55%
Day and Evening	2	1%	18	5%	19	4%	7	1%	2	0%	-71%	48 2%
Evening	81	38%	124	45%	204	45%	244	47%	100	36%	-59%	753 43%
Column Total	192	100%	242	100%	385	100%	413	100%	237	100%	-43%	1,469 100%

Unique Headcount by Educational Goal

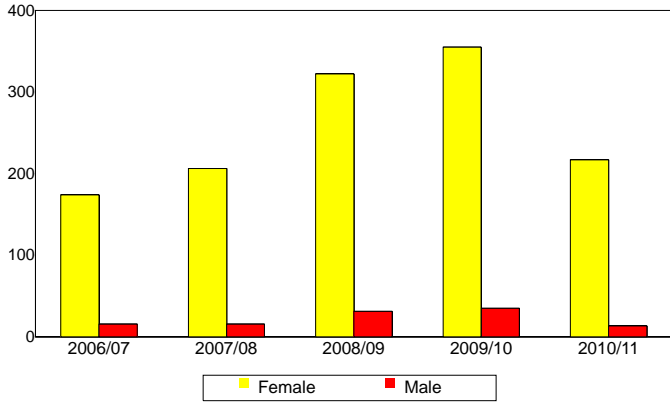
	2006/07		2007/08		2008/09		2009/10		2010/11		Change 09/10-10/11	5 Year Row Total & Average
Transfer	86	40%	55	25%	52	17%	72	18%	40	16%	-44%	305 21%
AA/AS w/o Transfer	16	8%	17	7%	18	3%	20	4%	12	5%	-40%	33 5%
Certificate w/o Transfer	34	19%	43	21%	48	17%	51	17%	54	28%	6%	230 20%
Acquire/Update Job Skills	48	20%	38	14%	59	12%	70	15%	45	17%	-36%	260 15%
Complete HS Credits	1	1%			40	11%	13	3%	6	2%	-54%	30 4%
Educational Development	5	1%	9	3%	32	5%	27	5%	11	4%	-59%	34 4%
Formulate Career Plans/Goals			5	2%	9	2%	11	2%	4	1%	-64%	29 2%
Improve Basic Skills			2	0%	10	1%	8	1%	2	1%	-75%	22 1%
Maintain Certificate/Licensure	1	1%	22	10%	41	13%	48	17%	39	19%	-19%	151 13%
Undecided/Unreported	23	11%	51	19%	61	18%	82	18%	25	9%	-70%	242 15%
Column Total	214	100%	242	100%	370	100%	402	100%	238	100%	-41%	1,466 100%

Source: SMCCCD Data Warehouse

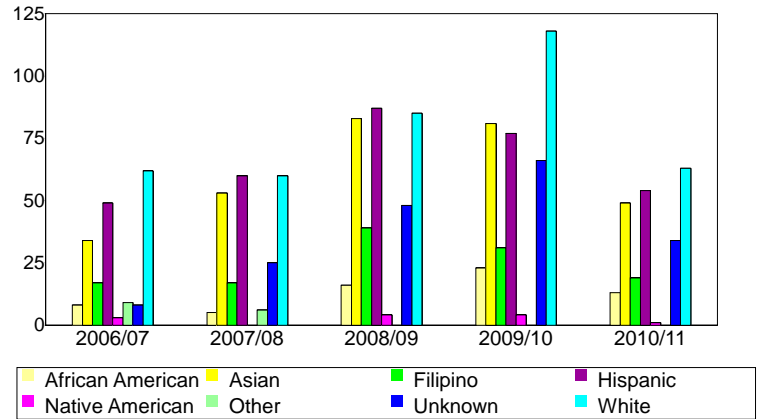
*Note: Counts and percents are based on census figures for summer, fall and spring.

**Note: The variations in total numbers each year within the Status, Course-Taking, and Educational Goal tables are due to missing data points and also due to students changing Status, Pattern, or Educational Goal within a given year - e.g. "First Time Student" in Fall and "Continuing Student" in Spring.

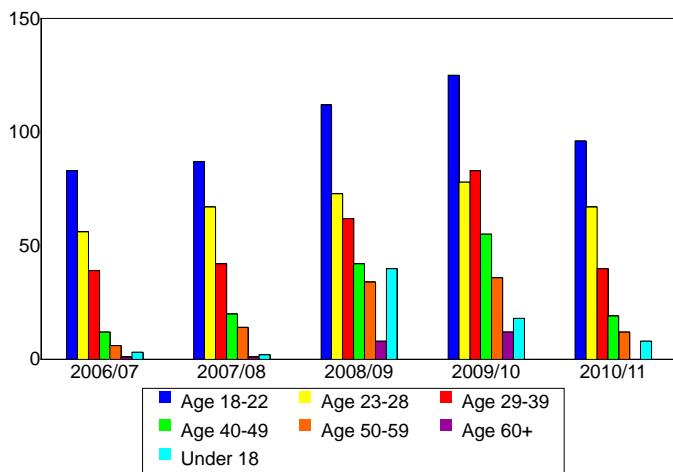
Unique Headcount by Gender



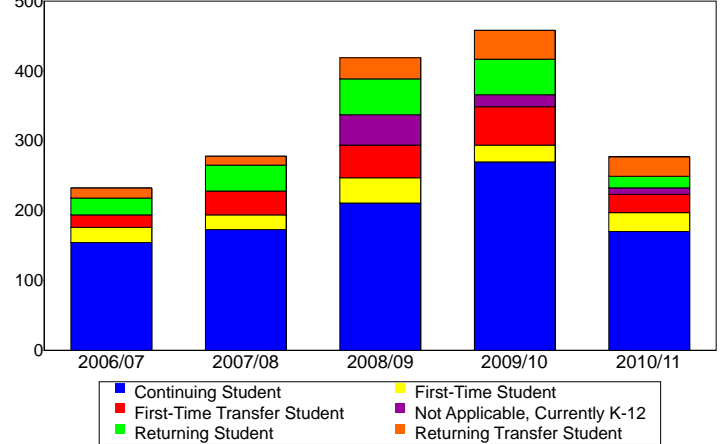
Unique Headcount by Ethnicity



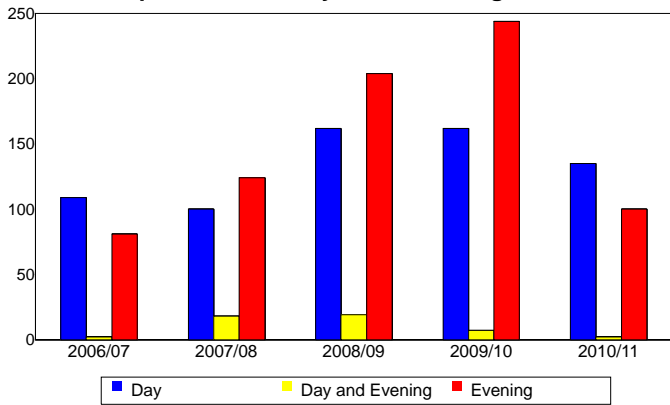
Unique Headcount by Student Age



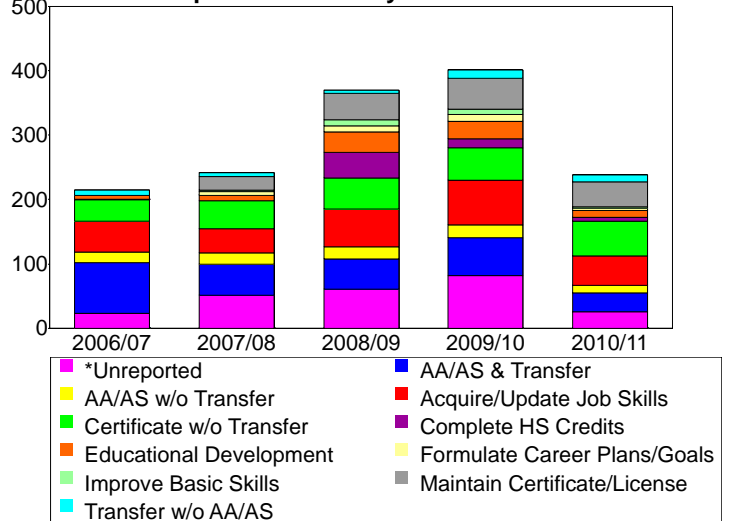
Unique Headcount by Enrollment Status



Unique Headcount by Course-Taking Pattern



Unique Headcount by Educational Goal



Source: SMCCCD Data Warehouse