

Computer Science Department Productivity: By Year and By Term 2006/07 through 2010/11

	Census Headcount	End of Term Headcount	FTEF	FTES	WSCH	Load	Sections	Max Enroll
2006/07	130	100	2.46	18.75	562	229	20	334
2007/08	161	133	1.97	23.86	716	364	16	256
2008/09	122	83	1.87	16.99	510	273	16	236
2009/10	162	108	2.07	23.26	698	338	18	263
2010/11	148	102	1.97	22.24	667	339	17	263

	Census Headcount	End of Term Headcount	FTEF	FTES	WSCH	Load	Sections	Max Enroll
Fall 2006	54	42	1.22	6.93	208	170	10	162
Fall 2007	82	66	0.93	11.91	357	383	8	129
Fall 2008	59	43	0.83	8.51	255	306	8	121
Fall 2009	75	52	1.03	11.27	338	327	9	139
Fall 2010	74	52	1.03	11.60	348	337	9	144
Spring 2007	76	58	1.23	11.81	354	287	10	172
Spring 2008	79	67	1.03	11.96	359	347	8	128
Spring 2009	63	40	1.03	8.48	255	246	8	115
Spring 2010	87	56	1.03	11.99	360	348	9	125
Spring 2011	74	50	0.93	10.64	319	342	8	119

Source: SMCCCD Data Warehouse

Census Headcount: Number of duplicated headcount at final census.

End of Term Headcount: Number of duplicated headcount at the end of the term.

FTEF: Total number of full time equivalent faculty assigned.

FTES: Total number of full time equivalent students enrolled at first census.

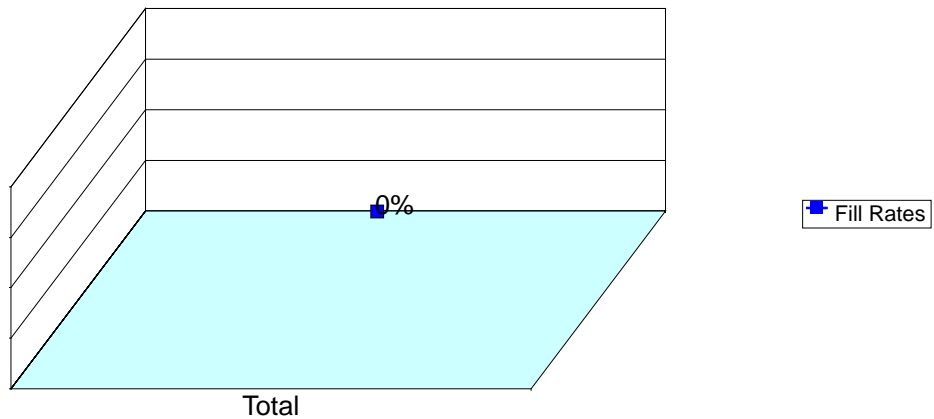
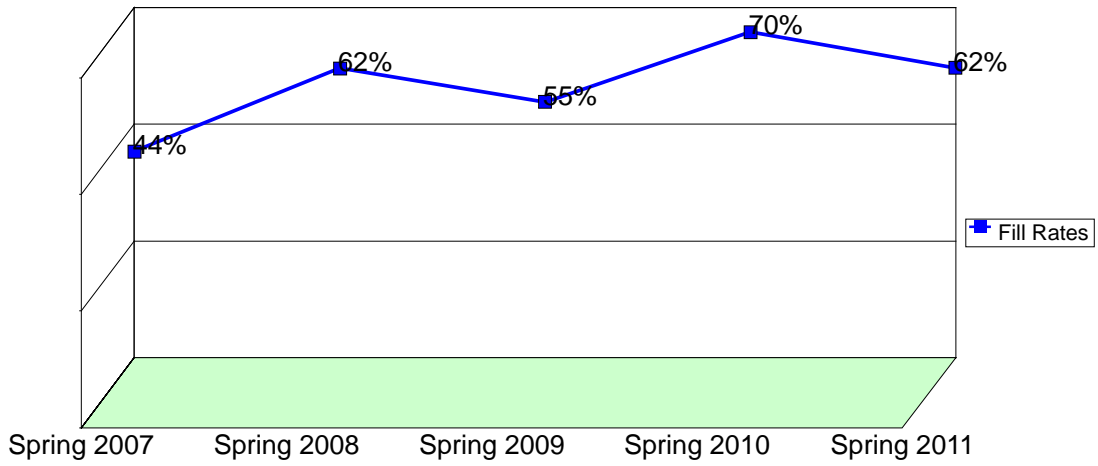
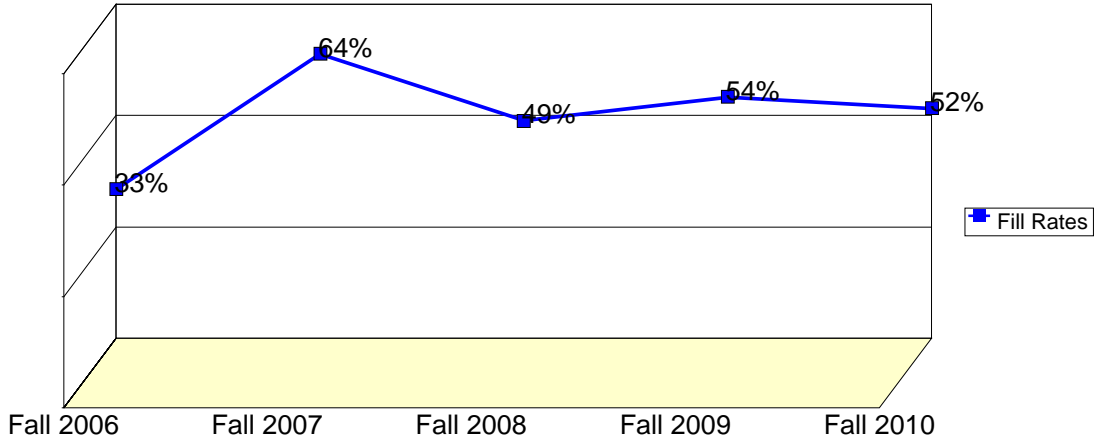
WSCH: Weekly student contact hours generated by census enrollments.

Load: The ratio of WSCH to FTEF, used to measure productivity.

Sections: Total number of sections offered per semester.

Max Enroll: The enrollment capacity or maximum enrollment as defined in curriculum.

Department Fill Rates by Term



Source: SMCCCD Data Warehouse

Fill Rates: The percent a class fills/enrolls based on capacity or enrollment maximum defined in the curriculum (does not include positive attendance or open entry/open exit classes).

Department Productivity: Term by Course

				Census	End of	FTEF	FTES	WSCH	Load	Sections	Max
				Headcount	Term						Enroll
Fall 2006	COMP	118	Intro to Obj-Oriented Prgrm De	12	6	0.34	3.20	96	282	1	35
		155	Computer Program. Visual Basic	18	14	0.20	1.98	59	297	1	25
		412	Flash I	1	1	0.05	0.09	3	51	1	24
		413	Flash II	2	2	0.05	0.10	3	60	1	24
		423	JavaScript	1	1	0.05	0.05	2	30	1	32
		451	PC Configuration & Repair	2	2	0.23	0.61	18	79	1	24
		484	Adv. Routing Concepts & Apps	0	0	0.10	0.00	0	0	1	24
		665	Intro Linux Admin	11	9	0.05	0.55	17	332	1	25
			Intro to Using Linux	7	7	0.05	0.35	11	211	1	25
680	Advanced Network Sec.	0	0	0.10	0.00	0	0	1	25		
Fall 2007	COMP	155	Computer Program. Visual Basic	18	13	0.20	2.88	86	432	1	25
		312	Installing/Using Linux -PC OS	10	10	0.05	0.63	19	376	1	25
		314	Managing a Linux System	11	11	0.05	0.69	21	414	1	25
		355	Introduction to Oracle - SQL	23	18	0.20	5.29	159	794	1	25
		412	Flash I	5	3	0.05	0.20	6	120	1	35
		413	Flash II	8	7	0.05	0.40	12	240	1	24
		451	PC Configuration & Repair	5	3	0.23	1.53	46	197	1	24
		484	Adv. Routing Concepts & Apps	2	1	0.10	0.29	9	86	1	24
Fall 2008	COMP	155	Computer Program. Visual Basic	22	16	0.20	3.74	112	561	1	25
		312	Installing/Using Linux -PC OS	14	11	0.05	0.88	26	526	1	25
		314	Managing a Linux System	9	9	0.05	0.56	17	338	1	25
		412	Flash I	2	2	0.05	0.10	3	60	1	35
		413	Flash II	0	0	0.05				1	35
		451	PC Configuration & Repair	9	3	0.23	2.76	83	355	1	24
		484	Adv. Routing Concepts & Apps	2	1	0.10	0.30	9	90	1	24
		486	Network Security	1	1	0.10	0.17	5	50	1	24
Fall 2009	COMP	155	Computer Program. Visual Basic	25	20	0.20	4.42	133	663	1	25
		412	Flash I	10	6	0.05	0.50	15	300	1	35
		413	Flash II	8	1	0.05	0.40	12	240	1	35
		451	PC Configuration & Repair	6	6	0.23	1.84	55	237	1	24
		482	Introduction to Routers	12	9	0.10	1.88	56	564	1	25
		483	Network Switches-Concepts/Apps	5	3	0.10	0.75	23	225	1	30
		484	Adv. Routing Concepts & Apps	1	0	0.10	0.16	5	47	1	24
		485	Troubleshooting Internetwork	1	1	0.10	0.16	5	47	1	30
		486	Network Security	7	6	0.10	1.17	35	350	1	24
Fall 2010	COMP	155	Computer Program. Visual Basic	18	13	0.20	2.94	88	441	1	30
		412	Flash I	8	4	0.05	0.40	12	240	1	35
		413	Flash II	12	4	0.05	0.60	18	360	1	35
		451	PC Configuration & Repair	14	12	0.23	4.29	129	552	1	24
		482	Introduction to Routers	3	2	0.10	0.47	14	141	1	25
		483	Network Switches-Concepts/Apps	8	6	0.10	1.20	36	360	1	30
		484	Adv. Routing Concepts & Apps	3	3	0.10	0.45	14	135	1	24
		485	Troubleshooting Internetwork	5	5	0.10	0.75	23	225	1	30
		486	Network Security	3	3	0.10	0.50	15	150	1	24
Spring 2007	COMP	155	Computer Program VISUAL BASIC	14	12	0.20	2.10	63	315	1	25
		250	Programming Methods I: C++	14	9	0.20	2.80	84	420	1	25
		315	Managing Linux-Based Internet	4	4	0.05	0.44	13	264	1	25

				Census Headcount	End of Term Headcount	FTEF	FTES	WSCH	Load	Sections	Max Enroll
		316	Managing Linux-Based Intra-net	5	5	0.05	0.55	17	330	1	25
		355	Introduction to Oracle - SQL	9	4	0.20	1.80	54	270	1	25
		412	Flash I	6	6	0.05	0.30	9	180	1	30
		413	Flash II	7	7	0.05	0.35	11	210	1	30
		451	PC Configuration & Repair	8	5	0.23	2.40	72	309	1	24
		481	Network Systems Administration	4	3	0.10	0.57	17	172	1	30
		486	Network Security	5	3	0.10	0.50	15	150	1	30
Spring 2008	COMP	155	Computer Program VISUAL BASIC	20	19	0.20	3.00	90	450	1	24
		316	Managing Linux-Based Intra-net	9	9	0.10	1.41	42	423	1	24
		355	Introduction to Oracle - SQL	12	8	0.20	2.64	79	396	1	25
		412	Flash I	14	11	0.05	0.60	18	360	1	30
		413	Flash II	8	7	0.05	0.40	12	240	1	30
		451	PC Configuration & Repair	10	7	0.23	3.07	92	394	1	24
		481	Network Systems Administration	4	4	0.10	0.56	17	168	1	24
		486	Network Security	2	2	0.10	0.28	8	84	1	25
Spring 2009	COMP	155	Computer Program VISUAL BASIC	18	12	0.20	2.70	81	405	1	24
		316	Managing Linux-Based Intra-net	8	6	0.10	1.25	38	376	1	24
		412	Flash I	13	6	0.10	0.65	20	195	1	35
		413	Flash II	7	2	0.10	0.30	9	90	1	35
		451	PC Configuration & Repair	7	6	0.23	2.15	64	276	1	24
		481	Network Systems Administration	5	3	0.10	0.70	21	210	1	24
		484	Adv. Routing Concepts & Apps	2	2	0.10	0.31	9	94	1	24
		486	Network Security	3	3	0.10	0.42	13	126	1	24
Spring 2010	COMP	155	Computer Program VISUAL BASIC	22	12	0.20	3.52	106	528	1	24
		412	Flash I	16	10	0.05	0.80	24	480	1	35
		413	Flash II	8	1	0.05	0.40	12	240	1	35
		451	PC Configuration & Repair	7	6	0.23	2.15	64	276	1	24
		481	Network Systems Administration	7	6	0.10	1.05	32	315	1	24
		482	Introduction to Routers	12	7	0.10	1.80	54	540	1	25
		483	Network Switches-Concepts/Apps	4	4	0.10	0.60	18	180	1	40
		484	Adv. Routing Concepts & Apps	5	4	0.10	0.83	25	250	1	24
		486	Network Security	6	6	0.10	0.84	25	252	1	24
Spring 2011	COMP	155	Computer Program VISUAL BASIC	21	18	0.20	3.15	95	473	1	30
		412	Flash I	10	5	0.05	0.86	26	516	1	35
		413	Flash II	10	4	0.05	0.84	25	506	1	35
		451	PC Configuration & Repair	7	4	0.23	2.15	64	276	1	24
		481	Network Systems Administration	8	5	0.10	1.12	34	336	1	24
		482	Introduction to Routers	10	7	0.10	1.40	42	420	1	25
		483	Network Switches-Concepts/Apps	5	5	0.10	0.70	21	210	1	40
		484	Adv. Routing Concepts & Apps	3	2	0.10	0.42	13	126	1	24