

## CAOT Department Student Characteristics 2006/07 through 2010/11

### Unique Headcount by Term

FA06	FA07	FA08	FA09	FA10	SP07	SP08	SP09	SP10	SP11	SU06	SU07	SU08	SU09	SU10
583	574	688	698	729	560	608	735	675	677	310	220	245	354	318

### Unique Headcount by Gender

	2006/07		2007/08		2008/09		2009/10		2010/11		Change 09/10-10/11	5 Year Row Total & Average	
Female	742	61%	755	61%	849	59%	884	59%	870	59%	-2%	4,100	59%
Male	429	37%	407	36%	498	37%	527	38%	533	39%	1%	2,394	37%
Unreported	21	2%	31	3%	47	4%	48	3%	39	3%	-19%	186	3%
<b>Column Total</b>	<b>1,192</b>	<b>100%</b>	<b>1,193</b>	<b>100%</b>	<b>1,394</b>	<b>100%</b>	<b>1,459</b>	<b>100%</b>	<b>1,442</b>	<b>100%</b>	<b>-1%</b>	<b>6,680</b>	<b>100%</b>

### Unique Headcount by Ethnicity

	2006/07		2007/08		2008/09		2009/10		2010/11		Change 09/10-10/11	5 Year Row Total & Average	
African American	49	4%	47	4%	69	5%	78	6%	72	6%	-8%	315	5%
Asian	292	27%	285	25%	309	24%	335	25%	323	24%	-4%	1,544	25%
Filipino	168	14%	177	16%	206	14%	221	16%	248	17%	12%	1,020	16%
Hispanic	236	20%	241	20%	278	19%	271	17%	260	17%	-4%	1,286	18%
White	316	23%	311	23%	354	22%	344	21%	316	20%	-8%	1,641	22%
Other	45	4%	21	1%	8	1%	6	0%	4	0%	-33%	84	1%
Unknown	86	8%	115	10%	170	14%	205	14%	219	15%	7%	795	13%
<b>Column Total</b>	<b>1,192</b>	<b>100%</b>	<b>1,197</b>	<b>100%</b>	<b>1,394</b>	<b>100%</b>	<b>1,460</b>	<b>100%</b>	<b>1,442</b>	<b>100%</b>	<b>-1%</b>	<b>6,685</b>	<b>100%</b>

### Unique Headcount by Age

	2006/07		2007/08		2008/09		2009/10		2010/11		Change 09/10-10/11	5 Year Row Total & Average	
Under 18	21	2%	25	3%	31	3%	50	4%	39	3%	-22%	166	3%
Age 18-22	303	29%	300	29%	379	33%	393	33%	412	36%	5%	1,787	33%
Age 23-28	268	26%	288	25%	314	24%	349	23%	359	24%	3%	1,578	24%
Age 29-39	237	20%	252	20%	324	23%	305	20%	294	19%	-4%	1,412	20%
Age 40-49	185	12%	161	12%	186	10%	176	10%	193	11%	10%	901	11%
Age 50-59	137	9%	120	8%	140	6%	159	8%	126	6%	-21%	682	7%
Age 60+	52	3%	57	4%	35	1%	42	2%	33	1%	-21%	219	2%
<b>Column Total</b>	<b>1,203</b>	<b>100%</b>	<b>1,203</b>	<b>100%</b>	<b>1,409</b>	<b>100%</b>	<b>1,474</b>	<b>100%</b>	<b>1,456</b>	<b>100%</b>	<b>-1%</b>	<b>6,745</b>	<b>100%</b>

Source: SMCCCD Data Warehouse

\*Note: Counts and percents are based on census figures.

\*\*Note: The variations in total numbers each year within the demographic segments are due to missing data points, and, in the case of age, also due to students crossing a category threshold during a year (18-22 in Fall, 23-28 in Spring).

### Unique Headcount by Status

	2006/07		2007/08		2008/09		2009/10		2010/11		Change 09/10-10/11	5 Year Row Total & Average	
Continuing	688	59%	647	51%	811	57%	885	62%	923	65%	4%	3,954	60%
Currently K-12	22	2%	22	3%	30	3%	44	4%	31	3%	-30%	149	3%
First-Time	94	9%	84	11%	109	11%	67	6%	99	8%	48%	453	9%
First-Time Transfer	113	11%	156	20%	150	15%	183	16%	148	12%	-19%	750	15%
Returning	188	11%	176	9%	212	9%	202	9%	178	8%	-12%	956	9%
Returning Transfer	132	7%	163	7%	155	5%	141	4%	123	5%	-13%	714	5%
<b>Column Total</b>	<b>1,237</b>	<b>100%</b>	<b>1,248</b>	<b>100%</b>	<b>1,467</b>	<b>100%</b>	<b>1,522</b>	<b>100%</b>	<b>1,502</b>	<b>100%</b>	<b>-1%</b>	<b>6,976</b>	<b>100%</b>

### Unique Headcount by Course-Taking Pattern (Fall and Spring only)

	2006/07		2007/08		2008/09		2009/10		2010/11		Change 09/10-10/11	5 Year Row Total & Average	
Day	617	48%	602	48%	662	44%	688	44%	446	30%	-35%	3,015	42%
Day and Evening	159	13%	179	14%	263	17%	211	13%	138	8%	-35%	950	13%
Evening	534	39%	519	37%	623	38%	726	43%	978	62%	35%	3,380	46%
<b>Column Total</b>	<b>1,310</b>	<b>100%</b>	<b>1,300</b>	<b>100%</b>	<b>1,548</b>	<b>100%</b>	<b>1,625</b>	<b>100%</b>	<b>1,562</b>	<b>100%</b>	<b>-4%</b>	<b>7,345</b>	<b>100%</b>

### Unique Headcount by Educational Goal

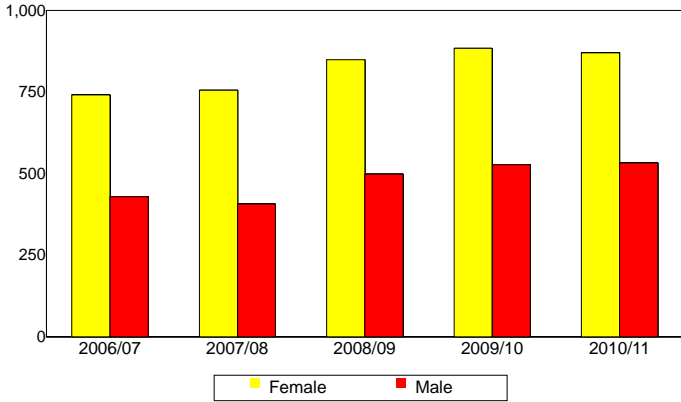
	2006/07		2007/08		2008/09		2009/10		2010/11		Change 09/10-10/11	5 Year Row Total & Average	
Transfer	579	51%	378	31%	462	34%	491	35%	523	39%	7%	2,433	37%
AA/AS w/o Transfer	79	6%	83	6%	102	8%	116	8%	128	8%	10%	508	8%
Certificate w/o Transfer	31	3%	49	5%	68	4%	74	4%	66	4%	-11%	288	4%
Acquire/Update Job Skills	253	18%	197	16%	249	15%	262	15%	234	15%	-11%	1,195	15%
Complete HS Credits	6	1%	20	2%	26	3%	28	2%	22	2%	-21%	102	2%
Educational Development	138	10%	135	11%	114	7%	107	7%	110	7%	3%	504	8%
Formulate Career Plans/G	5	1%	14	1%	36	3%	32	2%	27	2%	-16%	114	2%
Improve Basic Skills	12	1%	49	4%	65	4%	70	5%	58	3%	-17%	254	4%
Maintain Certificate/Licens	5	0%	14	1%	24	2%	22	2%	27	2%	23%	92	1%
Undecided/Unreported	116	10%	281	23%	271	20%	273	19%	278	18%	2%	1,219	19%
<b>Column Total</b>	<b>1,224</b>	<b>100%</b>	<b>1,220</b>	<b>100%</b>	<b>1,417</b>	<b>100%</b>	<b>1,475</b>	<b>100%</b>	<b>1,473</b>	<b>100%</b>	<b>-0%</b>	<b>5,809</b>	<b>100%</b>

Source: SMCCCD Data Warehouse

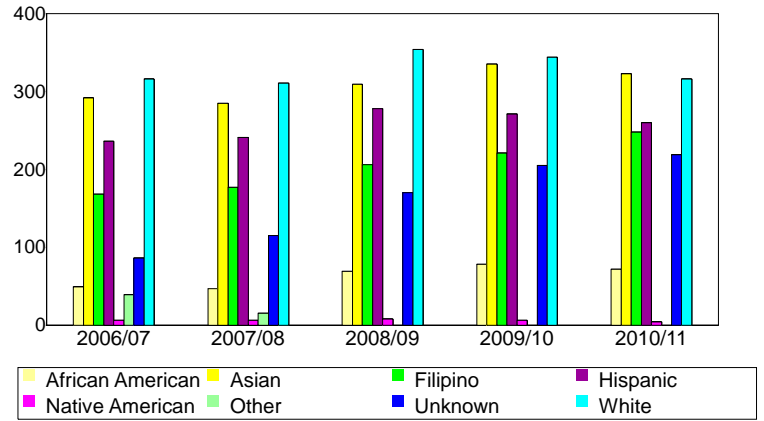
\*Note: Counts and percents are based on census figures for summer, fall and spring.

\*\*Note: The variations in total numbers each year within the Status, Course-Taking, and Educational Goal tables are due to missing data points and also due to students changing Status, Pattern, or Educational Goal within a given year - e.g. "First Time Student" in Fall and "Continuing Student" in Spring.

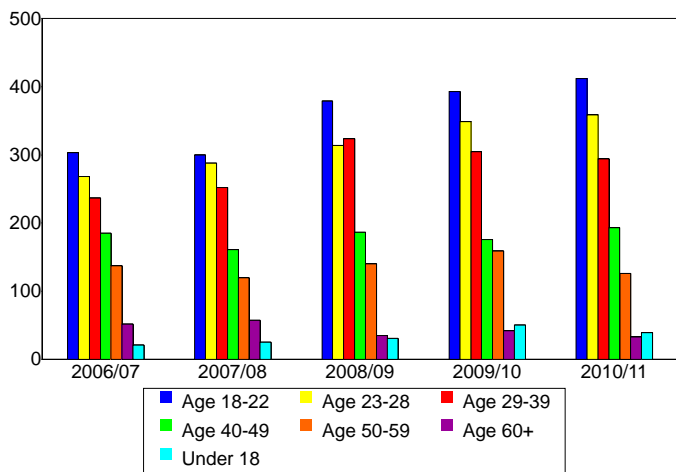
**Unique Headcount by Gender**



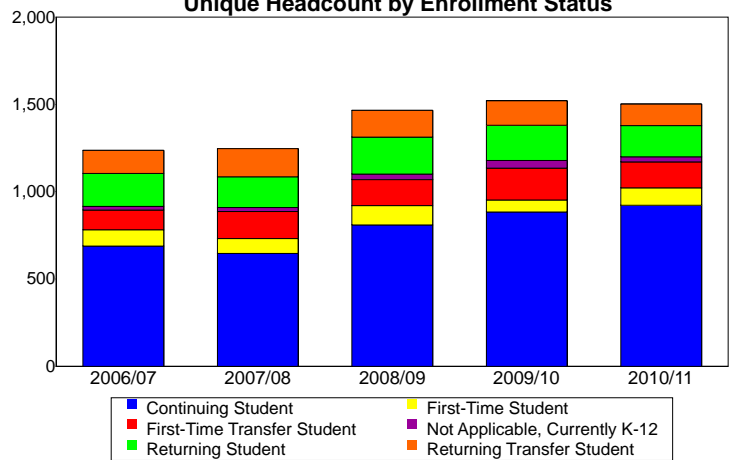
**Unique Headcount by Ethnicity**



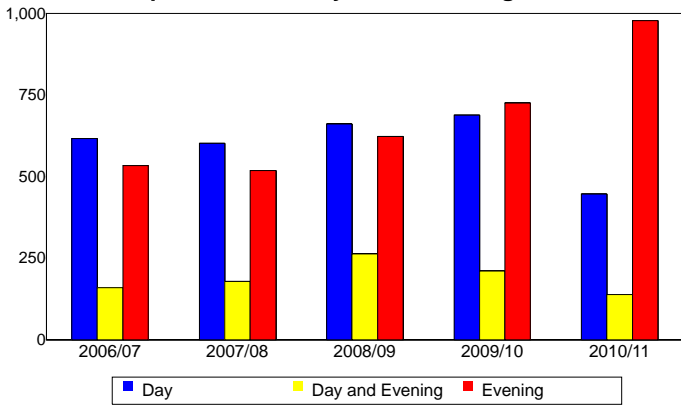
**Unique Headcount by Student Age**



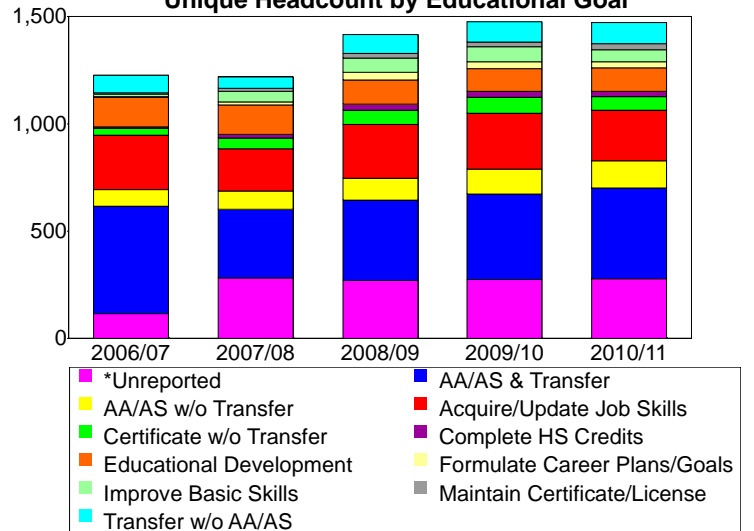
**Unique Headcount by Enrollment Status**



**Unique Headcount by Course-Taking Pattern**



**Unique Headcount by Educational Goal**



Source: SMCCCD Data Warehouse