

## Business Department Student Characteristics 2006/07 through 2010/11

### Unique Headcount by Term

FA06	FA07	FA08	FA09	FA10	SP07	SP08	SP09	SP10	SP11	SU06	SU07	SU08	SU09	SU10
598	611	639	748	734	565	688	724	781	780	184	401	238	309	260

### Unique Headcount by Gender

	2006/07		2007/08		2008/09		2009/10		2010/11		Change 09/10-10/11	5 Year Row Total & Average	
Female	558	47%	729	46%	710	49%	803	50%	818	52%	2%	3,618	49%
Male	575	50%	725	50%	628	48%	691	47%	688	46%	-0%	3,307	48%
Unreported	32	2%	46	4%	36	3%	44	3%	34	2%	-23%	192	3%
<b>Column Total</b>	<b>1,165</b>	<b>100%</b>	<b>1,500</b>	<b>100%</b>	<b>1,374</b>	<b>100%</b>	<b>1,538</b>	<b>100%</b>	<b>1,540</b>	<b>100%</b>	<b>0%</b>	<b>7,117</b>	<b>100%</b>

### Unique Headcount by Ethnicity

	2006/07		2007/08		2008/09		2009/10		2010/11		Change 09/10-10/11	5 Year Row Total & Average	
African American	38	3%	60	4%	53	5%	69	5%	90	6%	30%	310	5%
Asian	418	38%	418	29%	419	31%	417	28%	415	28%	-0%	2,087	30%
Filipino	174	14%	235	15%	243	16%	262	17%	241	16%	-8%	1,155	16%
Hispanic	185	16%	234	15%	229	16%	232	14%	242	15%	4%	1,122	15%
White	221	19%	335	19%	276	19%	338	21%	335	21%	-1%	1,505	20%
Other	35	3%	32	2%	7	0%	7	0%	2	0%	-71%	83	1%
Unknown	94	8%	188	16%	147	13%	212	15%	215	15%	1%	856	14%
<b>Column Total</b>	<b>1,165</b>	<b>100%</b>	<b>1,502</b>	<b>100%</b>	<b>1,374</b>	<b>100%</b>	<b>1,537</b>	<b>100%</b>	<b>1,540</b>	<b>100%</b>	<b>0%</b>	<b>7,118</b>	<b>100%</b>

### Unique Headcount by Age

	2006/07		2007/08		2008/09		2009/10		2010/11		Change 09/10-10/11	5 Year Row Total & Average	
Under 18	24	2%	19	2%	27	3%	12	1%	16	1%	33%	98	2%
Age 18-22	583	51%	625	45%	569	47%	654	50%	636	50%	-3%	3,067	49%
Age 23-28	314	29%	375	26%	429	29%	437	26%	436	25%	-0%	1,991	27%
Age 29-39	163	12%	198	12%	212	15%	268	15%	261	15%	-3%	1,102	14%
Age 40-49	65	4%	91	5%	90	5%	110	5%	125	5%	14%	481	5%
Age 50-59	21	1%	76	4%	46	2%	68	3%	61	3%	-10%	272	3%
Age 60+	6	0%	128	7%	8	0%	11	1%	14	1%	27%	167	2%
<b>Column Total</b>	<b>1,176</b>	<b>100%</b>	<b>1,512</b>	<b>100%</b>	<b>1,381</b>	<b>100%</b>	<b>1,560</b>	<b>100%</b>	<b>1,549</b>	<b>100%</b>	<b>-1%</b>	<b>7,178</b>	<b>100%</b>

Source: SMCCCD Data Warehouse

\*Note: Counts and percents are based on census figures.

\*\*Note: The variations in total numbers each year within the demographic segments are due to missing data points, and, in the case of age, also due to students crossing a category threshold during a year (18-22 in Fall, 23-28 in Spring).

### Unique Headcount by Status

	2006/07		2007/08		2008/09		2009/10		2010/11		Change 09/10-10/11	5 Year Row Total & Average	
Continuing	787	69%	856	55%	930	66%	1,065	68%	1,097	71%	3%	4,735	66%
Currently K-12	9	1%	13	1%	16	2%	7	1%	10	1%	43%	55	1%
First-Time	71	6%	145	14%	70	7%	63	5%	63	5%	0%	412	7%
First-Time Transfer	102	10%	184	17%	159	15%	209	17%	179	13%	-14%	833	15%
Returning	127	9%	208	8%	144	7%	141	6%	140	7%	-1%	760	7%
Returning Transfer	96	6%	138	5%	103	4%	117	4%	112	4%	-4%	566	4%
<b>Column Total</b>	<b>1,192</b>	<b>100%</b>	<b>1,544</b>	<b>100%</b>	<b>1,422</b>	<b>100%</b>	<b>1,602</b>	<b>100%</b>	<b>1,601</b>	<b>100%</b>	<b>-0%</b>	<b>7,361</b>	<b>100%</b>

### Unique Headcount by Course-Taking Pattern (Fall and Spring only)

	2006/07		2007/08		2008/09		2009/10		2010/11		Change 09/10-10/11	5 Year Row Total & Average	
Day	467	38%	720	45%	486	36%	536	36%	468	32%	-13%	2,677	37%
Day and Evening	76	5%	80	5%	95	6%	87	5%	96	5%	10%	434	5%
Evening	695	57%	775	50%	895	58%	1,027	59%	1,056	63%	3%	4,448	58%
<b>Column Total</b>	<b>1,238</b>	<b>100%</b>	<b>1,575</b>	<b>100%</b>	<b>1,476</b>	<b>100%</b>	<b>1,650</b>	<b>100%</b>	<b>1,620</b>	<b>100%</b>	<b>-2%</b>	<b>7,559</b>	<b>100%</b>

### Unique Headcount by Educational Goal

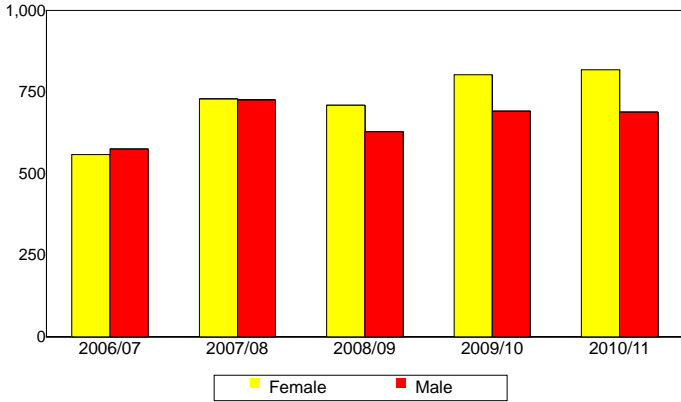
	2006/07		2007/08		2008/09		2009/10		2010/11		Change 09/10-10/11	5 Year Row Total & Average	
Transfer	838	72%	629	42%	649	47%	705	48%	762	52%	8%	3,583	51%
AA/AS w/o Transfer	45	3%	62	4%	67	5%	80	5%	100	6%	25%	354	5%
Certificate w/o Transfer	18	2%	35	3%	39	3%	61	4%	50	3%	-18%	203	3%
Acquire/Update Job Skills	77	6%	103	7%	134	9%	172	10%	168	10%	-2%	654	9%
Complete HS Credits	8	1%	12	1%	16	2%	7	1%	5	0%	-29%	48	1%
Educational Development	97	7%	244	13%	59	4%	68	4%	82	5%	21%	550	6%
Formulate Career Plans/Goals	1	0%	24	2%	14	1%	20	2%	23	2%	15%	82	1%
Improve Basic Skills	1	0%	18	1%	15	1%	23	1%	21	1%	-9%	78	1%
Maintain Certificate/Licensure	1	0%	8	1%	17	1%	16	1%	25	1%	56%	67	1%
Undecided/Unreported	90	9%	399	26%	380	27%	401	25%	319	20%	-20%	1,589	22%
<b>Column Total</b>	<b>1,176</b>	<b>100%</b>	<b>1,534</b>	<b>100%</b>	<b>1,390</b>	<b>100%</b>	<b>1,553</b>	<b>100%</b>	<b>1,555</b>	<b>100%</b>	<b>0%</b>	<b>7,208</b>	<b>100%</b>

Source: SMCCCD Data Warehouse

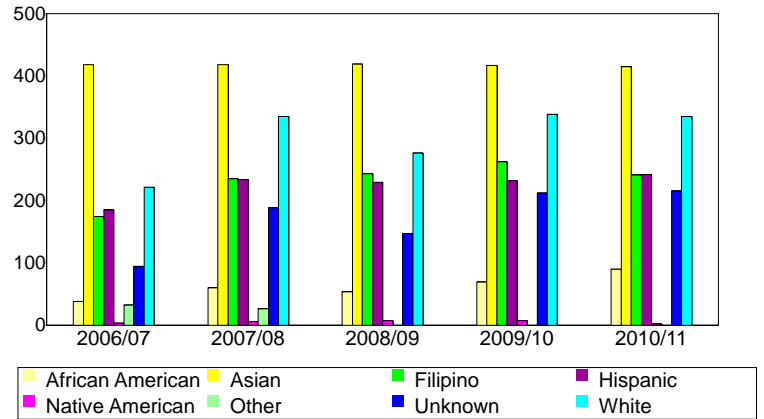
\*Note: Counts and percents are based on census figures for summer, fall and spring.

\*\*Note: The variations in total numbers each year within the Status, Course-Taking, and Educational Goal tables are due to missing data points and also due to students changing Status, Pattern, or Educational Goal within a given year - e.g. "First Time Student" in Fall and "Continuing Student" in Spring.

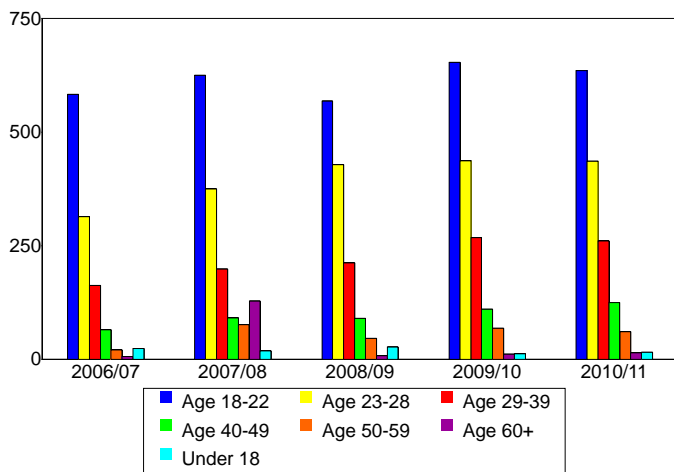
**Unique Headcount by Gender**



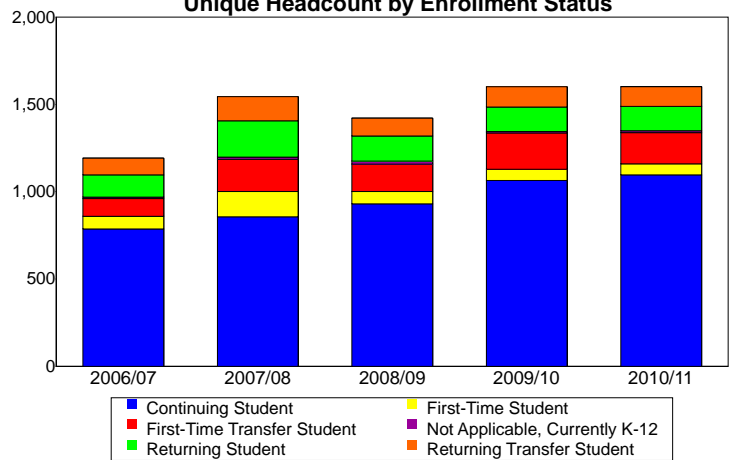
**Unique Headcount by Ethnicity**



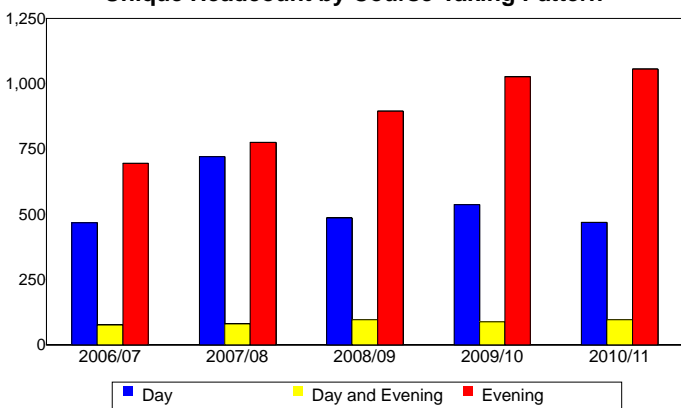
**Unique Headcount by Student Age**



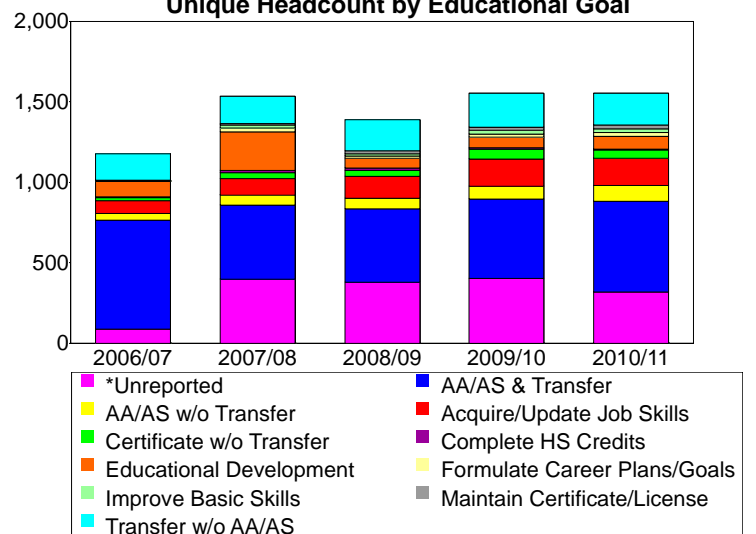
**Unique Headcount by Enrollment Status**



**Unique Headcount by Course-Taking Pattern**



**Unique Headcount by Educational Goal**



Source: SMCCCD Data Warehouse