

Anthropology Department Productivity: By Year and By Term 2006/07 through 2010/11

	Census Headcount	End of Term Headcount	FTEF	FTES	WSCH	Load	Sections	Max Enroll
2006/07	474	395	3.00	47.42	1,423	474	16	643
2007/08	453	339	2.80	45.96	1,379	492	14	607
2008/09	609	474	4.00	61.90	1,857	464	20	865
2009/10	618	506	3.00	63.33	1,900	633	15	670
2010/11	667	539	3.40	67.53	2,026	596	17	760

	Census Headcount	End of Term Headcount	FTEF	FTES	WSCH	Load	Sections	Max Enroll
Fall 2006	227	190	1.20	22.99	690	575	7	260
Fall 2007	193	137	1.20	19.53	586	488	6	247
Fall 2008	257	207	1.40	26.34	790	564	7	310
Fall 2009	294	241	1.40	30.45	914	653	7	310
Fall 2010	307	249	1.40	31.49	945	675	7	310
Spring 2007	171	133	1.20	17.10	513	428	6	248
Spring 2008	168	126	1.00	17.19	516	516	5	225
Spring 2009	245	184	1.80	25.10	753	418	9	375
Spring 2010	253	209	1.20	25.98	779	650	6	270
Spring 2011	284	224	1.60	28.65	859	537	8	360
Summer 2006	76	72	0.60	7.33	220	367	3	135
Summer 2007	92	76	0.60	9.24	277	462	3	135
Summer 2008	107	83	0.80	10.46	314	392	4	180
Summer 2009	71	56	0.40	6.90	207	518	2	90
Summer 2010	76	66	0.40	7.39	222	554	2	90

Source: SMCCCD Data Warehouse

Census Headcount: Number of duplicated headcount at final census.

End of Term Headcount: Number of duplicated headcount at the end of the term.

FTEF: Total number of full time equivalent faculty assigned.

FTES: Total number of full time equivalent students enrolled at first census.

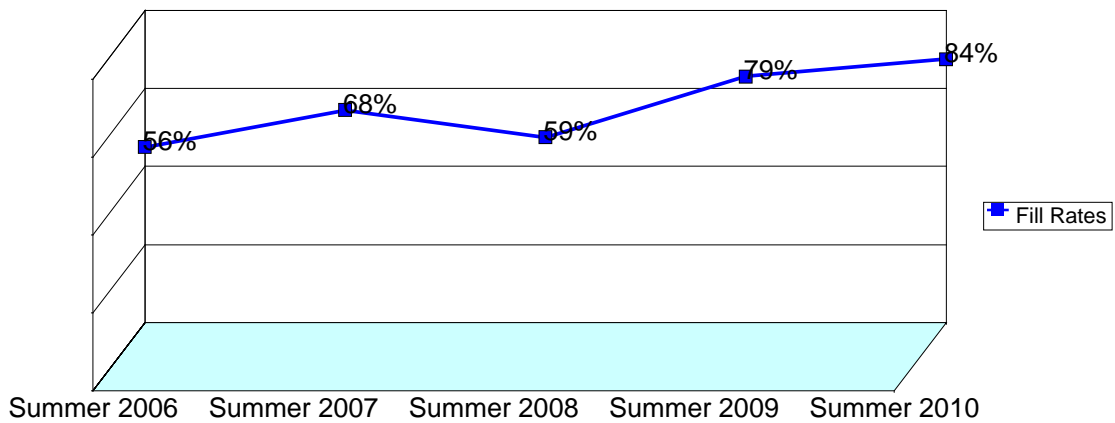
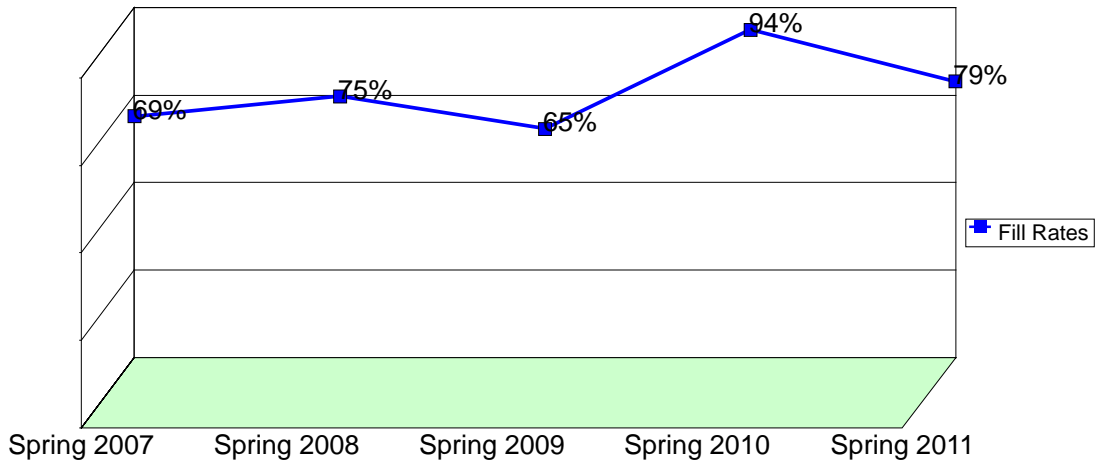
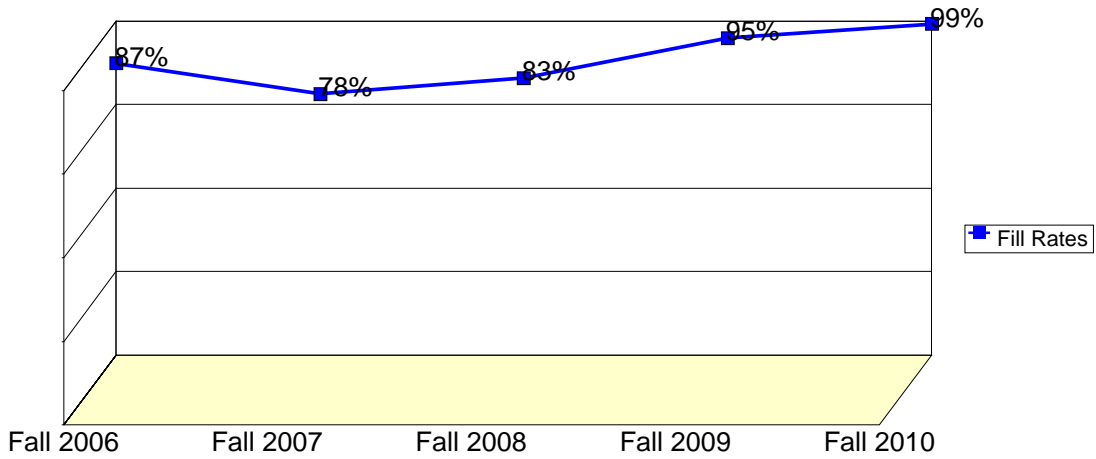
WSCH: Weekly student contact hours generated by census enrollments.

Load: The ratio of WSCH to FTEF, used to measure productivity.

Sections: Total number of sections offered per semester.

Max Enroll: The enrollment capacity or maximum enrollment as defined in curriculum.

Department Fill Rates by Term



Source: SMCCCD Data Warehouse

Fill Rates: The percent a class fills/enrolls based on capacity or enrollment maximum defined in the curriculum (does not include positive attendance or open entry/open exit classes).

Department Productivity: Term by Course

				Census Headcount	End of Term Headcount	FTEF	FTES	WSCH	Load	Sections	Max Enroll
Fall 2006	ANTH	110	Cultural Anthropology	114	100	0.60	11.69	351	585	3	135
		125	Physical Anthropology	29	25	0.10	2.90	87	870	1	35
			Physical Anthropology - Honors	6	5	0.10	0.60	18	180	1	35
		165	Cross Cultural Sex & Gender	36	29	0.20	3.60	108	540	1	45
		180	Magic, Science & Religion	42	31	0.20	4.20	126	630	1	45
Fall 2007	ANTH	110	Cultural Anthropology	66	51	0.40	6.83	205	512	2	90
			Cultural Anthropology-Honors	25	16	0.20	2.50	75	375	1	32
		125	Physical Anthropology	44	35	0.20	4.40	132	660	1	35
		165	Cross Cultural Sex & Gender	18	12	0.20	1.80	54	270	1	45
		180	Magic, Science & Religion	40	23	0.20	4.00	120	600	1	45
Fall 2008	ANTH	110	Cultural Anthropology	132	107	0.60	13.54	406	677	3	135
		125	Physical Anthropology	78	68	0.40	8.10	243	608	2	85
		165	Cross Cultural Sex & Gender	23	16	0.20	2.30	69	345	1	45
		180	Magic, Science & Religion	24	16	0.20	2.40	72	360	1	45
Fall 2009	ANTH	110	Cultural Anthropology	124	100	0.60	12.90	387	645	3	135
		125	Physical Anthropology	79	69	0.40	8.45	254	634	2	85
		165	Cross Cultural Sex & Gender	47	40	0.20	4.70	141	705	1	45
		180	Magic, Science & Religion	44	32	0.20	4.40	132	660	1	45
Fall 2010	ANTH	110	Cultural Anthropology	126	99	0.60	13.00	390	650	3	135
		125	Physical Anthropology	89	72	0.40	9.29	279	697	2	85
		165	Cross Cultural Sex & Gender	43	37	0.20	4.30	129	645	1	45
		180	Magic, Science & Religion	49	41	0.20	4.90	147	735	1	45
Spring 2007	ANTH	110	Cultural Anthropology	79	61	0.40	7.90	237	593	2	90
			Cultural Anthropology-Honors	16	14	0.20	1.60	48	240	1	28
		125	Physical Anthropology	45	37	0.20	4.50	135	675	1	40
		150	Introduction to Archaeology:	14	9	0.20	1.40	42	210	1	45
		360	Indians Of North America	17	12	0.20	1.70	51	255	1	45
Spring 2008	ANTH	110	Cultural Anthropology	71	52	0.40	7.10	213	533	2	90
		125	Physical Anthropology	82	61	0.40	8.59	258	644	2	90
		150	Introduction to Archaeology:	15	13	0.20	1.50	45	225	1	45
Spring 2009	ANTH	110	Cultural Anthropology	94	73	0.40	9.40	282	705	2	90
			Cultural Anthropology-Honors	7	4	0.20	0.70	21	105	1	30
		125	Physical Anthropology	68	51	0.40	7.25	218	544	2	90
			Physical Anthropology-Honors	14	10	0.20	1.40	42	210	1	30
		150	Introduction to Archaeology:	17	12	0.20	1.70	51	255	1	45
		360	Indians Of North America	23	15	0.20	2.30	69	345	1	45
		680	Anthropology of Death	22	19	0.20	2.35	70	352	1	45
Spring 2010	ANTH	110	Cultural Anthropology	117	97	0.60	11.70	351	585	3	135
		125	Physical Anthropology	91	76	0.40	9.48	284	711	2	90
		170	Anthropology of Death	45	36	0.20	4.80	144	720	1	45
Spring 2011	ANTH	110	Cultural Anthropology	122	103	0.60	12.20	366	610	3	135
		125	Physical Anthropology	78	56	0.40	7.80	234	585	2	90
		150	Introduction to Archaeology:	29	22	0.20	2.90	87	435	1	45
		170	Anthropology of Death	37	29	0.20	3.95	118	592	1	45
		360	Indians Of North America	18	14	0.20	1.80	54	270	1	45
Summer 2006	ANTH	110	Cultural Anthropology	59	56	0.40	5.73	172	430	2	90
		180	Magic, Witchcraft & Religion	17	16	0.20	1.60	48	240	1	45

				Census Headcount	End of Term Headcount	FTEF	FTES	WSCH	Load	Sections	Max Enroll
Summer 2007	ANTH	110	Cultural Anthropology	63	53	0.40	6.09	183	456	2	90
		125	Physical Anthropology	29	23	0.20	3.15	94	472	1	45
Summer 2008	ANTH	110	Cultural Anthropology	55	40	0.40	5.45	163	409	2	90
		125	Physical Anthropology	52	43	0.40	5.01	150	376	2	90
Summer 2009	ANTH	110	Cultural Anthropology	36	29	0.20	3.70	111	555	1	45
		125	Physical Anthropology	35	27	0.20	3.20	96	480	1	45
Summer 2010	ANTH	110	Cultural Anthropology	35	29	0.20	3.53	106	529	1	45
		125	Physical Anthropology	41	37	0.20	3.87	116	580	1	45